

Regional Municipality of Wood Buffalo

Post-Fire Wildfire Hazard Assessment

Prepared for:
Bob Couture, Director of Emergency Management



May 30, 2016

Stew Walkinshaw, R.P.F.

MONTANE
Forest Management Ltd.

Canmore, AB.

Phone: (403) 678-7054 Email: montane@shaw.ca

1 Overview

The goal of the Regional Municipality of Wood Buffalo Wildfire Hazard Assessment was to identify post-fire green islands within and adjacent to developed areas and identify wildfire threat to development from those green islands.

The project objectives include:

- Identify wildfire hazard and risk
- Determine mitigation priorities and options
- Implement activities to reduce threat in high hazard areas

2 Assumptions

The following assumptions were used.

- Fuel modification units are developed for Municipal and Provincial lands and do not impinge on deeded lands
- All wildland fuels, including coniferous, mixedwood, deciduous, grass and dead and down, present wildfire threat to development under Extreme hazard conditions
- A minimum of 30 metres clearance should be developed and maintained around developments to reduce the wildfire threat
- Trees in burned and under-burned areas will eventually die and blowdown creating additional fire hazard from significant dead and down accumulations

3 Priorities

The following communities are included in this report due to their proximity to the Horse River fire perimeter:

- Birchwood Trails/Conn Creek
- Anzac
- Thickwood-Water Treatment Plant Hill
- Confederation Way North
- Abasand Hillside
- Gregoire-Saline Creek
- Airport-Draper Road
- Parsons Creek
- Gregoire Lake Estates
- Saprae Creek
- Beacon Hill-Waterways

The following communities will be assessed at a later date:

- Fort McKay
- Fort Chipewyan
- Conklin
- South Janvier (Chard)

4 Wildfire Hazard Assessment Process

Wildfire hazard was assessed using:

- Post-fire ortho-imagery
- Helicopter flights to identify green islands near developments
- Field visits to verify information

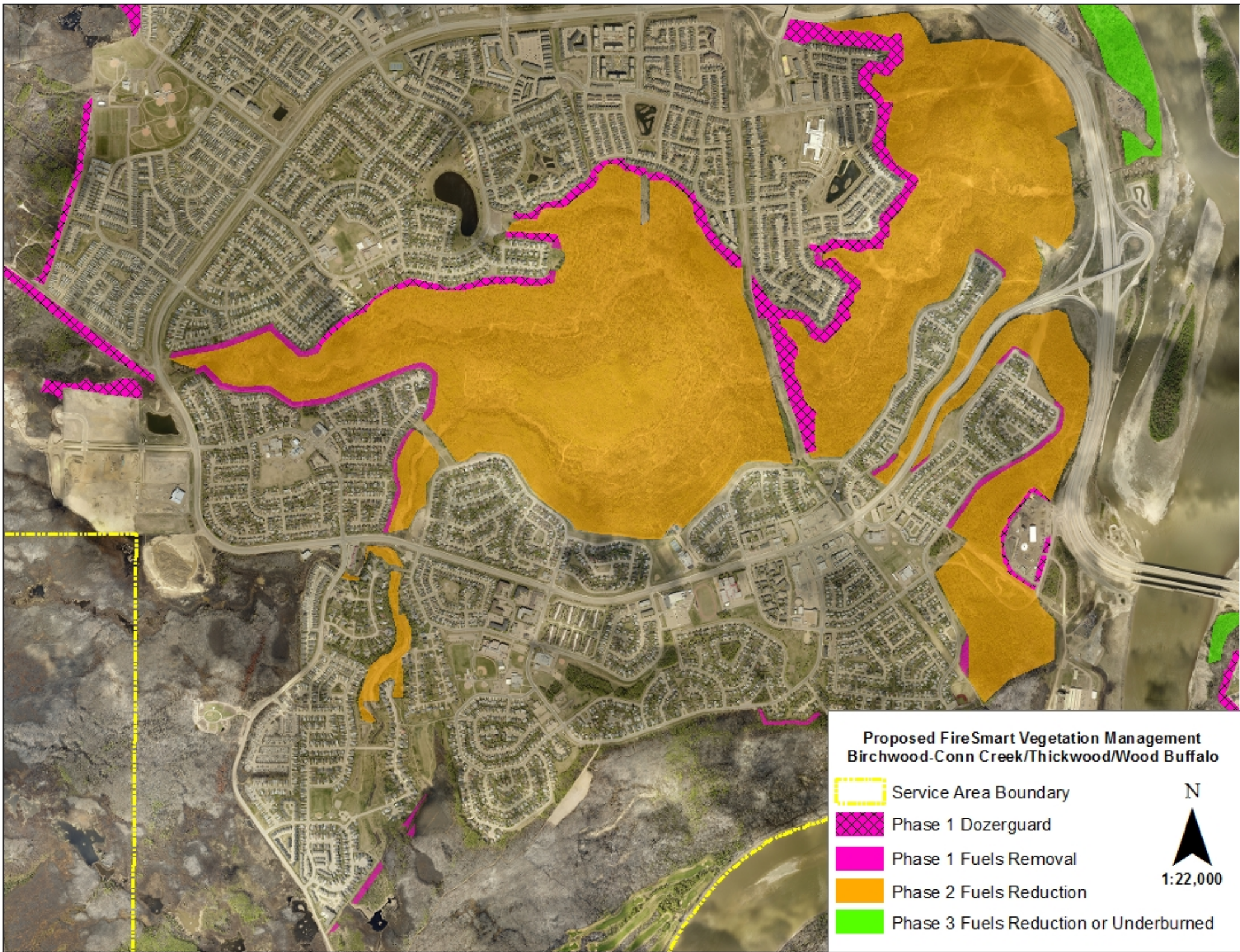
Maps are provided to identify hazard areas based on three phases listed below (see attached maps).

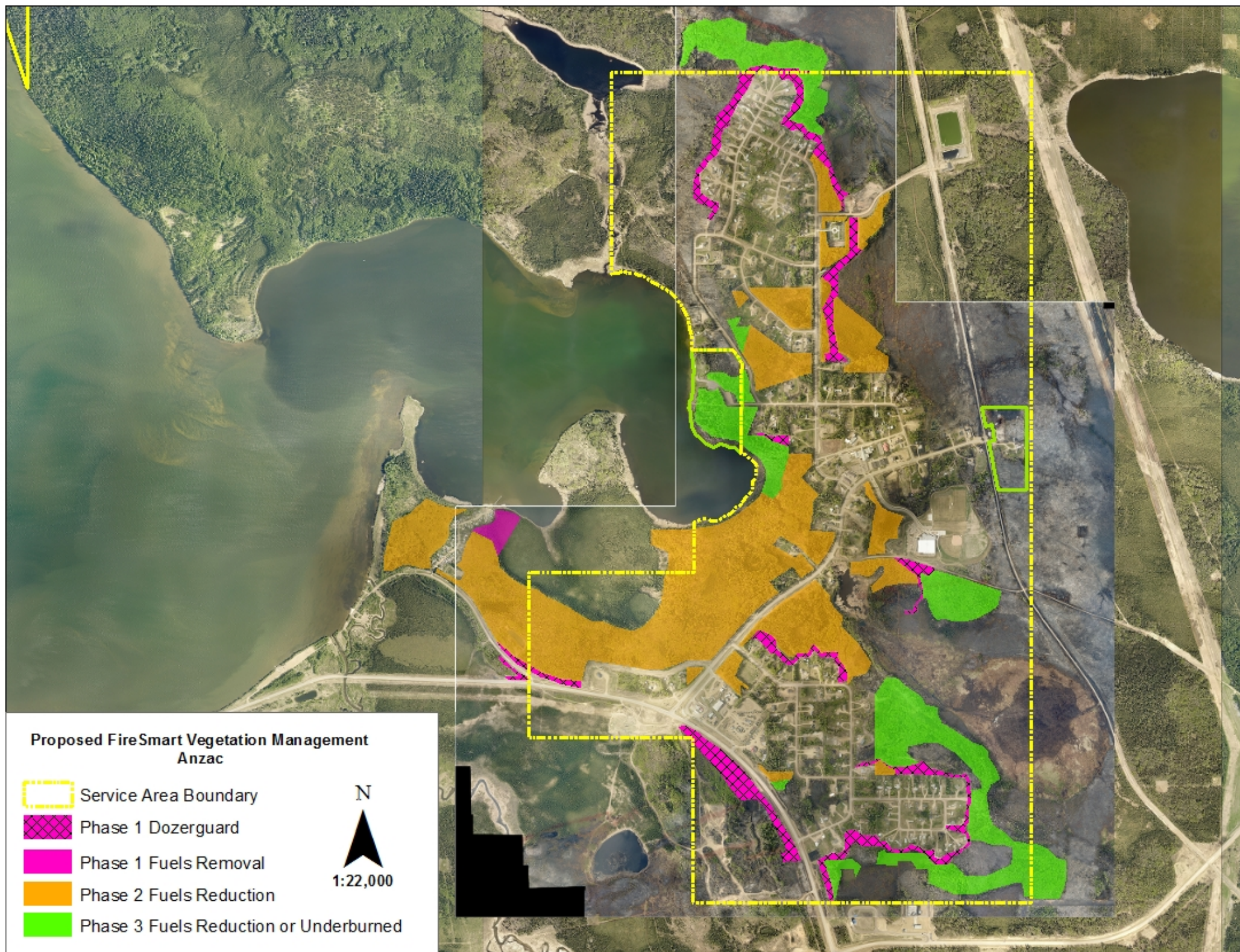
Phase	Description	Recommended Treatment
1	Areas of High-Extreme hazard immediately adjacent to developments	Fuel removal
2	Areas of Moderate-Extreme hazard in proximity of developed areas	Fuel reduction
3	Areas of Low-Moderate hazard in proximity of developed areas	Fuel reduction

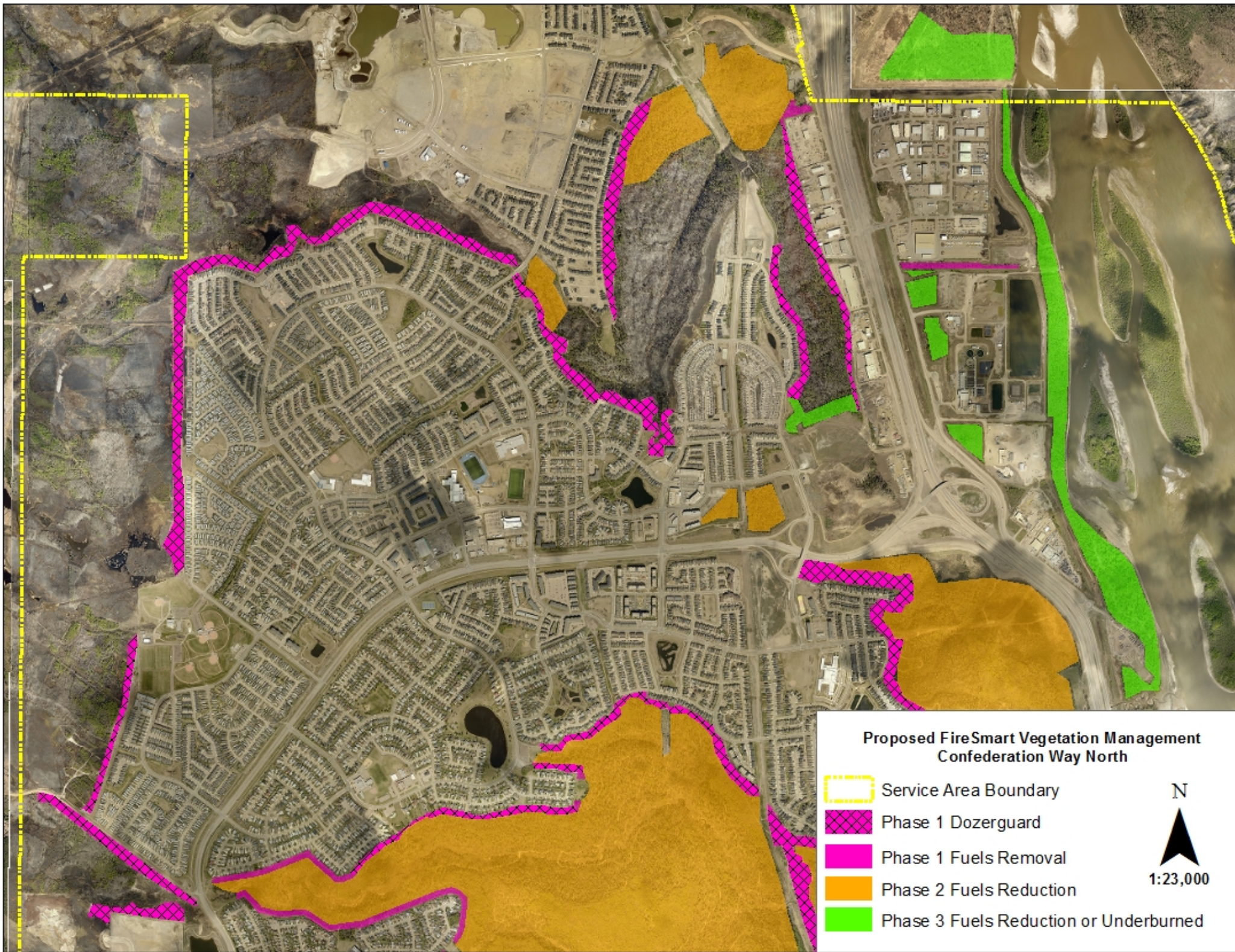
5 Hazard Reduction Implementation

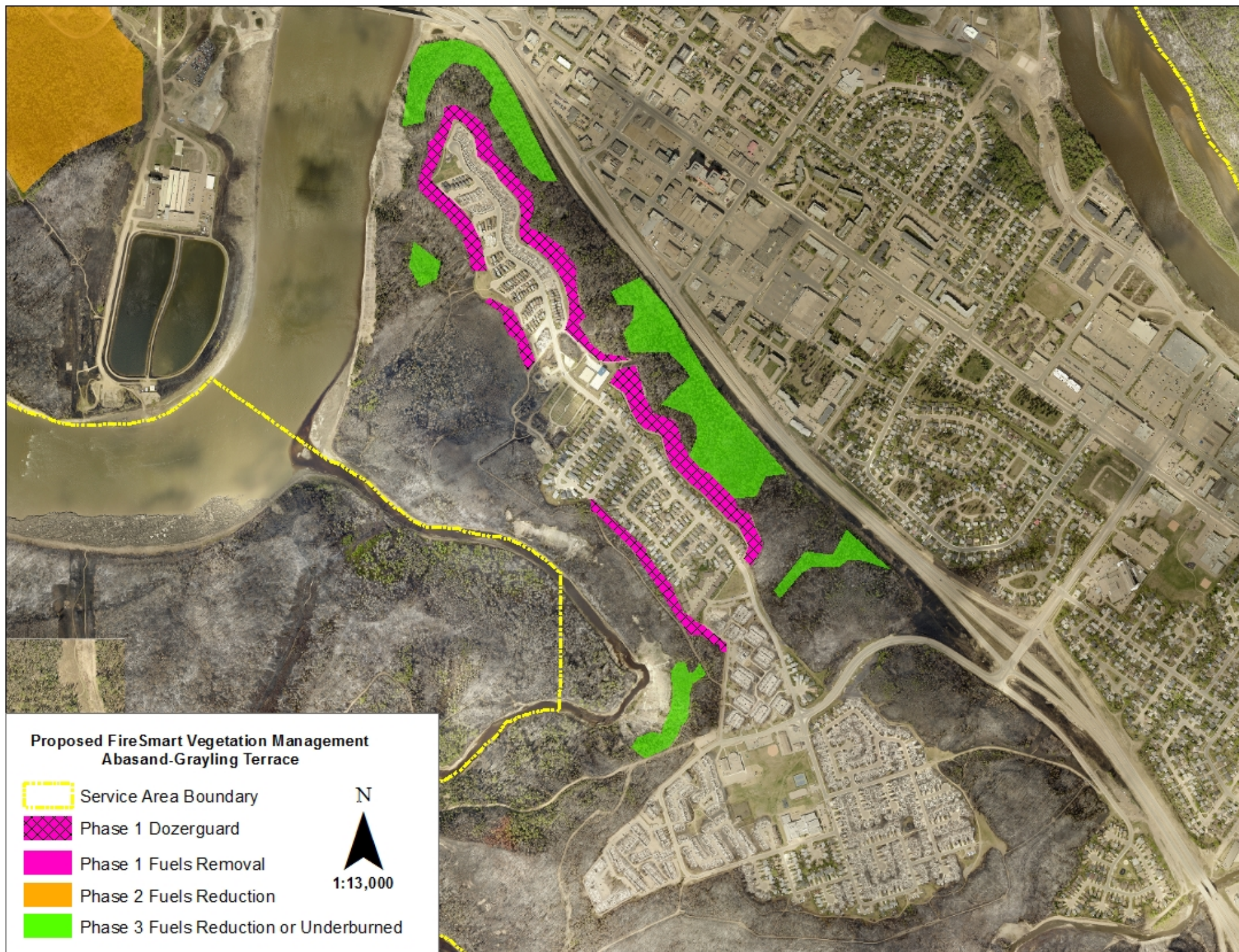
Blocks shown on the attached maps are conceptual only. Detailed field reconnaissance and prescriptions by a qualified FireSmart professional need to be conducted for each fuel modification unit prior to commencement and boundaries may change based on findings in during field reconnaissance.

- Implementation of Phase 1 fuel removal has begun in Birchwood Trails/Conn Creek and on the fireguards and will continue until completed
- Prescription development for the Phase 2 units will be conducted while Phase 1 implementation is occurring and implementation should commence as soon as possible
- Phase 3 units are of lower priority and can be implemented once Phase 2 is completed and/or once a better assessment of under-burn tree survival is conducted














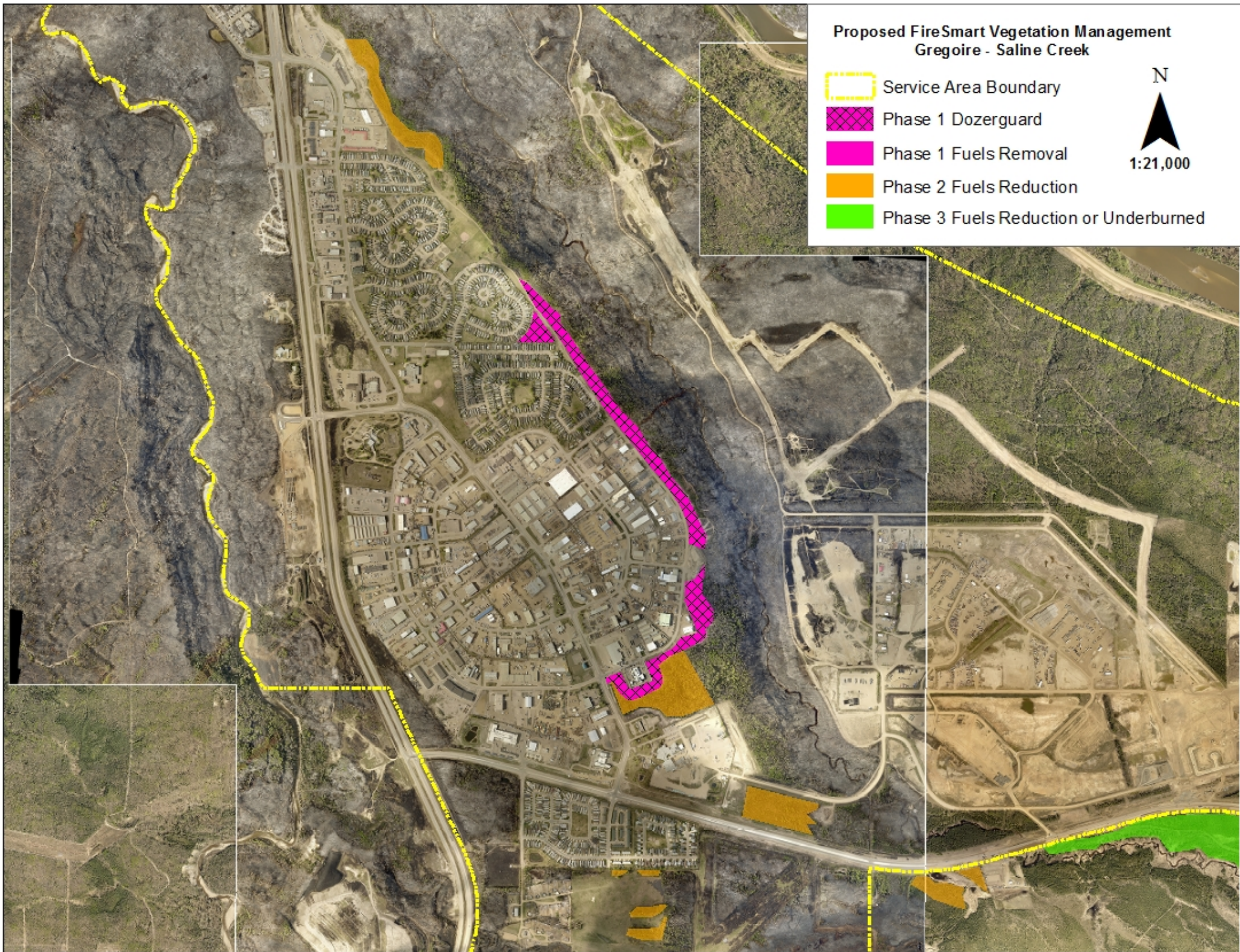
**Proposed FireSmart Vegetation Management
Gregoire - Saline Creek**

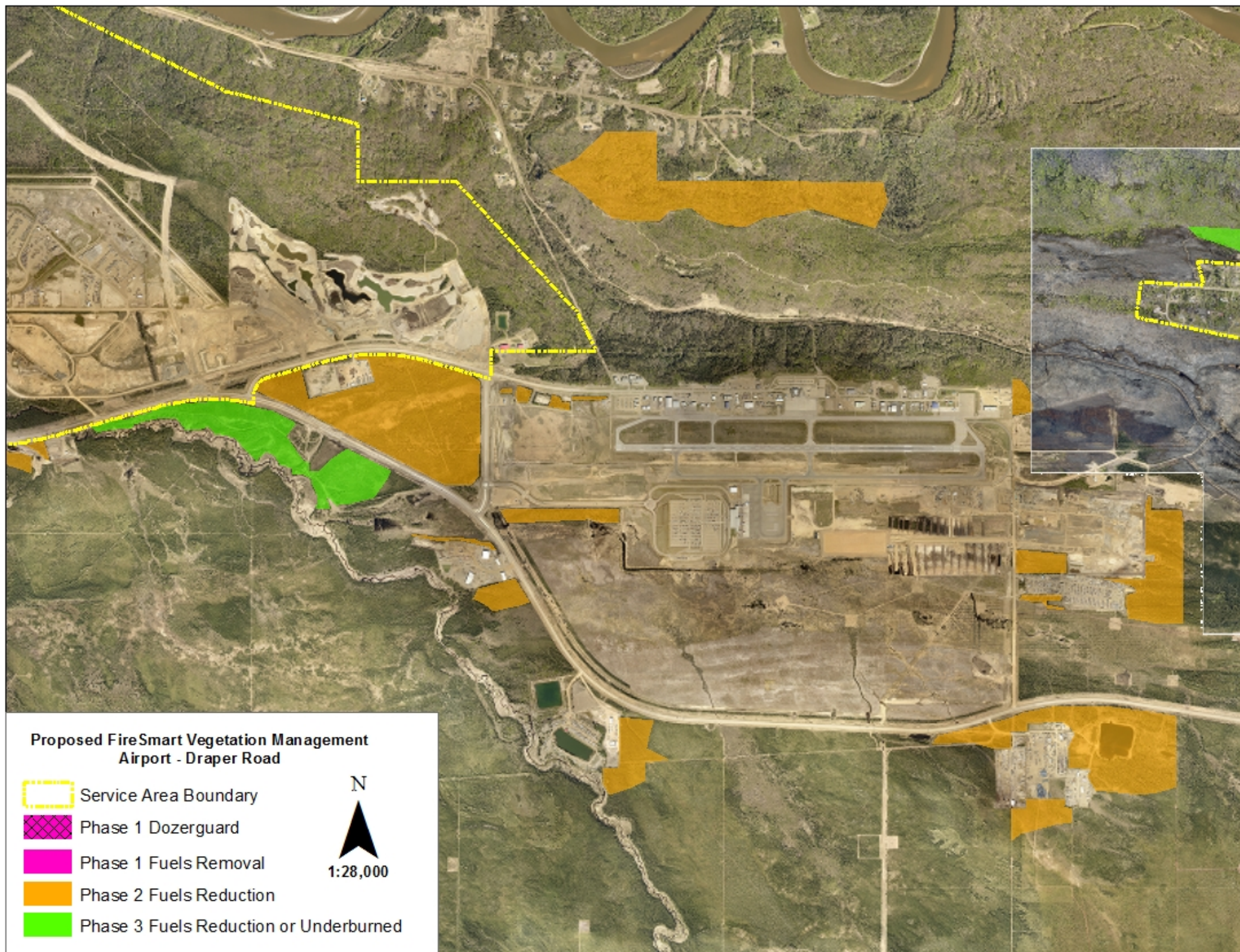
-  Service Area Boundary
-  Phase 1 Dozerguard
-  Phase 1 Fuels Removal
-  Phase 2 Fuels Reduction
-  Phase 3 Fuels Reduction or Underburned

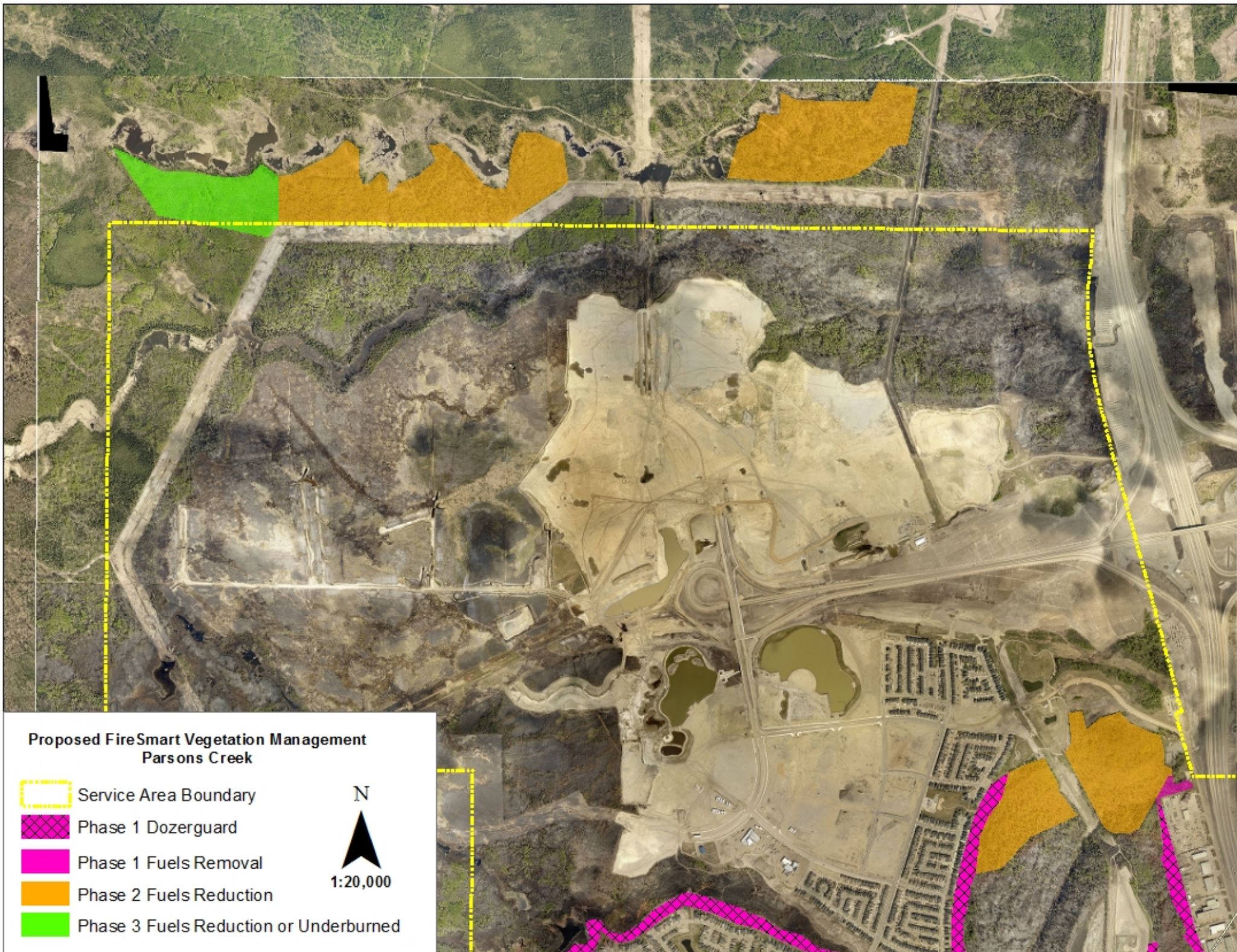
N

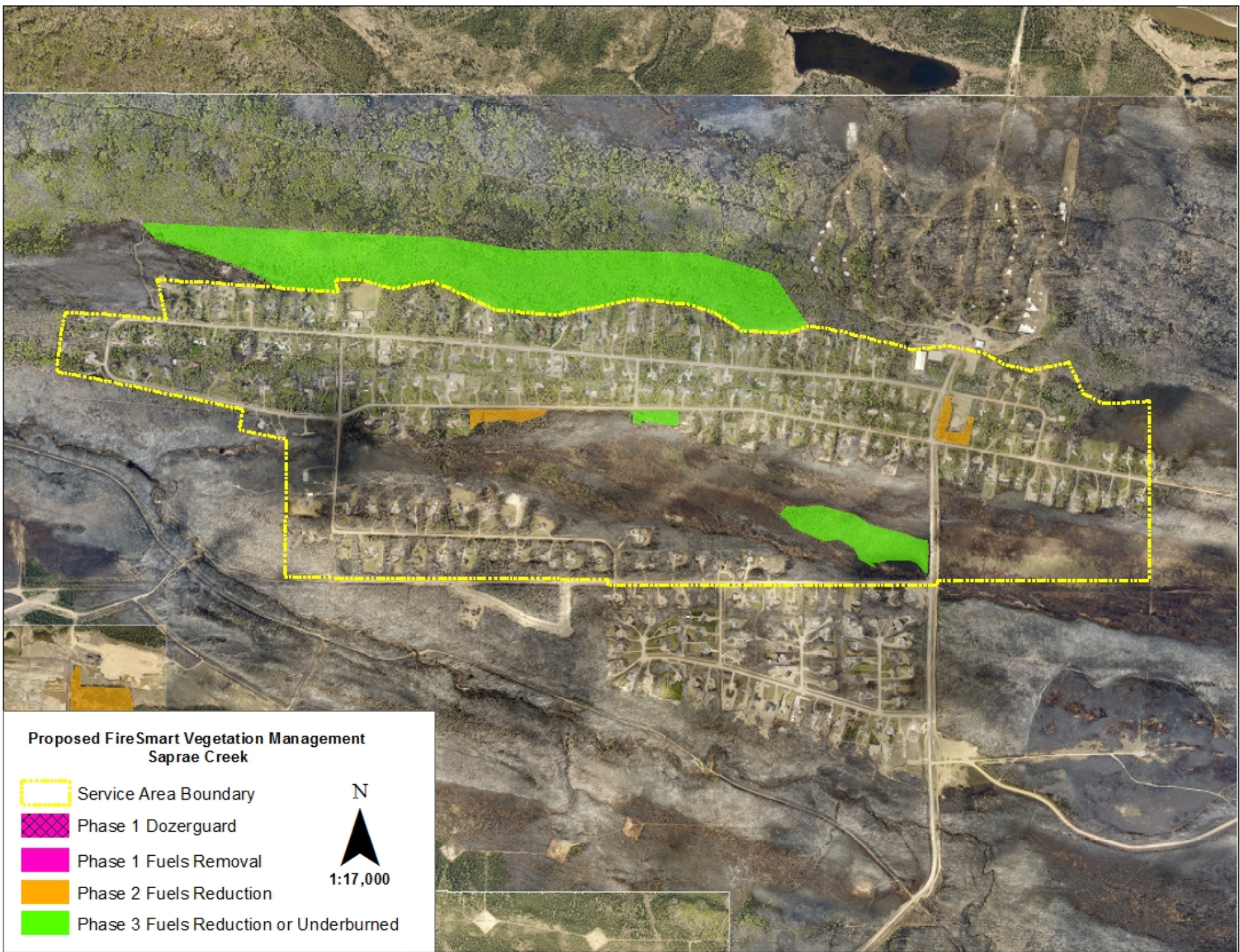


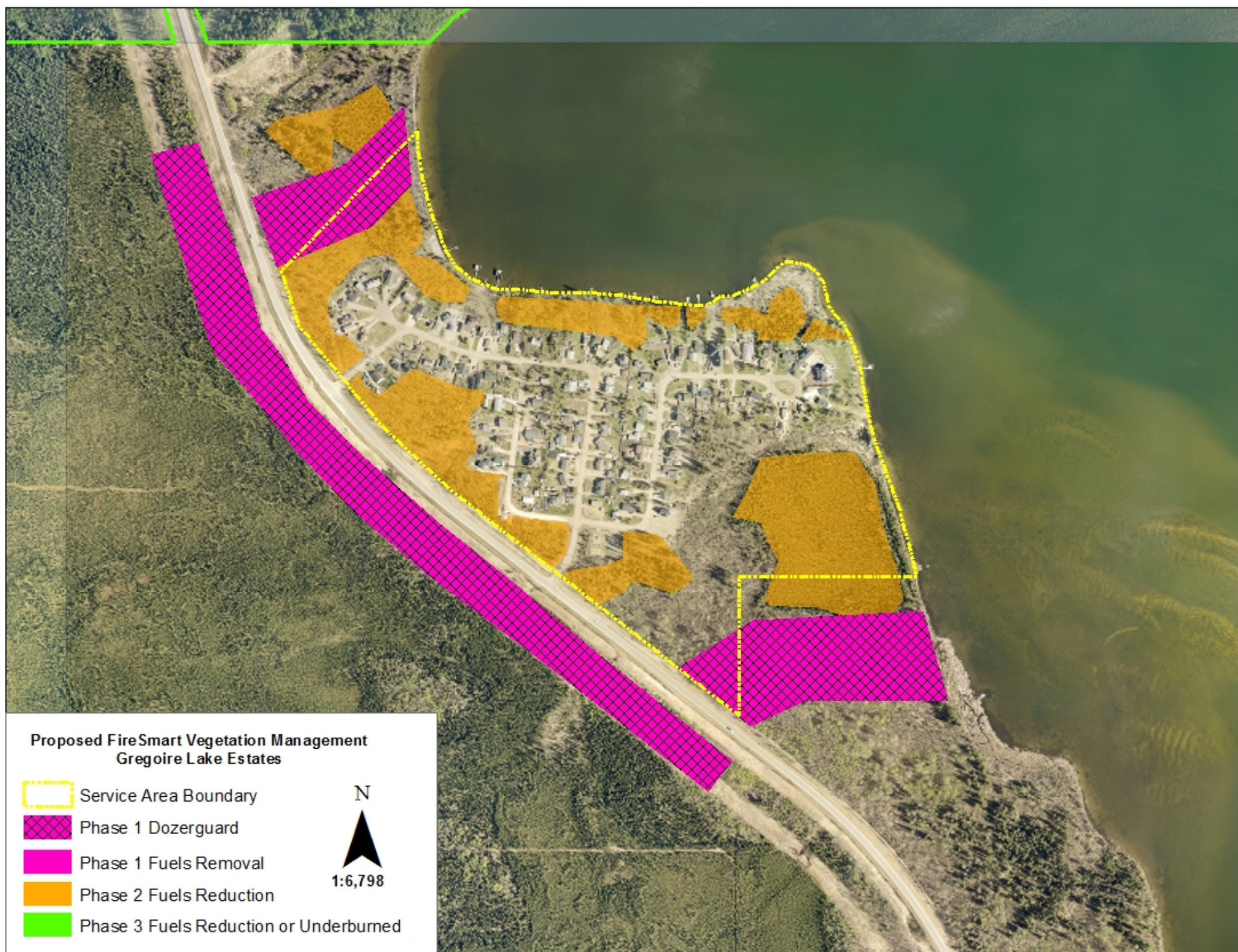
1:21,000
















**Proposed FireSmart Vegetation Management
Gregoire Lake Estates**

-  Service Area Boundary
 -  Phase 1 Dozerguard
 -  Phase 1 Fuels Removal
 -  Phase 2 Fuels Reduction
 -  Phase 3 Fuels Reduction or Underburned
- N
1:6,798

