

# 2016 Proposed Operating Budget

Office of the Chief Administrative Officer



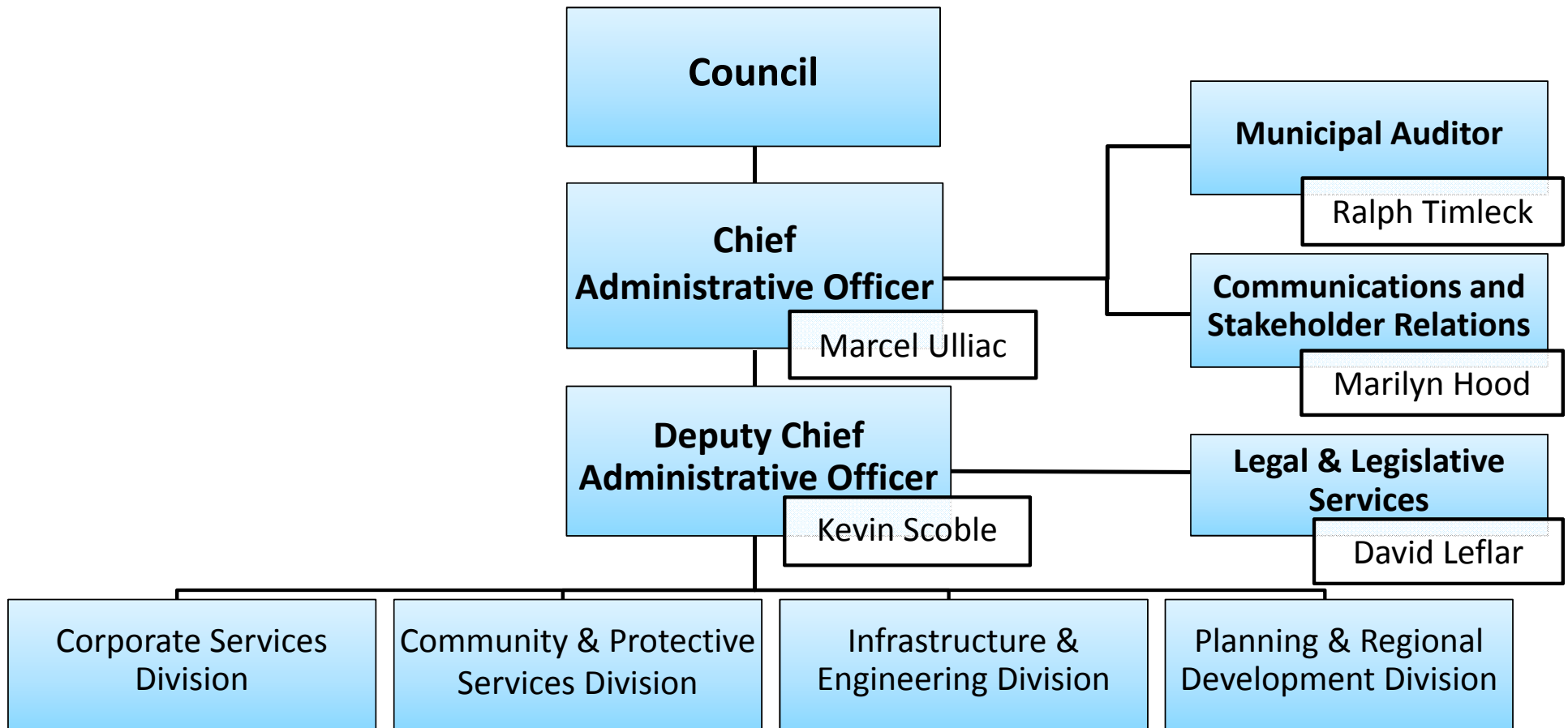
## **Mandate of the Chief Administrative Officer**

- The Chief Administrative Officer (CAO) is the administrative head of the municipality hired by Council. He is responsible for ensuring that the policies and programs of the municipality are implemented and advises and informs Council on the operation and affairs of the municipality. The CAO performs the duties and functions and exercises the powers assigned to him by the Municipal Government Act and other enactments or assigned by Council (CAO By-law).

## **Mandate of the Chief Administrative Officer, cont'd**

- The Office of the Chief Administrative Officer is supported by the Office of the Deputy CAO and is comprised of the following departments:
  - Communications and Stakeholders Relations
  - Municipal Auditor
  - Legislative and Legal Services

# Office of the Chief Administrative Office



# 2016 Proposed Operating Budget

- The Chief Administrative Office is aligned with all of the Strategic Plan Goals:
  - Responsible Government,
  - Balanced Regional Services,
  - Vibrant Economy,
  - Effective Land Strategy,
  - Reliable Transportation System,
  - Sustainable Region, and
  - Healthy and Active Lifestyle.

# 2016 Proposed Operating Budget

Offices of the Chief Administrative Officer & Deputy Chief Administrative Officer	2015 Amended Operating Budget	2015 Operating Projection*	2016 Proposed Operating Budget	Change 2015 Amended Budget vs 2016 Proposed Budget	
	\$	\$	\$	\$	%
<b>Revenue</b>	332,400	53,000	43,000	(289,400)	(87)
<b>Expenses</b>	20,093,400	17,456,756	19,807,300	(286,100)	(1)
<b>Surplus (Deficit)</b>	(19,761,000)	(17,403,756)	(19,764,300)	3,300	0
<b>Transfers to/from Reserve</b>		961,855	-	-	
<b>Net Surplus (Deficit)</b>	(19,761,000)	(16,441,900)	(19,764,300)	3,300	0

\*September 30, 2015

# 2016 Proposed Operating Budget

Offices of the Chief Administrative Officer & Deputy Chief Administrative Officer	2016 Proposed Operating Budget	2017 Financial Plan	2018 Financial Plan
	\$	\$	\$
<b>Revenue</b>	43,000	194,400	45,300
<b>Expenses</b>	19,807,300	20,462,500	20,236,600
<b>Surplus (Deficit)</b>	(19,764,300)	(20,268,100)	(20,191,300)
<b>Transfers to/from Reserve</b>	-	-	-
<b>Net Surplus (Deficit)</b>	(19,764,300)	(20,268,100)	(20,191,300)

# Questions?