

# Vista Ridge All Seasons Park



# Vista Ridge a History



- Operated by a Non Profit Society, built in 1996.
- 4 Board members and manager are original.
- Winter visits have tripled since opening.
- Record of innovation (Tubing, Bag Jump & WildPlay)
- Excellent programs and family facility.
- Record of fiscal responsibility.
- Developing summer products that target family fun.
- Exits to enhance the quality of life of residents.

# In House Capital Includes



- Handle lifts and Conveyors lifts at beginner area
- Tube Park 1999. RMWB lift upgrade in 2007
- Staff Houses, garages and warm-up huts at lift bases
- New Snow Groomers (2)
- New snowguns and pumps
- Lighting and revegetation programs
- Snowmobiles, quads, lawn mowers and rental equipment
- **Total internally funded capital close to \$4.0M**

# The Ski Industry in Canada



- Over 52% of the ski areas in Western Canada were not profitable in the 2013-14 season.
- Diversification has become the key to survival.
- Global warming is affecting coastal ski areas.
- Labor force and the TFW program are issues.
- Breeders, Feeders and Leaders.
- Of the 9 million ski visits in Western Canada in a season. Whistler accounts for 2 million.

# Capital 2009 -2015 RMWB



- 2009 - Lodge Expansion
- 2011 - Bison Expansion chairlift and snowmaking
- 2012 - Riblet Chairlift replacement
- 2013 - Adventure Park
- 2014 - New Conveyor Lift for Park
- 2014 - New maintenance garage
- 2015 - Activities (Frisbee Golf, Pump Track)
- 2106 - Golf course (12 Hole Executive)

# WildPlay Wood Buffalo



# WildPlay to Date



- Opened in September 2014
- Summer 2015 first full year of operation and is being very well received
- Addition of an additional demo course and an exit zip on level one 2015
- Addition of a climbing feature for guests who do not reach the height requirement for the course
- The addition of smart belay system has made the park safer and more accessible for younger guests.

# Additions to WildPlay Park

- New demo course to speed up throughput.



- Playscape for younger guests.

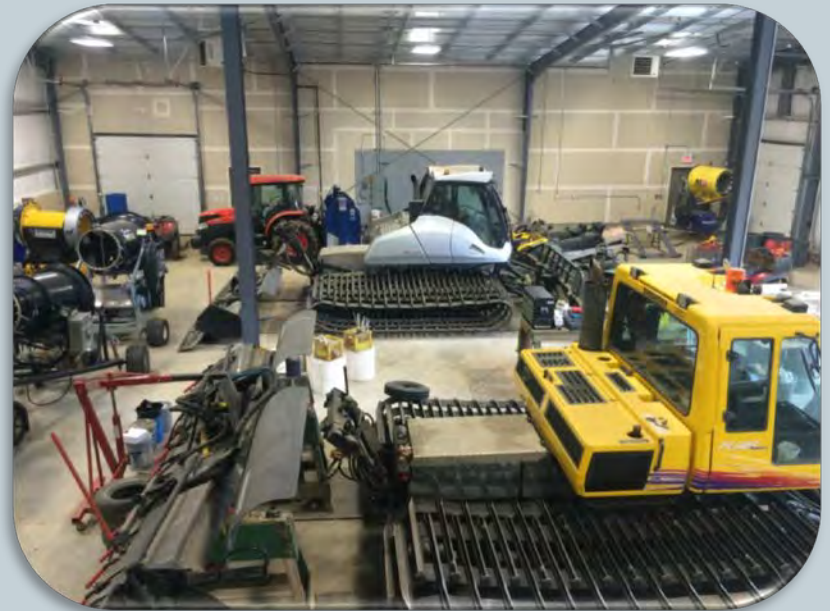


# RMWB Expansion Projects (2014-16)

- 6200 sq ft maintenance garage 2014-15.



- Housing summer and winter equipment.



# Conveyor lift (2014 Project)

- This area cleared for 2004 AWG Half Pipe.



- Grassing is vital to slope stability.



# Conveyor Lift Cont.

- New Park lift has been very well utilised



- One of a few public bag jumps in Canada.



# Forest Succession Plan for Stabilization



# Clearing and Removal of Trees

- Dead trees are identified and felled.



- Ground movement affect on river valleys.



# Slope Stabilization Program (2013-16)

- An area where infected trees have been felled.



- Hand planting is the only way to reclaim.



# Slope Stabilization Program Cont.

- New trees range in size from 1 to 3 ft.



- Area above the old half pipe replanted. (2015)



# Landscaping the Property

- Landscaping around the base area.



- Combination of natural and new plants.



# Additional Activities Commenced 2015

- Frisbee Golf easy family fun at no charge.



- Pump Track on Skate Park



# Golf Course Notes



- Goal is to provide a \$35 round, played in 2.5 hours.
- Course targeting family, beginner and social golfers.
- Support the other golf clubs by providing an avenue for beginners and families.
- Construction delayed due to the Crown Land Rec Lease process. (commenced in Feb 2014)
- Final design is complete and Northland Forest Products are compiling a Green Plan.
- Geo tech, historical artifact sweep and First Nations Consultation are complete.

# Golf Course Layout



# Golf Course Features and Schedule



- Public consultation and Development Permit process
- Modification of existing water diversion licence
- Water range also acts as a reservoir. (2<sup>nd</sup> reservoir)
- Trees cleared winter 2015-16
- Construction summer 2016
- Grow-in summer 2017 and possible soft opening
- Full year round operation at Vista Ridge 2018

# Highlights Proposed Capital 2016



- Final landscaping and paving base area
- Snowmaking upgrades
- Slope Stability program
- Development of other summer activities
- Golf Course
- **Total 2016 Capital Request \$1,150,000**

# Future Projects



- Alternative Activities to come include
  - Mini Putt (summer 2016)
  - Mountain Bike trails
  - Biking skills courses
  - Summer tubing or carting
  - Snow shoeing and cross country on golf course
  - Day camp sites for RMWB residents
  - Possible water based activities.

# 2017 Anticipated Capital Projects



- We assume some golf costs owing to the increase in construction caused by the land delays.
- Continuation of the alternative activities program
- Construction of an admin and staff social center building, as space in main lodge becomes restricted
- On site sewer (depends on the Saprae Creek Sewer Program progress)
- Lodge upgrades after 8 years.

# Vista Ridge in the Future



- A safe, affordable year round family adventure center (VALUE = EXPERIENCE - COST)
- A stable workforce of year round employees and a number of seasonal staff
- A balance of revenue generating activities and other family fun activities that may not create revenue
- A totally self-sufficient operation (current annual subsidy \$185,000)
- A world class family recreation center worthy of its place in the Wood Buffalo's recreation scene