

Urban Snow and Ice Control Program Update

Presenter: Keith Smith, Director

Department: Public Works

Meeting Date: February 9, 2021

The Policy

- Establishes winter snow and ice control standards for urban roads and sidewalks.
- Policy defines:
 - Primaries, Secondaries and Tertiaries (roadways)
 - Winter Maintenance Zones (residential)
 - Responsibilities of Municipality and Residents
 - Service Level Guidelines
 - Sidewalk Snow Plowing

History of Winter Maintenance Programs

- **Prior to 2014** – Hauled once a year. Huge ruts created by freeze/thaw.
- **2014** – Pilot program was launched and pushed snow on to lawns.
- **2015/2016** – New Winter Maintenance Zone program implemented.
Council Policy and Administrative Directive approved.
- **2016/2017** – Program continued without changes.
- **2017/2018** – Introduced Subzones.
- **2018/2019** – Activation triggers were revised (5 cm).
- **2020/2021** – Introduction of driveway windrow removal and alternating Subzones.

Winter Maintenance Zones & Subzones

- All residential neighborhoods have been divided into five Winter Maintenance Zones (WMZ), one for each weekday. Signs posted on residential streets have the day of the week when winter maintenance may occur on that street.
- Each Winter Maintenance Zone is broken down further into four Subzones WMZ-1, WMZ-2, WMZ-3, and WMZ-4. Residents must know their Subzone and the day of the week winter maintenance may occur on their street (as posted on the sign).
 - Subzones were created to allow more flexibility for on-street parking. If a Subzone is “relaxed”, this means vehicle removal is not required that particular day.

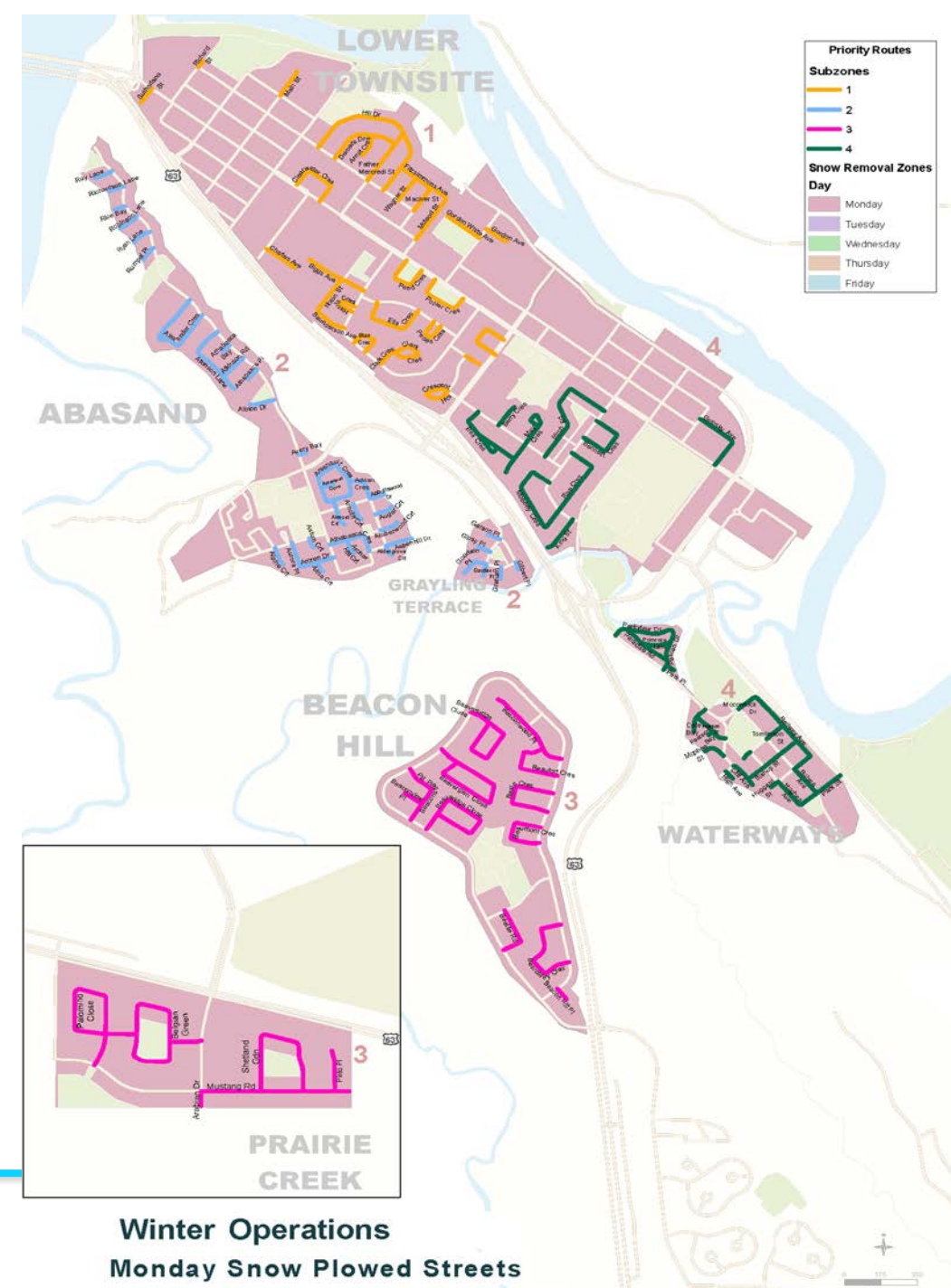
Winter Maintenance Zones & Subzones



Winter Maintenance Zones and Subzones

Winter Maintenance Zone - Monday

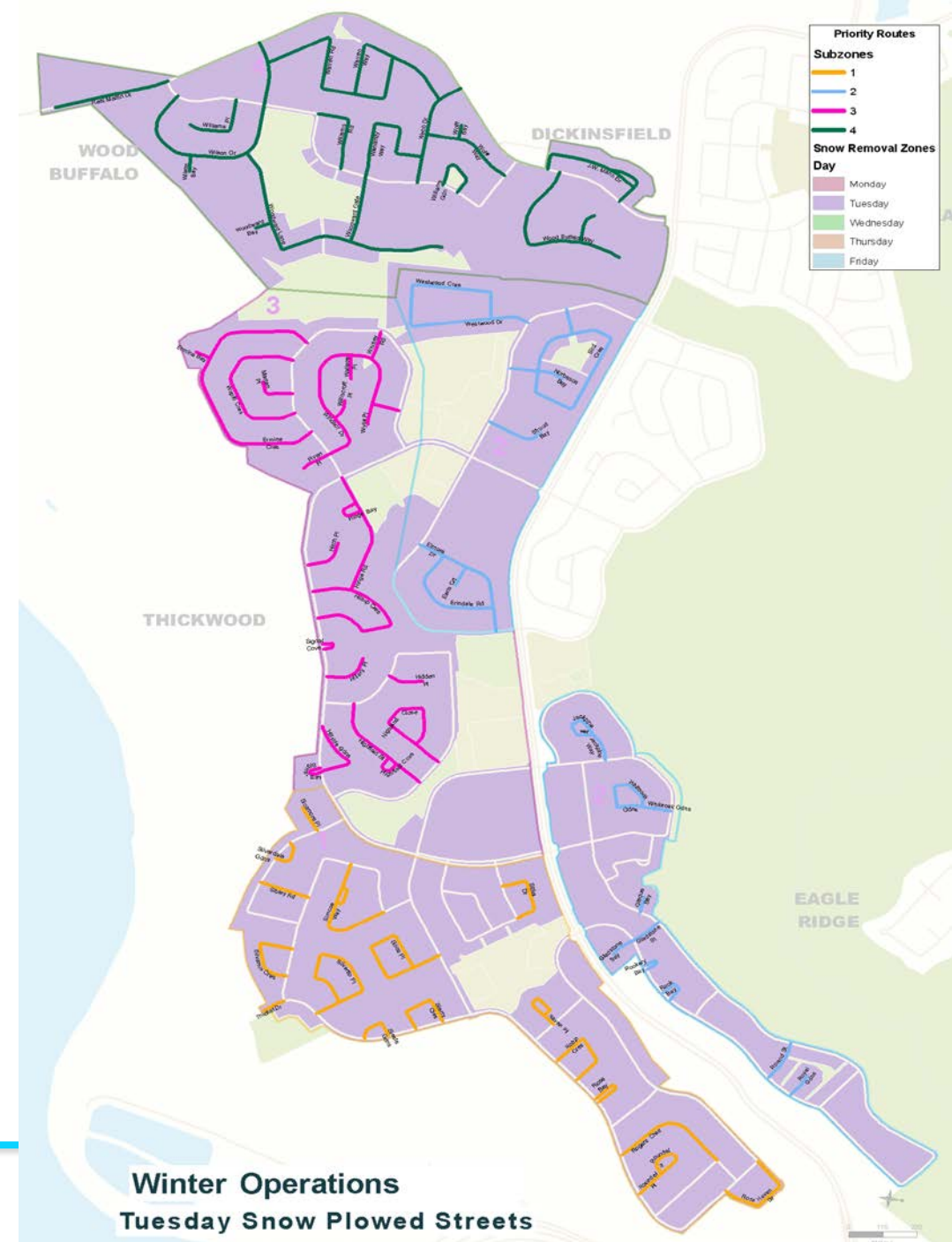
Neighborhood	Subzone
Lower Townsite (East)	Subzone 1
Abasand	Subzone 2
Grayling Terrace	Subzone 2
Beacon Hill	Subzone 3
Prairie Creek	Subzone 3
Waterways	Subzone 4
Lower Townsite (West)	Subzone 4



Winter Maintenance Zones and Subzones

Winter Maintenance Zone - Tuesday

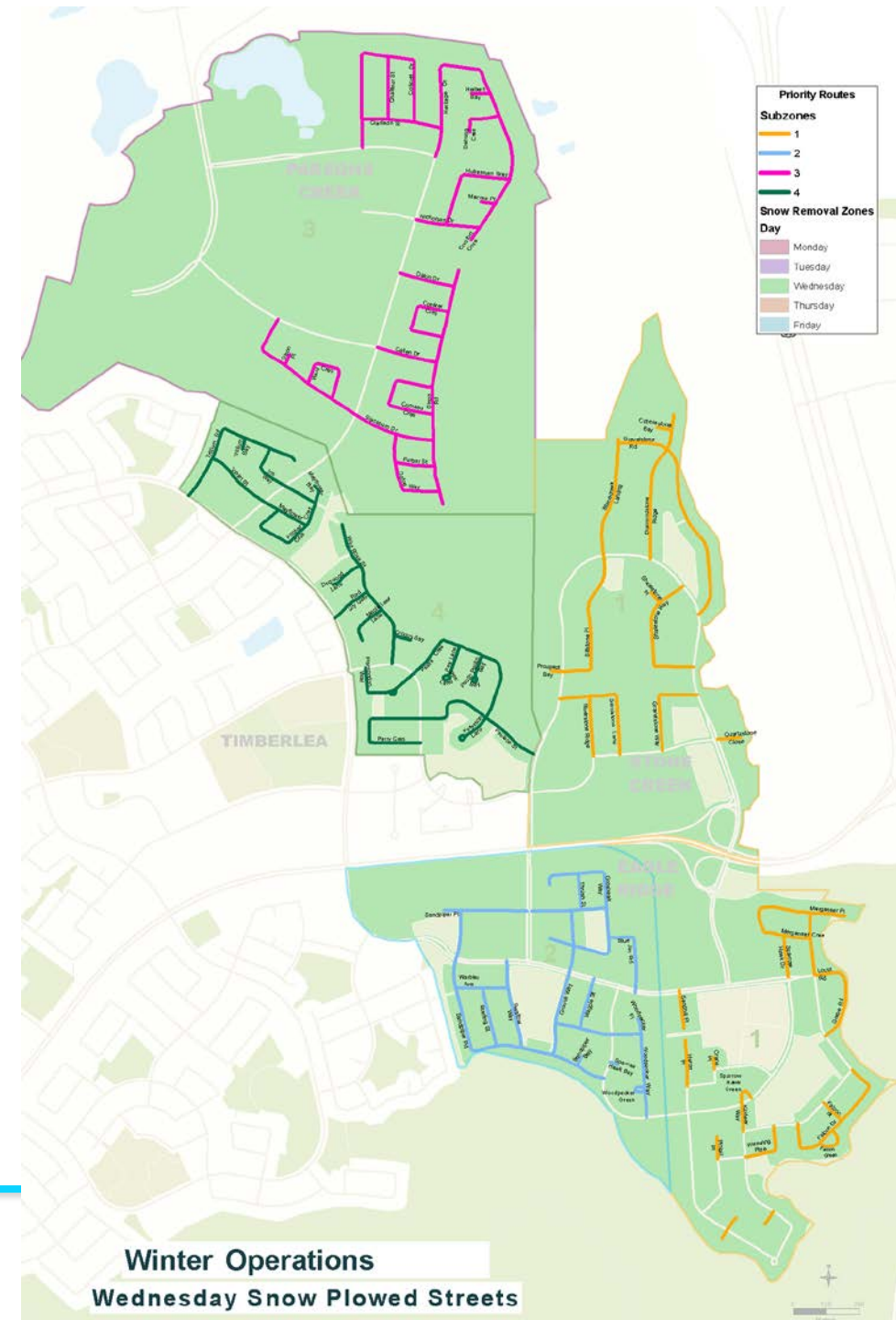
Neighborhood	Subzone
Thickwood	Subzone 1
	Subzone 2
	Subzone 3
Wood Buffalo	Subzone 4



Winter Maintenance Zones and Subzones

Winter Maintenance Zone - Wednesday

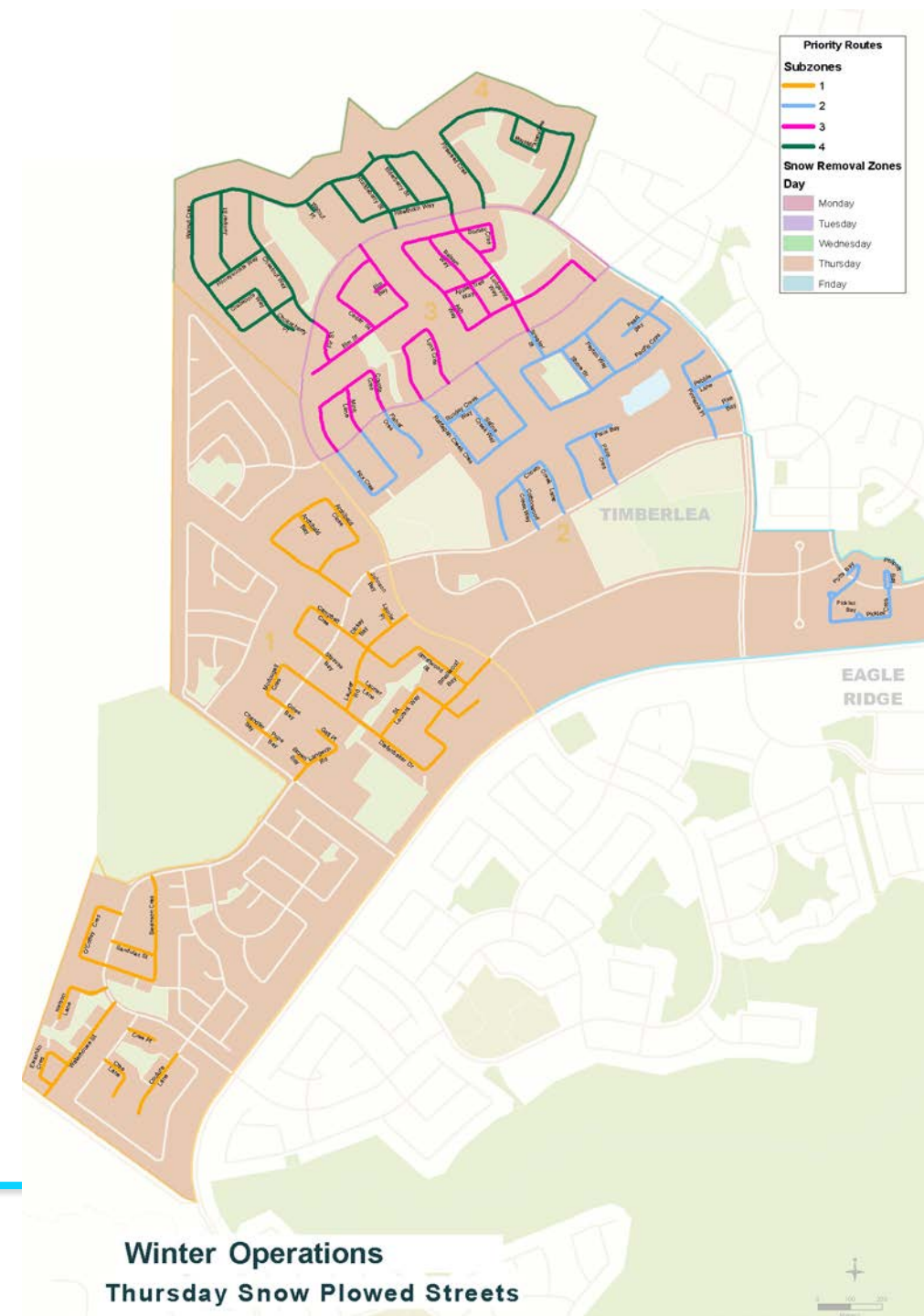
Neighborhood	Subzone
Eagle Ridge (East)	Subzone 1
Stone Creek	Subzone 1
Eagle Ridge (West)	Subzone 2
Parsons Creek	Subzone 3
Timberlea	Subzone 4



Winter Maintenance Zones and Subzones

Winter Maintenance Zone - Thursday

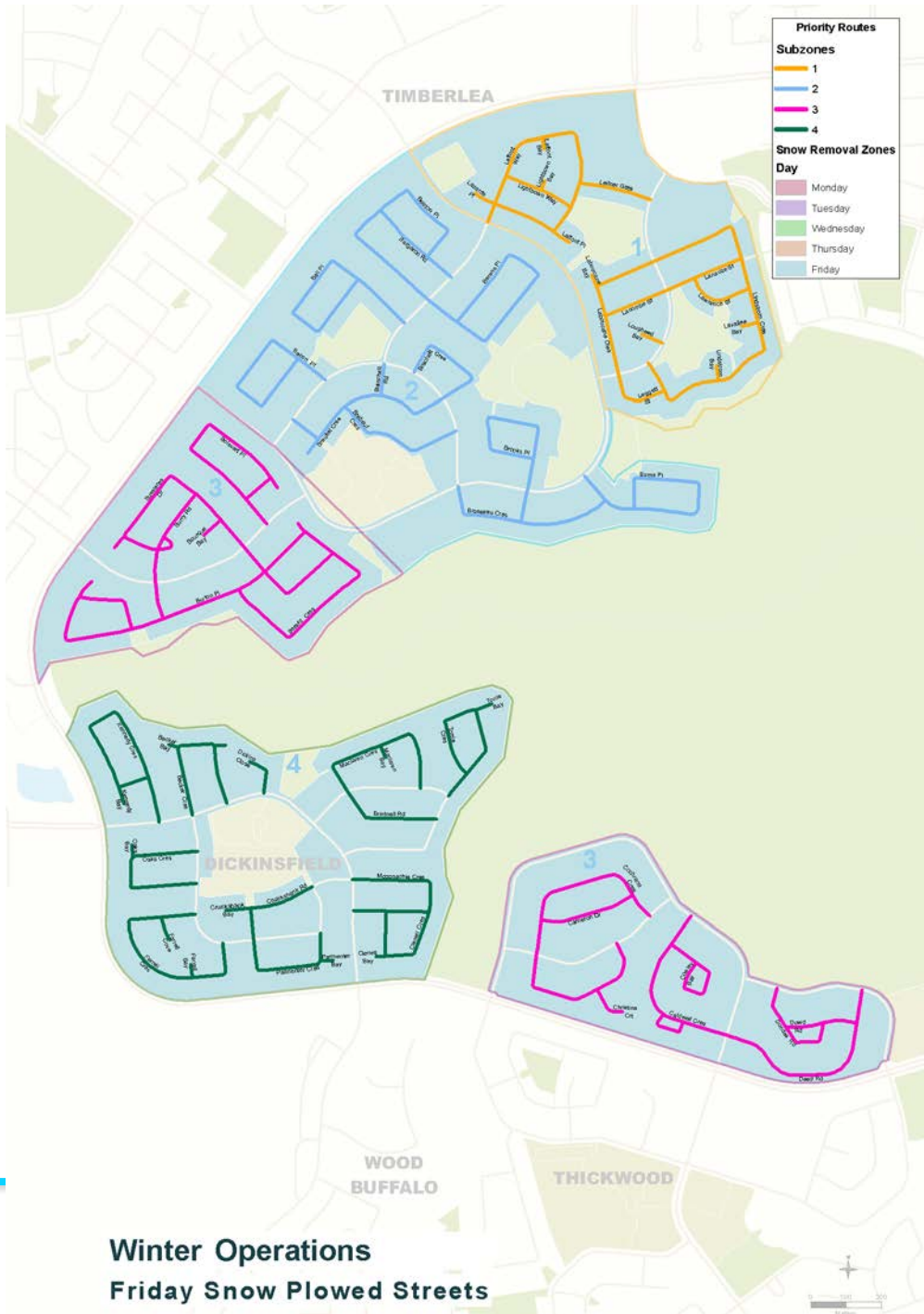
Neighborhood	Subzone
Timberlea	Subzone 1
	Subzone 2
	Subzone 3
	Subzone 4



Winter Maintenance Zones and Subzones

Winter Maintenance Zone - Friday

Neighborhood	Subzone
Timberlea	Subzone 1
	Subzone 2
	Subzone 3
Thickwood	Subzone 3
Dickinsfield	Subzone 4



Plowing vs Removal

- **Snow Plowing:** Snow is pushed from the roadway to the sides of the road. This process is not as time consuming as snow removal; therefore, it happens more often.
- **Snow Removal:** Snow is loaded into trucks and hauled to a storage site. Previously there were five strategically placed snow disposal sites throughout the urban service area, currently we have one snow disposal site located in Dickinsfield.



Benchmarking

- Through benchmarking it has been identified that all municipalities, including the RMWB, are similar in operations. As compared to others, the RMWB provides a higher level of service for maintenance on residential streets.



2020/21 Winter Maintenance Challenges

- **On Street Parking/Towing:**
 - An increased number of vehicles are parked on the streets which may be due to more residents working from home due to COVID-19.
- **Contracted Resources:**
 - Unexpected delay in obtaining supplemental hauling contractor.
- **Confusion with Subzone Activation:**
 - Program has changed frequently in the past causing communication challenges.
 - This winter season, windrows at the end of driveways in active Subzones are being removed. Typically, two Subzones are active every week and two are relaxed, with the same active and relaxed Subzones alternating each week.

2020/21 Winter Maintenance Challenges

- **Private Property Snow Removal:** Snow is being pushed from driveways and sidewalks into the street. Additionally, there is snow being stockpiled in cul-de-sacs.
- **Hours of Daylight:** Which results in a shorter period of time for winter maintenance.
- **Feasibility:** Feedback received included hauling the entire urban service area in one week which is neither viable nor fiscally responsible.

Winter Maintenance Next Steps

- **On Street Parking/Towing:**
 - Tow around the Corner
 - Utilize Central Tow Yard
 - Multiple Contracts
- **Enhanced Communications:**
 - Zones and Subzones
 - Impact of On-street Parking
 - Program Understanding
- **Policy:**
 - In accordance with established process, a formal review of the Urban Snow and Ice Control Policy PRL-150 will occur in Q3 2021

Thank you