



REGIONAL MUNICIPALITY
OF **WOOD BUFFALO**

Prairie Creek Integrated Trail

Presenter:

Public Works Department

March 25, 2019



Table of Contents

- Project Background
- Trail Option 1
- Trail Option 2
- Trail Option 3
- Trail Option 4





Background

Task

Create an integrated trail network for the Prairie Creek subdivision

Key Considerations

Complete a perimeter trail the RMWB will need to acquire or enter into land agreements with various stake holders



Background continued

Challenges

- Adjacent land is owned by the Province of Alberta
- Land Agreement is required prior to developing a perimeter trail
- Administration cannot construct a trail until land agreements are completed

Option 1

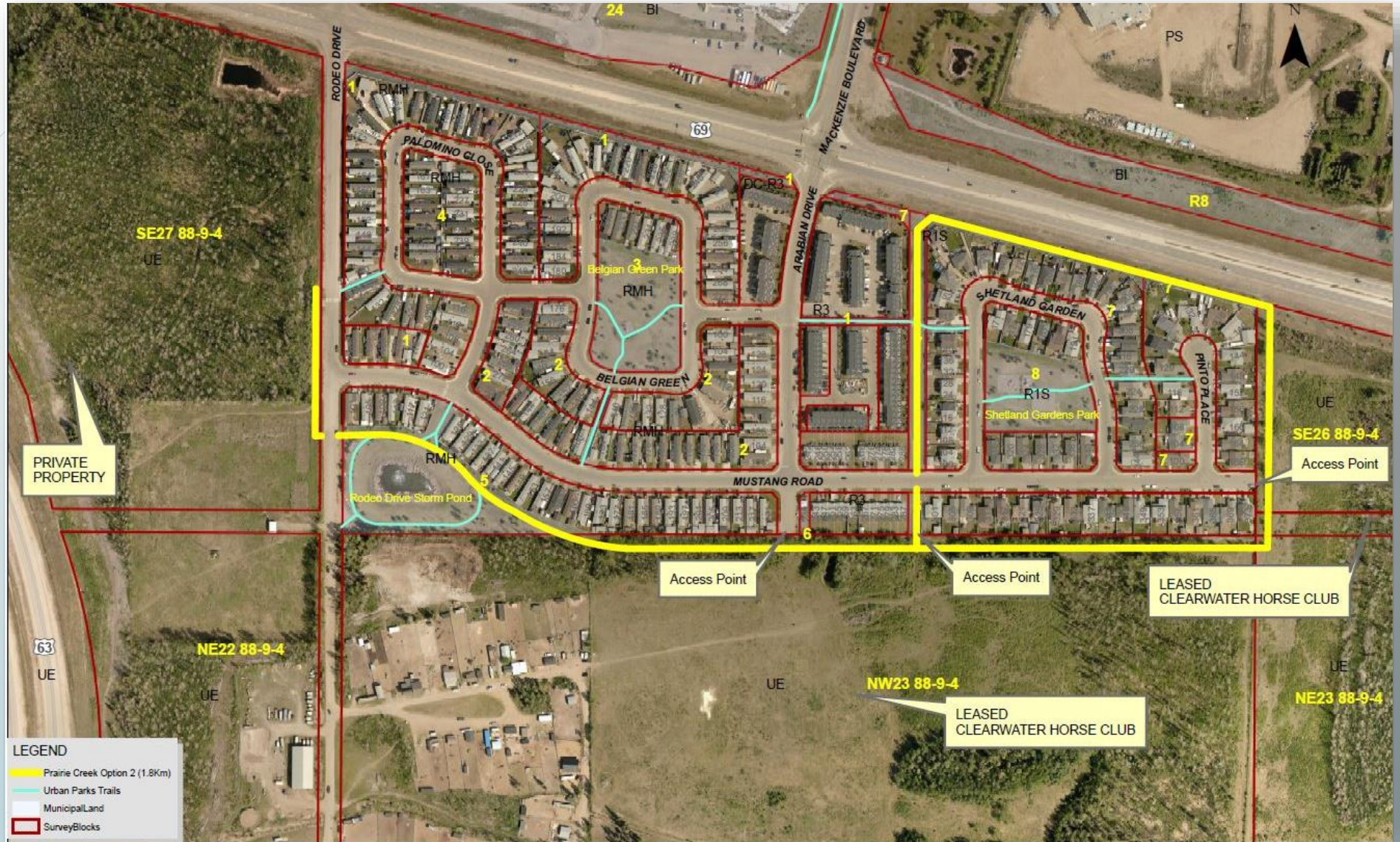
2.2 Km



\$1,301,550

Option 2

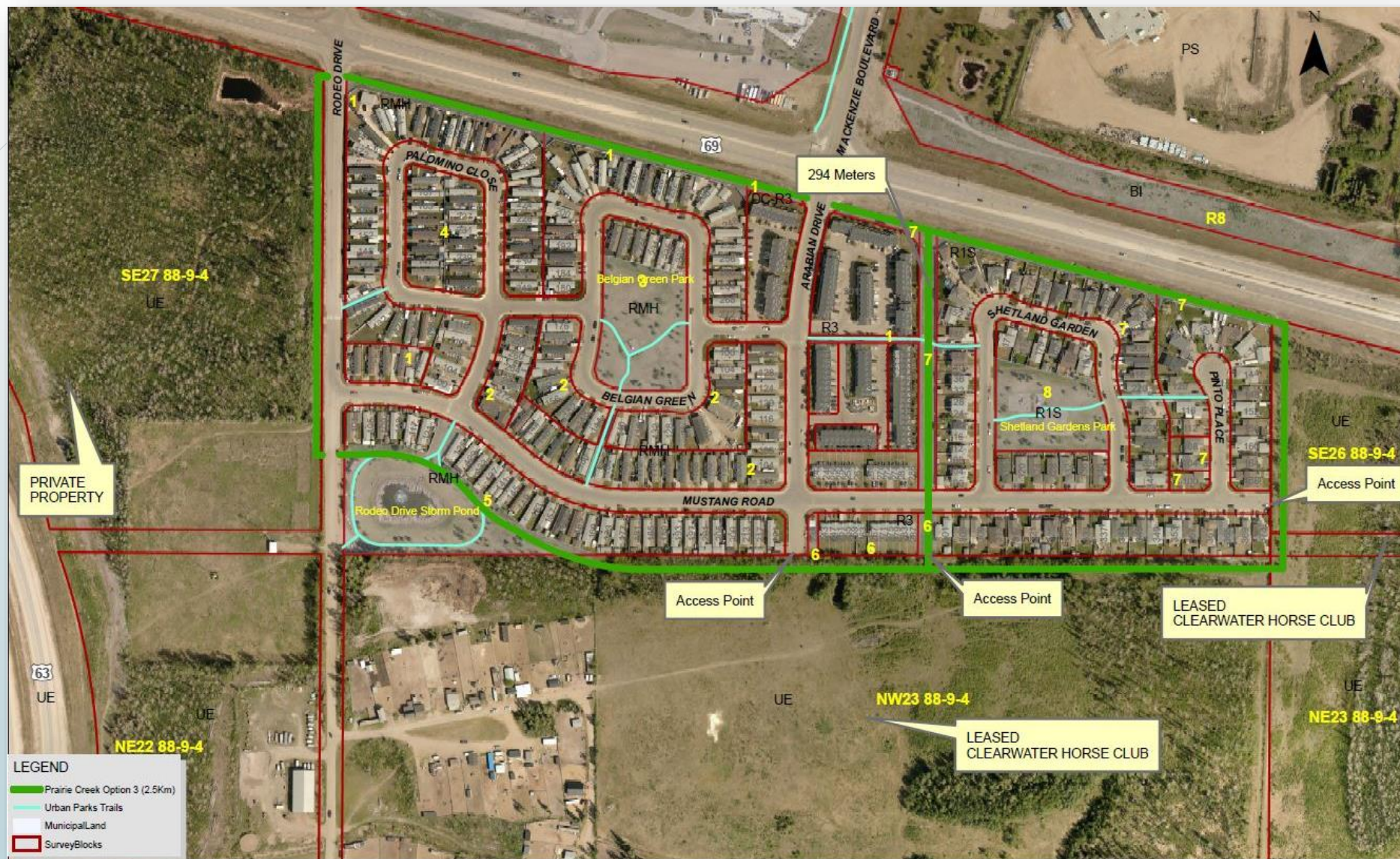
1.8 Km



\$928,080

Option 3

2.5 Km



\$1,403,700

Option 4

1.2 Km



\$444,610.00