

# Resilient Indigenous Communities

Presenter: Jody Butz, Director of Emergency Management

Department: Regional Emergency Services

Meeting Date: December 10, 2018



# Rebuilding Resilient Indigenous Communities report

- The Municipality welcomes the information in the Rebuilding Resilient Indigenous Communities report issued in partnership by the Athabasca Tribal Council, the Athabasca River Métis, and the Nistawoyou Friendship Centre on October 30, 2018
- The report offered 36 recommendations:
  - 23 recommendations relate to the Municipality
  - 13 recommendations fall outside the jurisdiction of the Municipality

# Rebuilding Resilient Indigenous Communities report

- 23 recommendation can be categorized into 4 areas
  - Emergency Management Framework – 11 recommendations
  - Training for Emergency Management, Emergency Social Services and Cultural Safety Training – 4 recommendations
  - Communication – 1 recommendation
  - Community Based Emergency Planning – 6 recommendations
- 2016 Horse River Wildfire KPMG Lessons Learned report
  - 14 recommendations

# Indigenous Emergency Management Governance

- First Nations fall under federal jurisdiction
  - Indigenous Services Canada (ISC)
    - First Nations has the authority to provide their own emergency management
- Métis Settlements fall under provincial jurisdiction
  - There are currently no recognized Métis Settlements in the Municipality as per the Métis Settlements Act

# Provincial Emergency Management Governance

## *Municipal Government Act (MGA)*

- 3(c) Develop and maintain safe communities ...

## *Emergency Management Act of Alberta*

- 11(a) [The Local Authority] shall, at all times, be responsible for the direction and control of the local authority's emergency response ...
- The Province uses Alberta Emergency Management Agency (AEMA) to coordinate it's role in Emergency Management

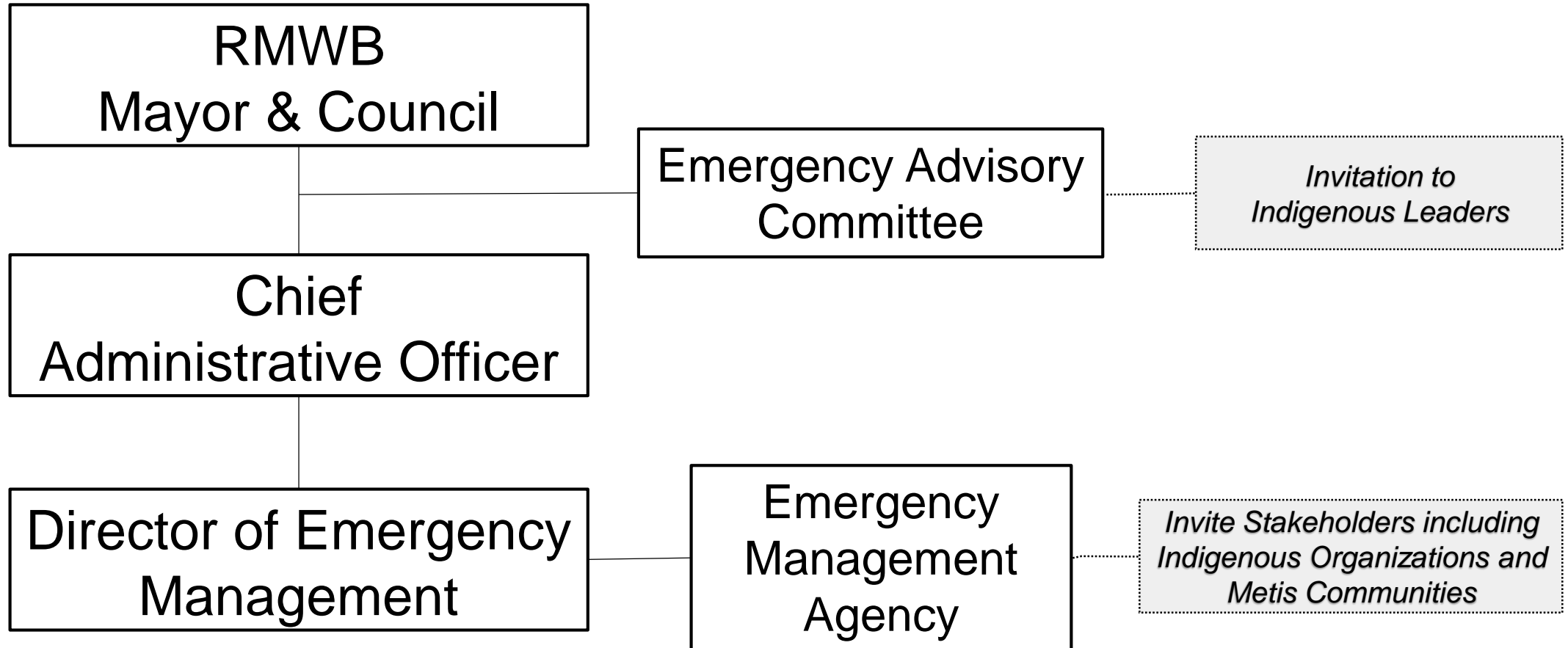
# Who is a Local Authority?

- The *Emergency Management Act* of Alberta states that a local authority includes:
  - Where the municipality has a council under the *Municipal Government Act*
  - The Minister of Municipal Affairs for special areas and improvement districts
  - The settlement council of a Métis Settlement
  - The Park Superintendent of a national park
  - The band council of First Nations if there is an agreement with the Government of Canada

# Local Authorities

- First Nations have Local Authority through their band council if there is an agreement with the Government of Canada
- The Municipality has local authority through the MGA, Emergency Management Act and the Emergency Management Bylaw
  - Emergency Advisory Committee
  - Emergency Management Agency
- Métis communities in the Municipality fall under the local authority of the Municipality

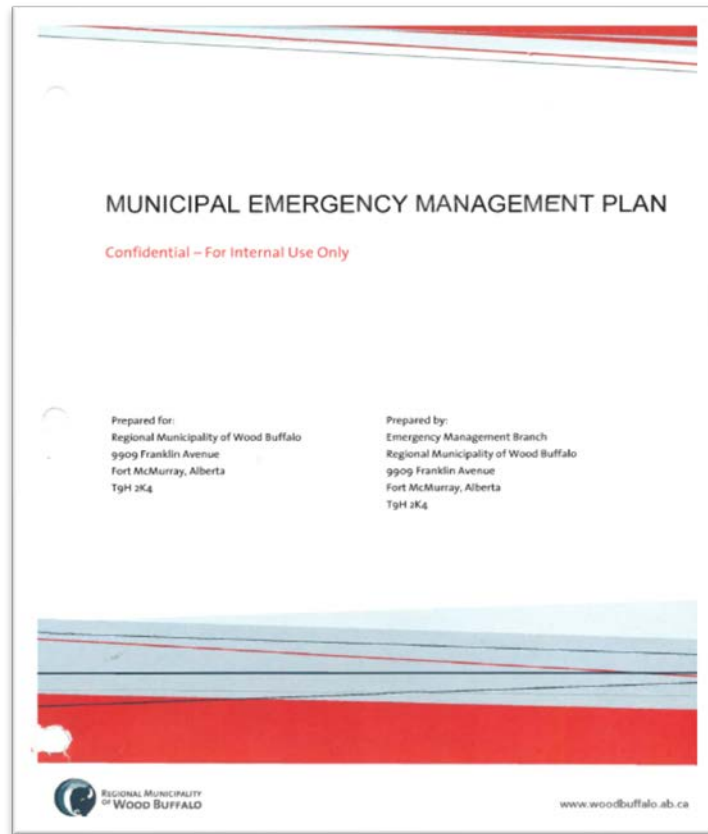
# Emergency Management Framework





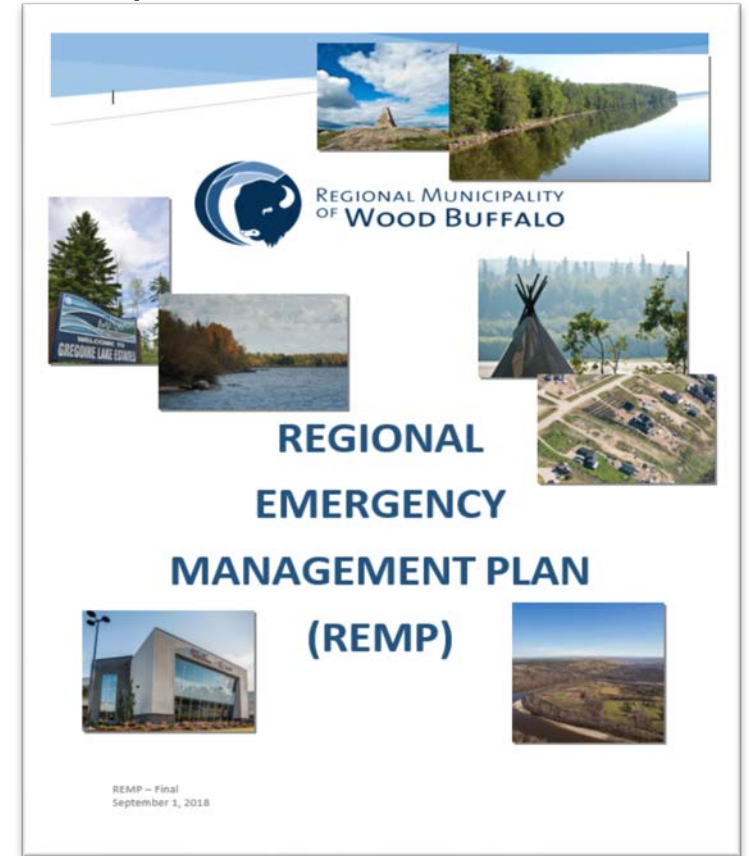
# Emergency Management Framework

## Regional Emergency Management Plan (REMP)



2009 Version

- Focus on Community Based Emergency Planning.
- Desire to make it a publicly accessible document @ [www.rmwb.ca/REMP](http://www.rmwb.ca/REMP)
- Need to reflect our current Bylaw / Governance Structure



2018 Version

# Community Based Emergency Planning

- Municipal Strategic Plan
  - Rural and Indigenous Partnerships and Communities – Initiative #4e
- Engagement
- Objectives
  - Hazard Identification specific to each community
  - Demographics of each community
  - Emergency Plans unique to each community
- Finalize / Internalize each plan
- Operationalizing each plan through training and exercises

# Community Based Emergency Planning

- “Development of community-level plans with validation through ongoing community engagement”
  - 8 rural community plans are in progress
  - 15 community groups involved in the rural areas
- All plans finalized by March 2019
- These plans can recognize and include cultural sensitivities

# Emergency Social Services (ESS)

- Evacuation reception centers have been established in Fort McMurray and Anzac
  - 60 trained local volunteers in evacuation reception centers
- Community evacuation kits will be created for Fort McKay and Fort Chipewyan in 2019
  - Reception facilities to be selected
  - Recruitment of local volunteer base

# FireSmart

- Regional FireSmart Advisory Committee was established in 2017
- FireSmart vegetation management projects
  - [www.rmwb.ca/FireSmart](http://www.rmwb.ca/FireSmart)
  - 120 hectares are scheduled for this winter
- The Municipality received national recognition for FireSmart activities in the Wood Buffalo region since the 2016 Horse River Wildfire



# Community Resiliency Strategy



# Community Resiliency Strategy

- Community Resiliency Strategy - Phase II (2019)
  - 11 month project to Operationalize a Disaster Risk Management process within municipal administration
  - Continuity Management Plan
  - A Recovery Plan which will be specific to our region and for each community, both urban and rural
    - will include support for business resumption and recovery of the local economy post disaster

# Vulnerable Persons Self-Registry

- Vulnerable Persons Self-Registry project was launched and further development will occur in 2019
  - Free, voluntary and confidential service for persons who are at great risk during an emergency
  - Will increase personal safety by securely providing key information to first responders



# Training for Emergency Management

- Emergency Management and Emergency Social Services training program is open to any partner or stakeholder in the region
- Since fall of 2016, 500+ people have received training through the Emergency Management branch
- The Municipality currently offers Aboriginal Awareness training and is mandatory for Emergency Management employees

# Opportunities

- Ensure cultural differences and sensitivities are embodied in the Community Based Plans
- The addition of a second Liaison Officer dedicated to the needs of Indigenous people during REOC activation
- Invite indigenous leaders to participate in the Emergency Advisory Committee
- Commit to improving communication when training opportunities are available through the Emergency Management branch
- Building integrated relationships with AEMA

# Questions