

Rural Water & Sewer Servicing

Presenter: Matthew Hough, Director

Department: Engineering

Meeting Date: June 12, 2018

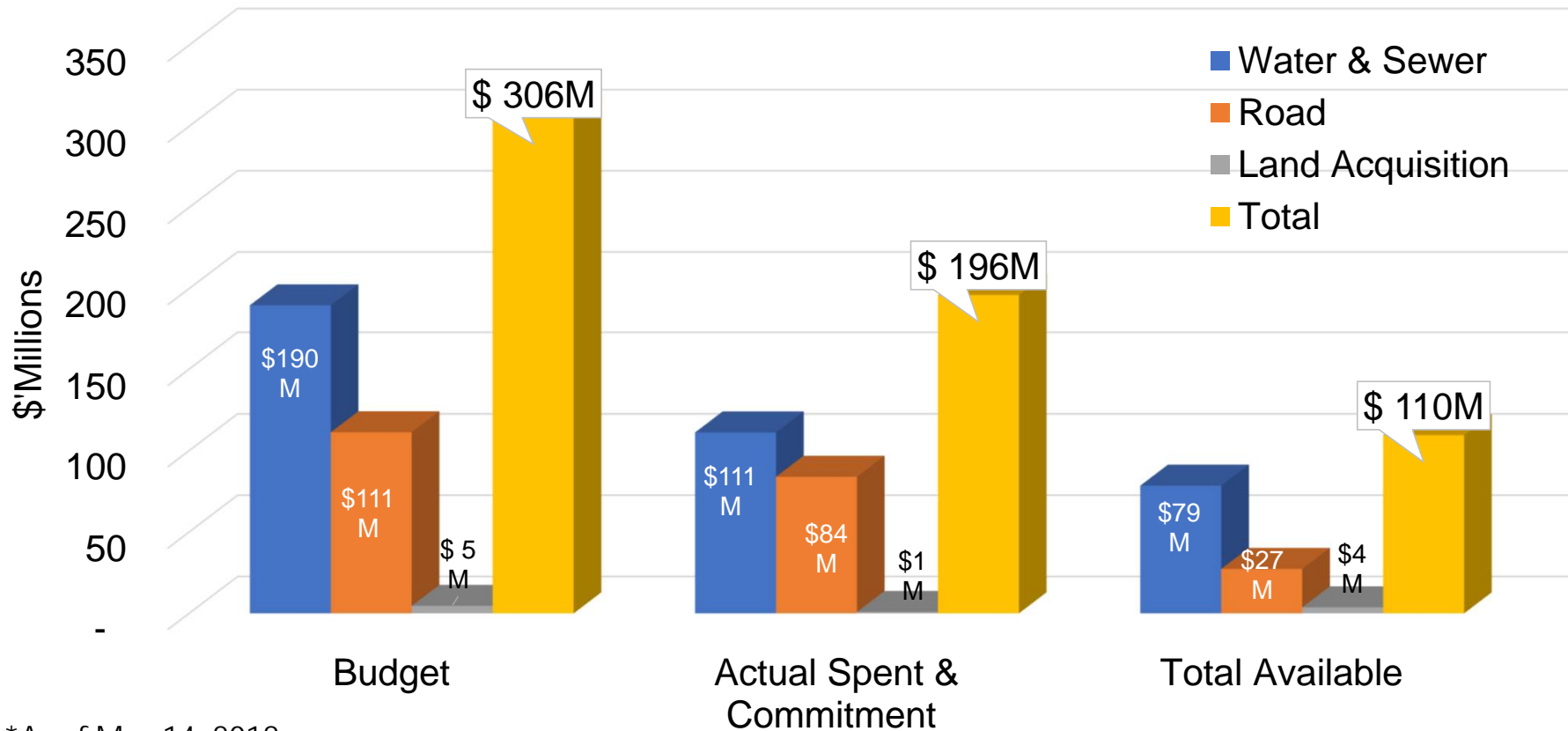


Background

Rural Water and Sewer Servicing Program

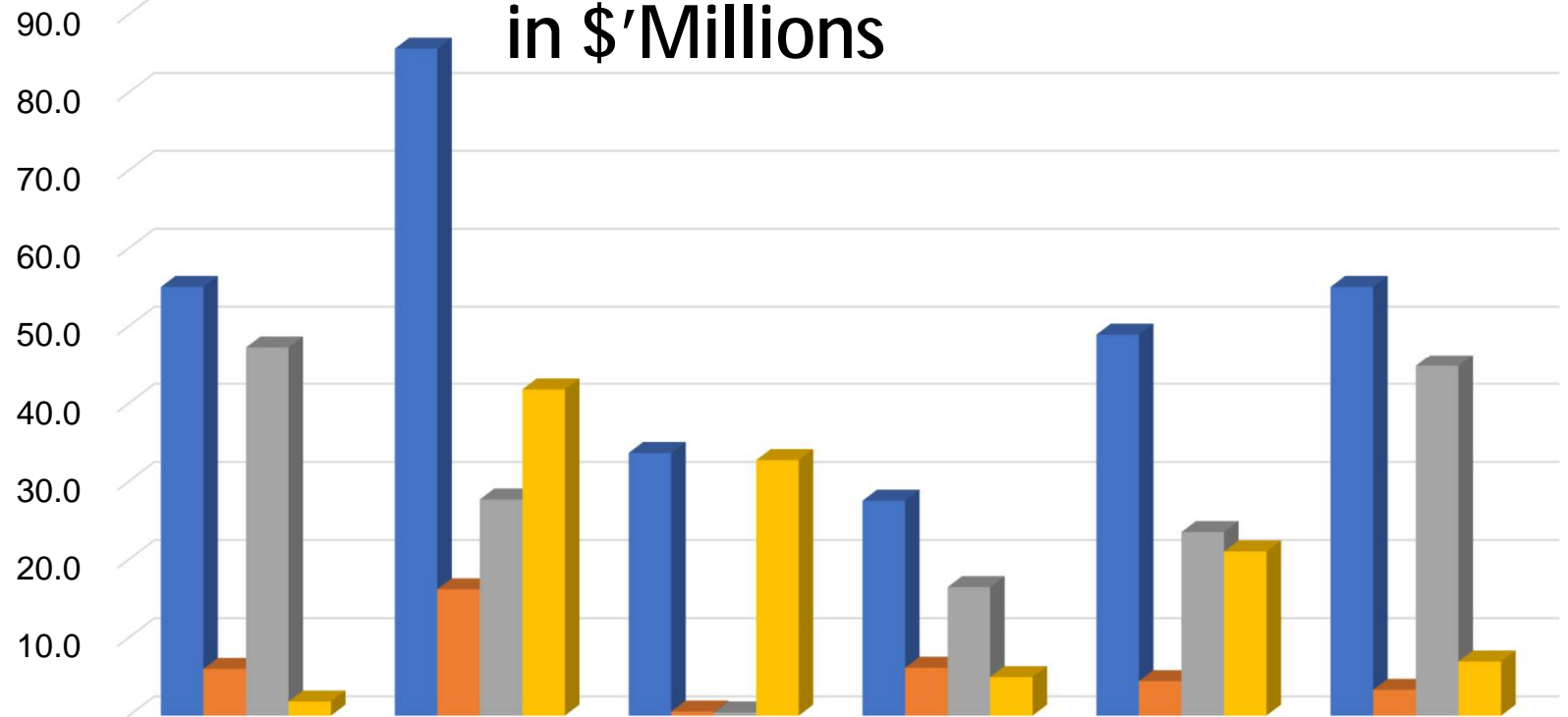
- Began in 2014
- The program includes
 - Water and sewer design and construction \$190M
 - Road design and construction \$111M
 - Land acquisition \$5M
- Total RWSS program budget is \$306M

Current Capital Spending Portfolio for Rural Water, Sewer, Road & Land



*As of May 14, 2018

Actual Spent & Committed by Communities in \$'Millions

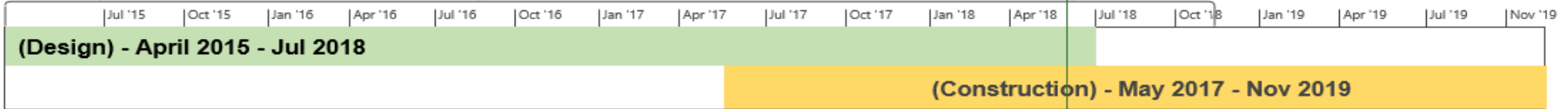


	Anzac	Conklin	Draper	GLE	Janvier	Saprae
■ Budget Allocation	55.0	85.6	33.6	27.5	48.9	55.0
■ Actual up to May 16 2018	6.0	16.2	0.5	6.1	4.4	3.3
■ Commitment	47.2	27.7	0.4	16.4	23.5	44.8
■ Available	1.8	41.8	32.7	4.9	21.0	6.9

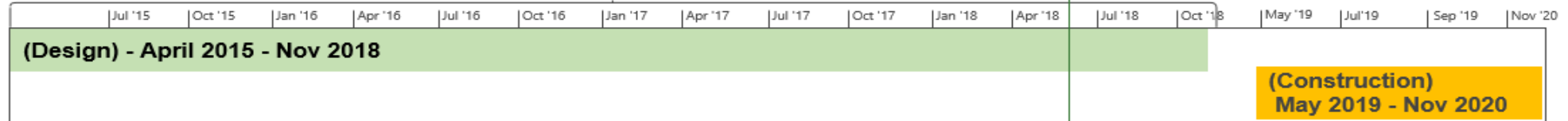
Design and Construction Schedule* all Communities

ANZAC, GREGOIRE LAKE ESTATES, SAPRAE CREEK

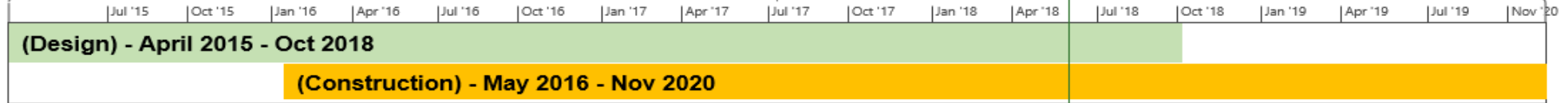
Today May 16, 2018



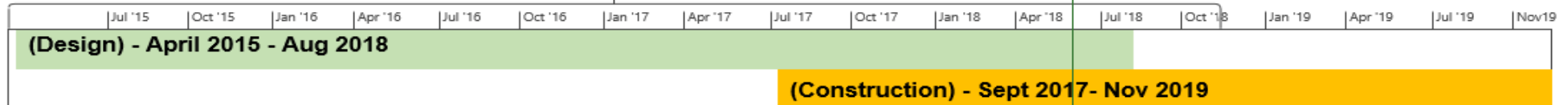
DRAPER



CONKLIN



JANVIER



*Schedule only shows mainline design & construction (service connection schedule to follow)

Risk Management

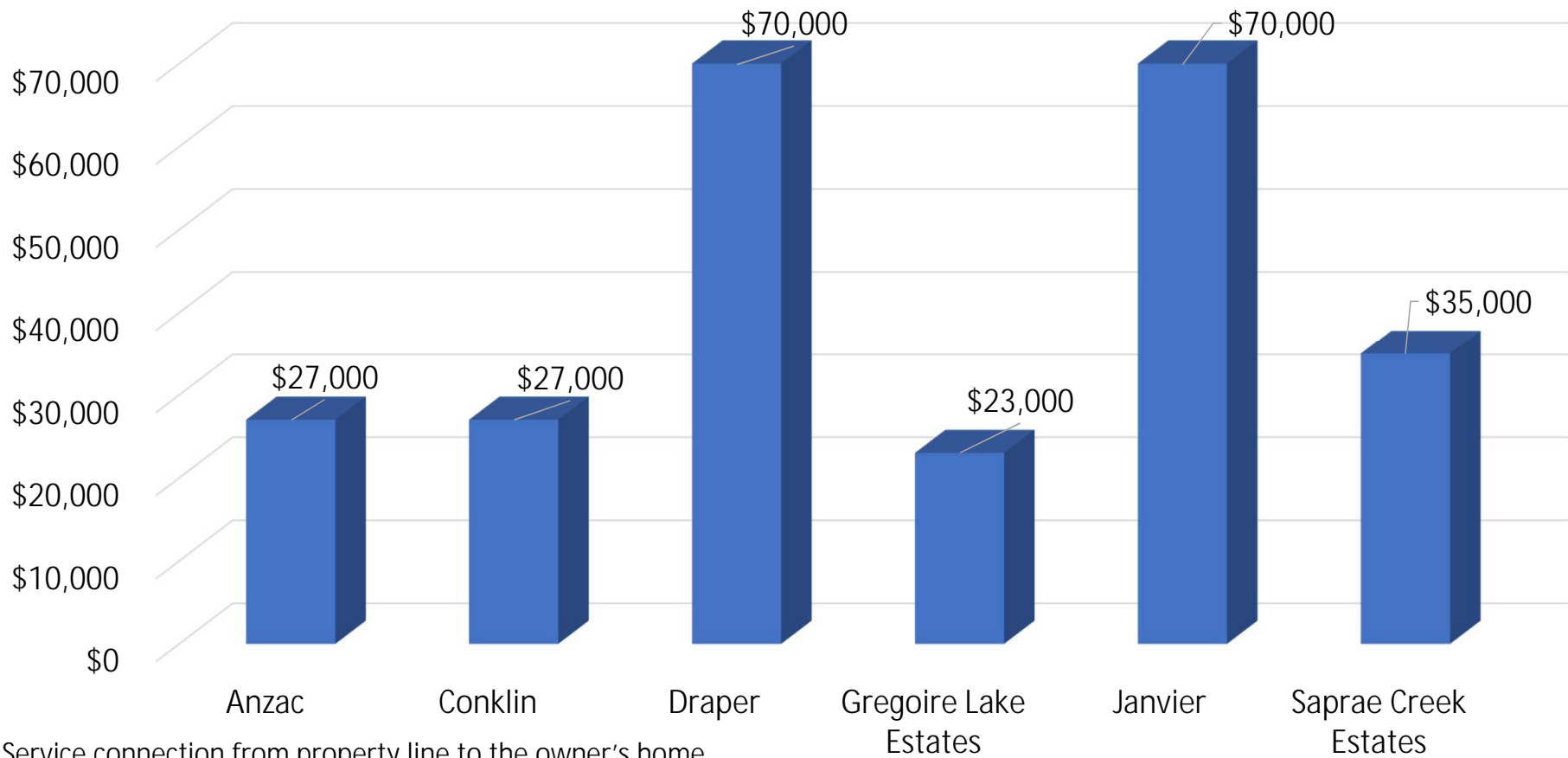
The following have been identified as risks to the program:

- Designing and installing services in Draper
- Operation and maintenance cost requirements for low flow conditions
- Simultaneous design and construction
- Expired leases, squatters, non-conforming use, vacant lots

Residents' Contributions

- Residents' contributions are \$10,000 per lot in Sapræ Creek or \$16,000 in other communities
- Residents' contributions are approximately \$16M, which is 10% of the original capital project
- Residents' contributions are also known as “fee to connect”
- Public perception is this fee pays for service connections to homes

Estimated Service Connection Costs/Lot *

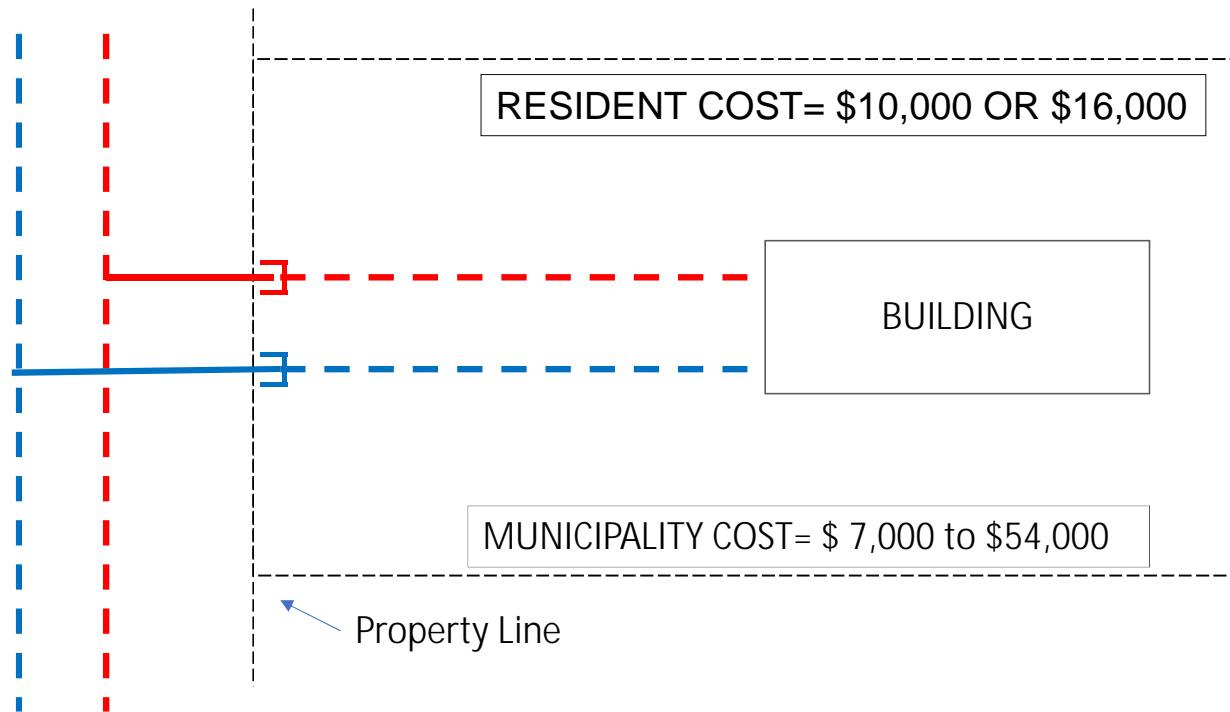


* Service connection from property line to the owner's home

Key Considerations

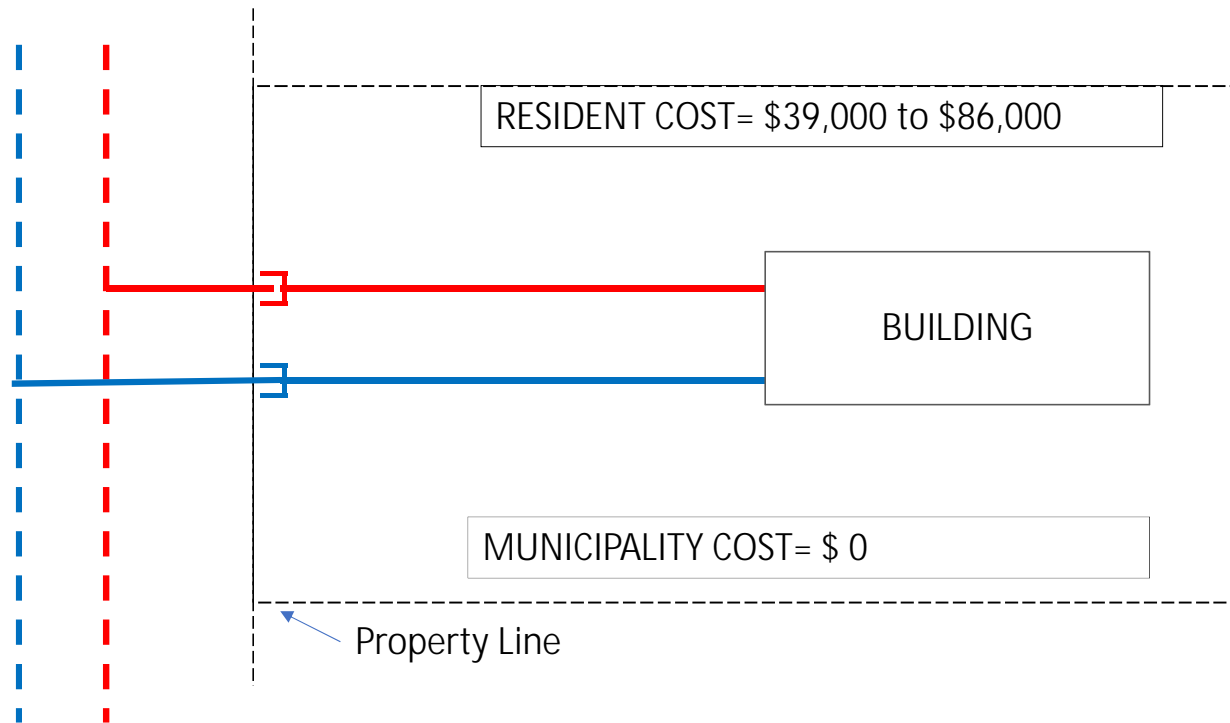
- Residents in Conklin can connect to RWSS starting in 2019
- Cost to connect is prohibitive for many residents
- Administration is seeking Council direction with regard to service connections
- Total cost to service all lots (approximately 1,000) is \$40M
- All details of how residents access the new system, and at what cost, will have to be implemented by a bylaw

Recommended Option



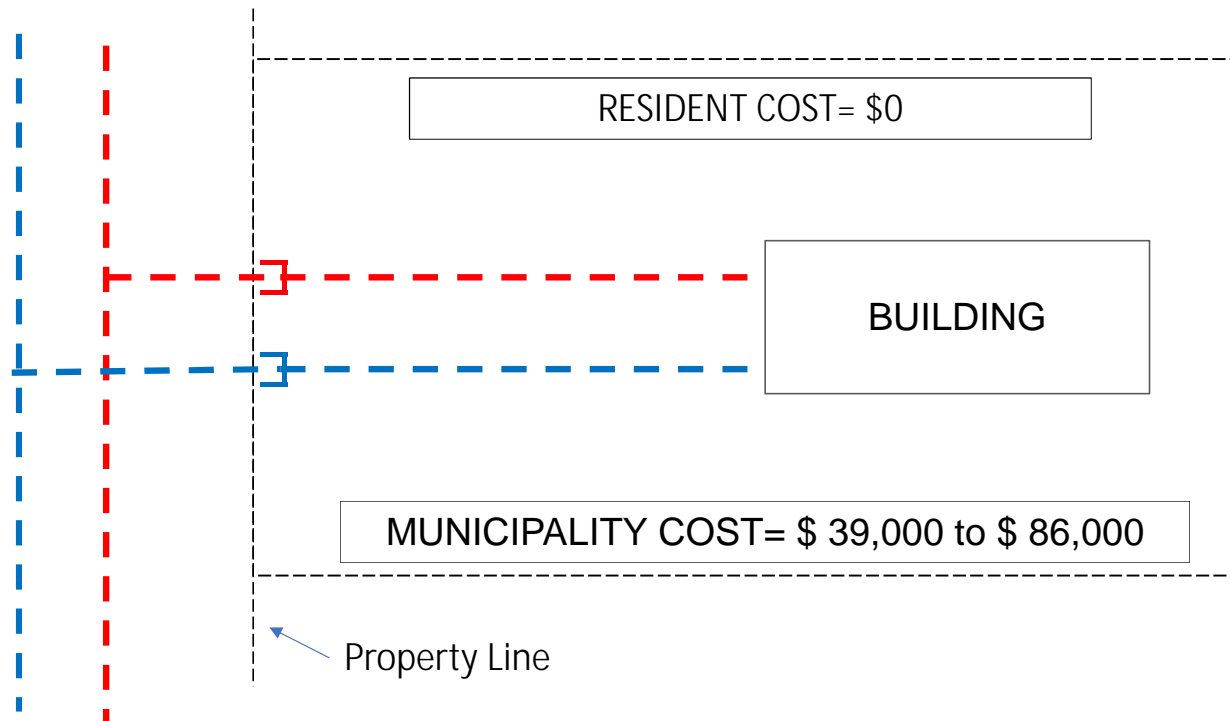
Residents contribute \$16,000 (\$10,000 in Sapræ Creek) to the Municipality, and the Municipality pays for the installation of service connections.

Alternative 1



Residents contribute \$16,000 (\$10,000 in Sapræ Creek) to the Municipality. Residents are also responsible for service connection costs.

Alternative 2



Residents' contributions are waived and the Municipality pays for the installation of service connections.

Summary

- The **recommended option** and alternatives can be summarized as:
 - Residents contribute \$16,000 (\$10,000 in Sapræe Creek) per lot and Municipality funds \$24M for services totalling \$40M
 - Alternative 1 - Residents pay \$39,000 to \$86,000 per lot for services
 - Alternative 2 - Municipality funds \$40M for services
- Funding installation of services is way to avoid liability involved in doing work on private property
- Administration will make funding request, and propose processes and bylaw amendments, during 2019 budget deliberations