

Waterfront Advisory Committee

Waterfront Park Project

Thursday, April 15, 2021



NEXT STEPS



Project Update: Current Status

- Priority 1 – 30% Concept Design & Engagement (Complete)
 - Public Engagement
 - Stakeholder and Rightsholder Workshops
- Priority 1 – Detailed Design – Initiated
- Priority 2 – Concept Design for Waterfront Park – Initiated

Concept Design Options

OPTION 1 - CLEARWATER COMMON

PRIORITY AREA 1



OPTION 2 - SNYE LANDING

PRIORITY AREA 1



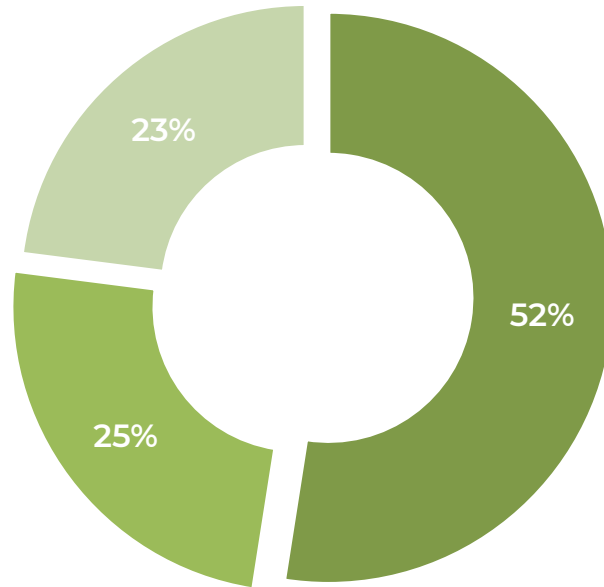
What We Heard

Q1: What TYPE of activities would you like to see at Snye Point Outdoor Event Space In the future? Please select all that apply.



What We Heard

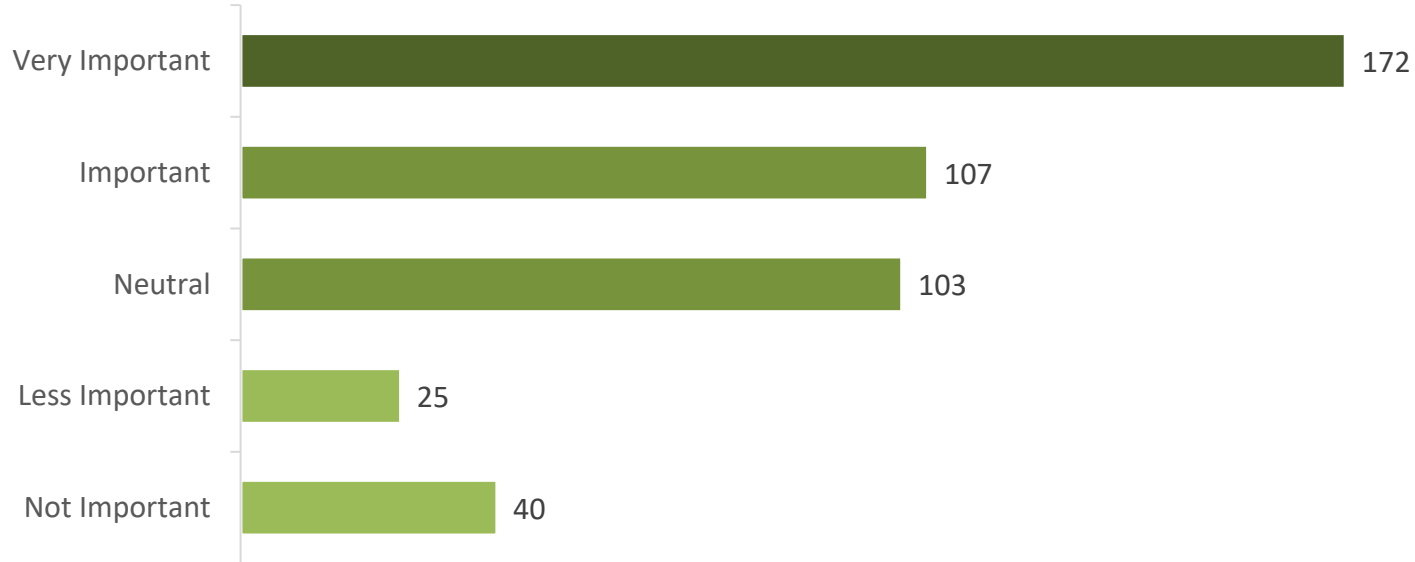
Q2: A key difference between Concept 1 (Clearwater Common) and Concept 2 (Snye Landing) is the kind of access allowed to Snye Point. What kind of access would you prefer to see at Snye Point in the future?



- I prefer to see permanent vehicle access to Snye Point.
- I prefer to see periodic vehicle access
- I prefer to see pedestrian, emergency services, and cycle access only to Snye Point.

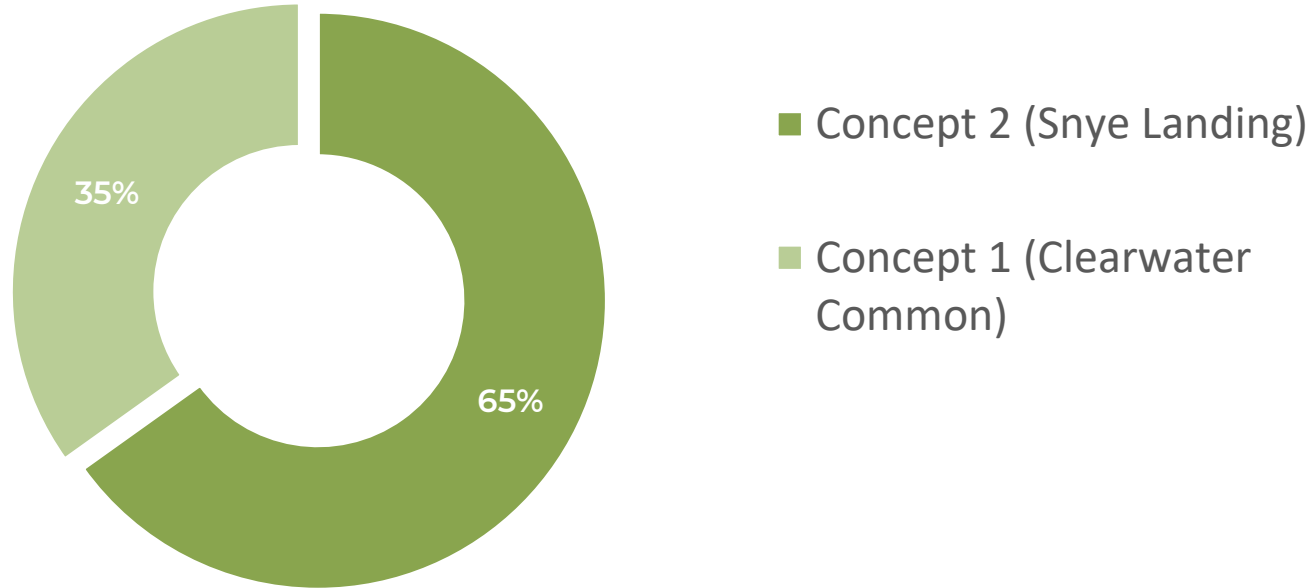
What We Heard

Q3: Another key difference between Concept 1 (Clearwater Common) and Concept 2 (Snye Landing) is the connection between park space and the Snye River. Currently, Morimoto Drive is close to the water's edge. How important is it to you that the park space directly connects to the water?



What We Heard

Q4: After reviewing the two initial concepts, which one do you prefer?



What We Heard – Additional Topics

- Cost of Park Improvements
- Flooding & Resiliency
- Parking & Vehicle Circulation
- Play
- Vendors
- Washrooms

Reflecting Community Voices

- Starting work on detailed design
- Incorporating feedback from engagement sessions
 - Adjustments to design and preferred concept
 - Combination of both Concept Option 1 and 2
 - Developing collaborative framework to incorporate general regional history, Métis and Indigenous history, storytelling and culturally significant plant material into the park design and Reconciliation Trail

Key Considerations

- Interface and Shared Space with Float Planes/Aerodrome
- Pedestrian Water Access
- Washroom Locations
- Athabasca Causeway Site
- Fire Pits
- Event Power
- Mitigation of Vehicle and Pedestrian Conflict

Design Progress



www.rmwb.ca



Design Progress



Next Steps

Priority Area 1

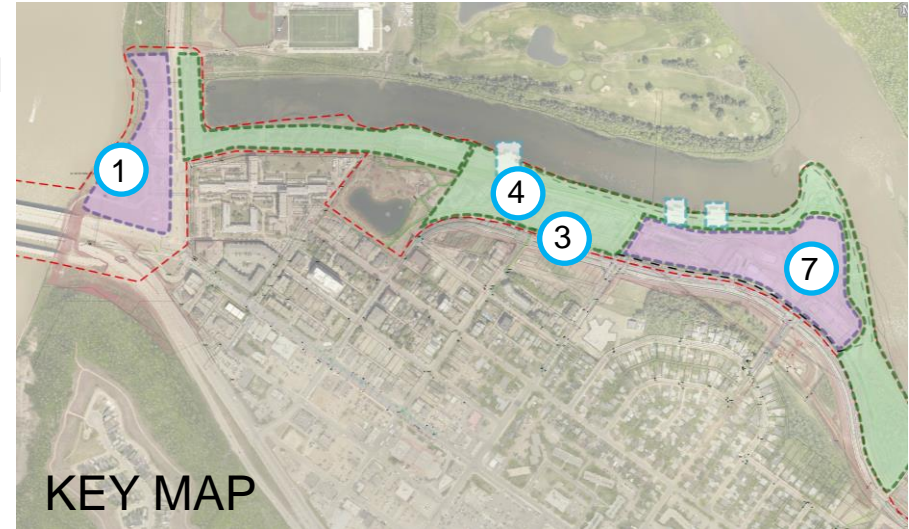
- Finalize Design (April/May 2021) **WFAC Engagement*
- Tender & Construction Year 1 (Summer-Fall 2021)

Priority Area 2

- Comprehensive Engagement (Summer 2021)
- Finalize Concept Design (Summer/Fall 2021)
- Detailed Design and Tender (2022+)

2021 Construction Plan

1. Athabasca Causeway Site
2. Moccasin Flats/Reconciliation Trail
3. Morimoto Drive alignment
4. Flexible Outdoor Space
5. Snye Point
6. Waterfront Access/Shoreline
7. Outdoor Event Space
8. Signage and wayfinding



PHASE 1 (2021 CONSTRUCTION START)

PHASE 2A(2022 CONSTRUCTION START)

Open Discussion

- Do you see your comments reflected?
- Any considerations for the proposed elements of 2021 construction scope of work?

Thank You!