

2020 Proposed Operating Budget

Department

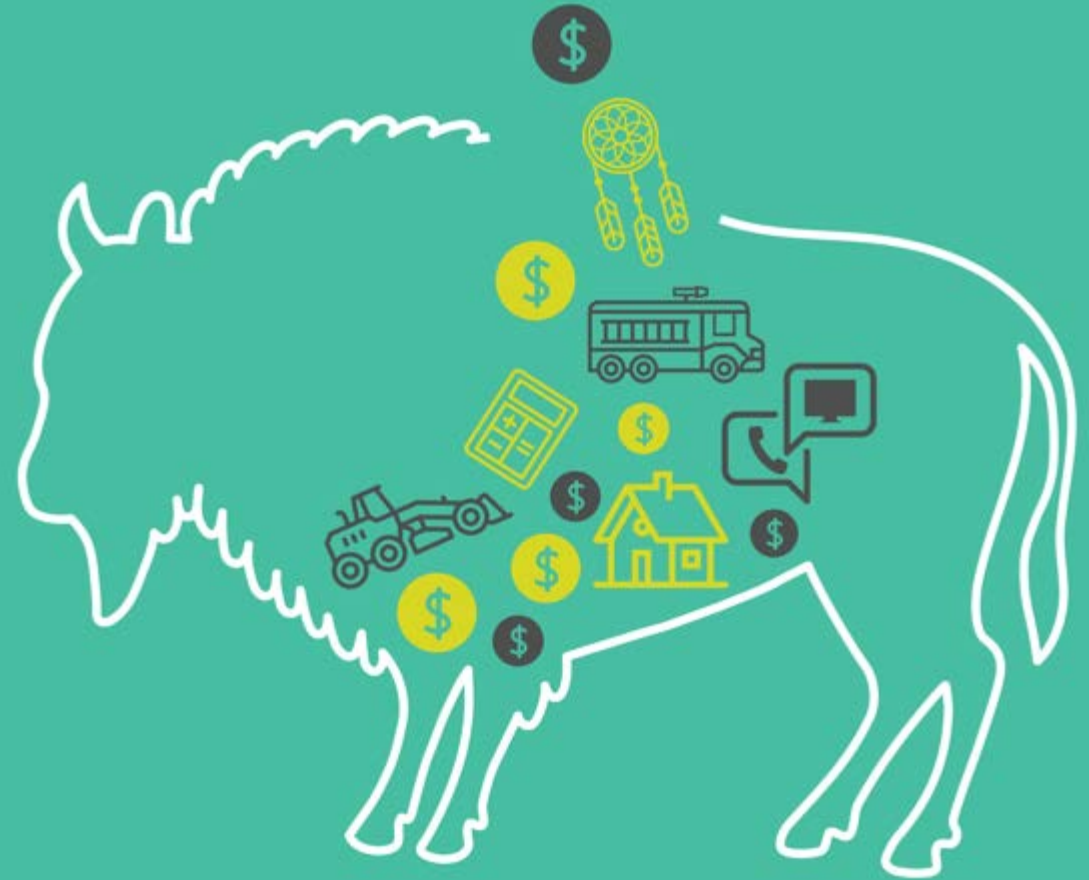
Supply Chain Management

Presenters

Rachel Orser, Director

Date

November 27 – November 30, 2019



Mandate

The Supply Chain Management (SCM) department is responsible for the procurement of goods and services to meet the current and future needs to the Municipality in a cost-effective manner through accountable, fair, open, and transparent processes in accordance with relevant trade agreements and Public Procurement Law.

Supply Chain
Management

Strategic Plan

Supply Chain Management is responsible to deliver on the following Strategic Plan items:

1a Fiscal Responsibility

1e Developing our People

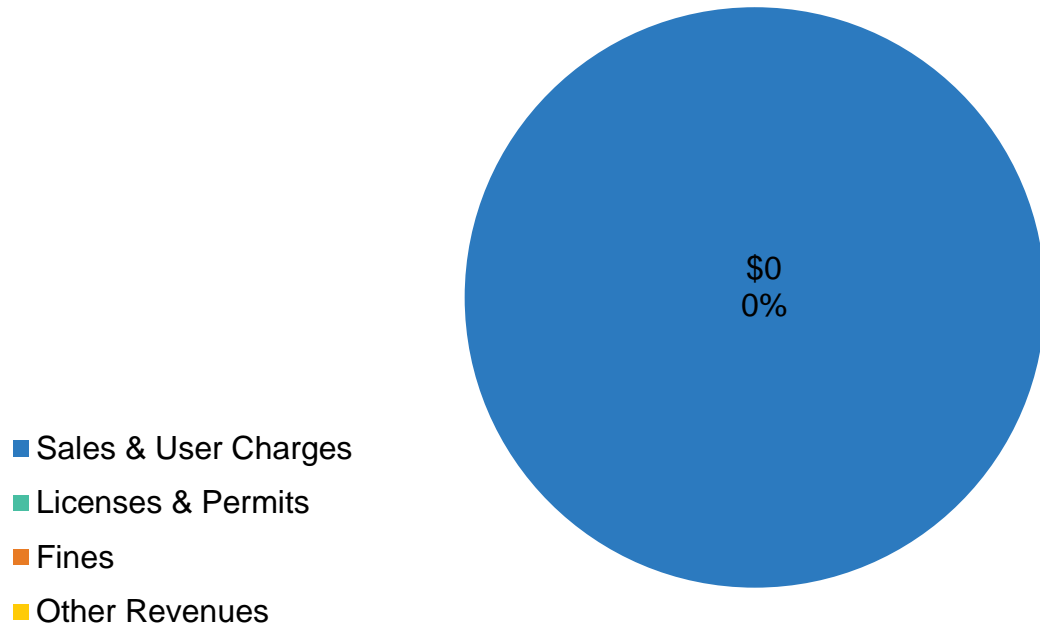
- Strengthening relationships both internally and externally
- Vendors are treated fairly and without bias
- Objectivity and fairness monitoring during the evaluation process
- Open and transparent processes and practices
- Investing in continuous learning

2020 Proposed Operating Budget

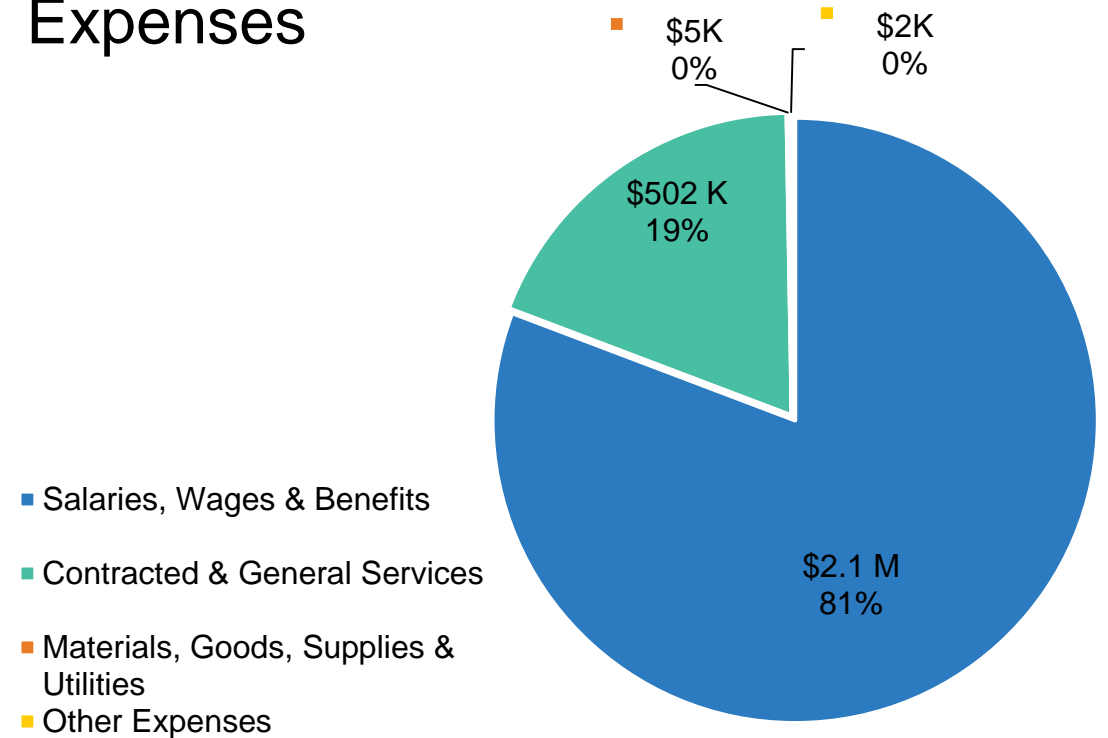
	2019 Budget	2019 Projection	2020 Proposed Budget	Net Change	2021	2022
Revenue	0	0	0	0	0	0
Expenses	1,912,829	2,617,829	2,650,529	32,700	2,703,539	2,757,610
Net	(1,912,829)	(2,617,829)	(2,650,529)	(32,700)	(2,703,539)	(2,757,610)

2020 Proposed Operating Budget

Revenues



Expenses



Supply Chain Management

Programs and Services at a Glance

- Competitively bidding goods, services, construction and contracts for all departments.
- Obtain best value by ensuring a fair and transparent process in accordance with policies, procedures, relative trade agreements and legislation.
- Provide Support to clients and stakeholders to meet current and future procurement needs.

Supply Chain Management

2020 Proposed Operating Budget Details

2020 Proposed Budget - SUPPLY CHAIN MANAGEMENT

(Pg 1 of 1)

Programs/Services	2019 Budget	2019 Projection	2020 Proposed Budget	Change
Supply Chain Management	1,912,829	2,617,829	2,650,529	32,700
Supply Chain Management	1,912,829	2,617,829	2,650,529	32,700

Supply Chain Management

2020 Proposed Operating Budget Details

SUPPLY CHAIN MANAGEMENT - Budget Details

(Pg 1 of 3)

	2019 Budget	2019 Projection	2020 Proposed Budget	Change
Revenues:	-	-	-	-
Exempt Salary - Regular	372,421	378,421	571,221	192,800
CUPE Reg. Wages	1,186,518	1,215,518	1,189,962	(25,556)
CUPE OT Wages	25,000	75,000	50,000	(25,000)
Benefit Allocation	81,065	81,065	83,289	2,224
EI Expense	14,365	14,365	16,773	2,408
CPP Expense	38,307	38,307	39,448	1,141
LAPP Expense	154,335	155,335	174,511	19,176
RRSP Expense	7,448	9,448	15,480	6,031
Salaries Wages and Benefits	1,879,459	1,967,459	2,140,684	173,225
Business Travel	-	-	3,300	3,300
Conference Travel	4,800	4,800	-	(4,800)

Supply Chain Management 2020 Proposed Operating Budget Details

SUPPLY CHAIN MANAGEMENT - Budget Details

(Pg 2 of 3)

	2019 Budget	2019 Projection	2020 Proposed Budget	Change
Employee Relations	850	850	850	-
Conference Registration	4,400	4,400	2,520	(1,880)
Job Specific Training	3,000	3,000	-	(3,000)
Training - Beneficial - Fees	12,300	3,300	43,345	40,045
Membership & Registr. Fee	1,800	1,800	1,150	(650)
Freight Charges	1,000	1,000	1,000	-
Mobile Phones	720	720	480	(240)
Prof. Services	-	626,000	450,000	(176,000)
Contracted and General Services	28,870	645,870	502,645	(143,225)
Title Searches	-	-	1,800	1,800

Supply Chain Management

2020 Proposed Operating Budget Details

SUPPLY CHAIN MANAGEMENT - Budget Details

(Pg 3 of 3)

	2019 Budget	2019 Projection	2020 Proposed Budget	Change
Purchases from Other Governments	-	-	1,800	1,800
Stationary & Office Supplies	2,500	2,500	2,550	50
Food Cost	2,000	2,000	2,000	-
Consumables	-	-	850	850
Materials Goods Supplies and Utilities	4,500	4,500	5,400	900
Expenses:	1,912,829	2,617,829	2,650,529	32,700
NET	(1,912,829)	(2,617,829)	(2,650,529)	(32,700)

QUESTIONS?