

## BYLAW NO. 19/016

### A BYLAW OF THE REGIONAL MUNICIPALITY OF WOOD BUFFALO TO AMEND THE LAND USE BYLAW NO. 99/059

WHEREAS Section 191(1) and 639 of the *Municipal Government Act* empower a council both to pass and to amend a land use bylaw.

**NOW THEREFORE** the Regional Municipality of Wood Buffalo, in council assembled, enacts as follows:

1. Land Use Bylaw No. 99/059 is amended as set out in sections 2 and 3 of this bylaw.
2. Section 10 is amended by adding the following definitions:

**CAPITAL PROJECT** means the construction, expansion, renovation or replacement of a capital asset; capital asset being structures, production plants, and equipment required to produce any goods or services. Examples of capital projects include but are not limited to production facilities, power plants, refineries and infrastructure projects such as pipelines, road/highway, railway or dam.

**EXPLORATION** means activities carried out to determine the presence of bitumen deposits which may involve test drilling, excavation, or other means of investigation, all of which result in surface disturbances.

**TURNAROUND** is the scheduled shutdown of processing units or plants for overhaul, maintenance, and repairs. Some operations may cease during this period and the focus is on maintenance related activities such as cleaning, inspection, and repairs.

**MAINTENANCE** refers to ongoing upkeep and repairs of portions of the industrial plant while the plant is still in operation.

3. Section 87 is amended by adding the following subsections:

87.9 In addition to the General Regulations in Part 5, the provisions set out in section 87.10 to 87.13 shall apply to the development of project accommodations wholly or partly in the restricted area shown on the map under section 87.13.

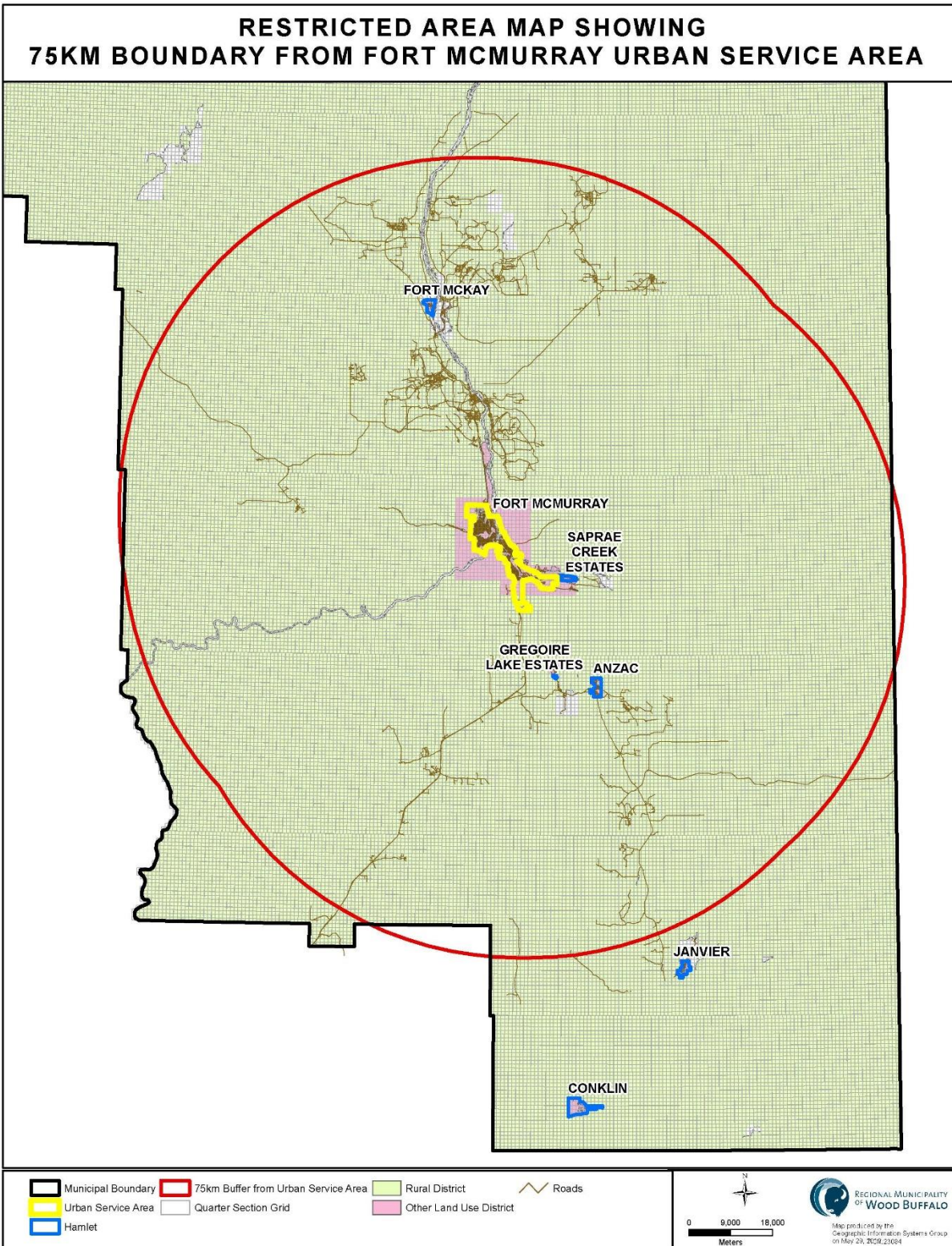
87.10 Project accommodations are not allowed in the restricted area shown on the map under section 87.13.

87.11 Despite section 87.10, project accommodations may be allowed in the restricted area shown on the map in section 87.13 if the project accommodation is being established for the purposes of Turnaround, Exploration, Maintenance or a Capital Project.

87.12 Despite section 87.10, project accommodations may be allowed in the restricted

area shown on the map under section 87.13 if they are not accessible by a road (including a winter road).

87.13 The following map shows the restricted area as per section 87.10



4. This Bylaw comes into force on the day it is passed.

READ a first time this \_\_\_\_\_ day of \_\_\_\_\_, 2019.

READ a second time this \_\_\_\_\_ day of \_\_\_\_\_, 2019.

READ a third time this \_\_\_\_\_ day of \_\_\_\_\_, 2019.

SIGNED and PASSED this \_\_\_\_\_ day of \_\_\_\_\_, 2019.

\_\_\_\_\_  
Mayor

\_\_\_\_\_  
Chief Legislative Officer