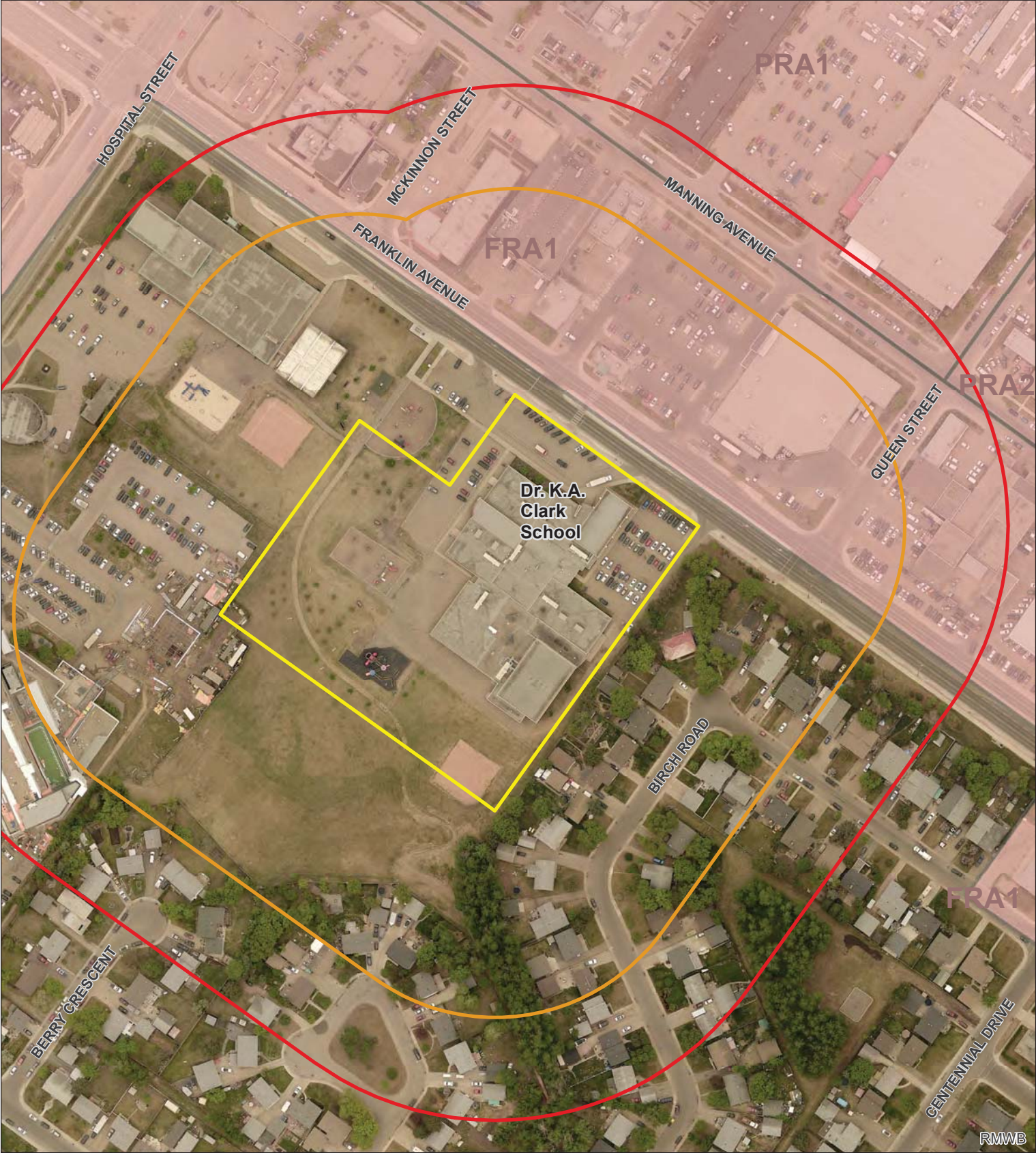






SUBJECT AREA MAP
Dr. K.A. Clark School and Childcare



-  Subject Area
-  Buffer 100m
-  Acceptable Commercial Cannabis Landuse Zoning
-  Buffer 150m



1 cm = 25 meters







REGIONAL MUNICIPALITY
OF WOOD BUFFALO

Map Produced for the Community
Development Planning Branch
TICK18760
14 Feb 2019

SUBJECT AREA MAP
École St. Paul



- | | | | |
|--|---|---|-------------|
|  | Subject Area |  | Buffer 100m |
|  | Acceptable Commercial Cannabis Landuse Zoning |  | Buffer 150m |

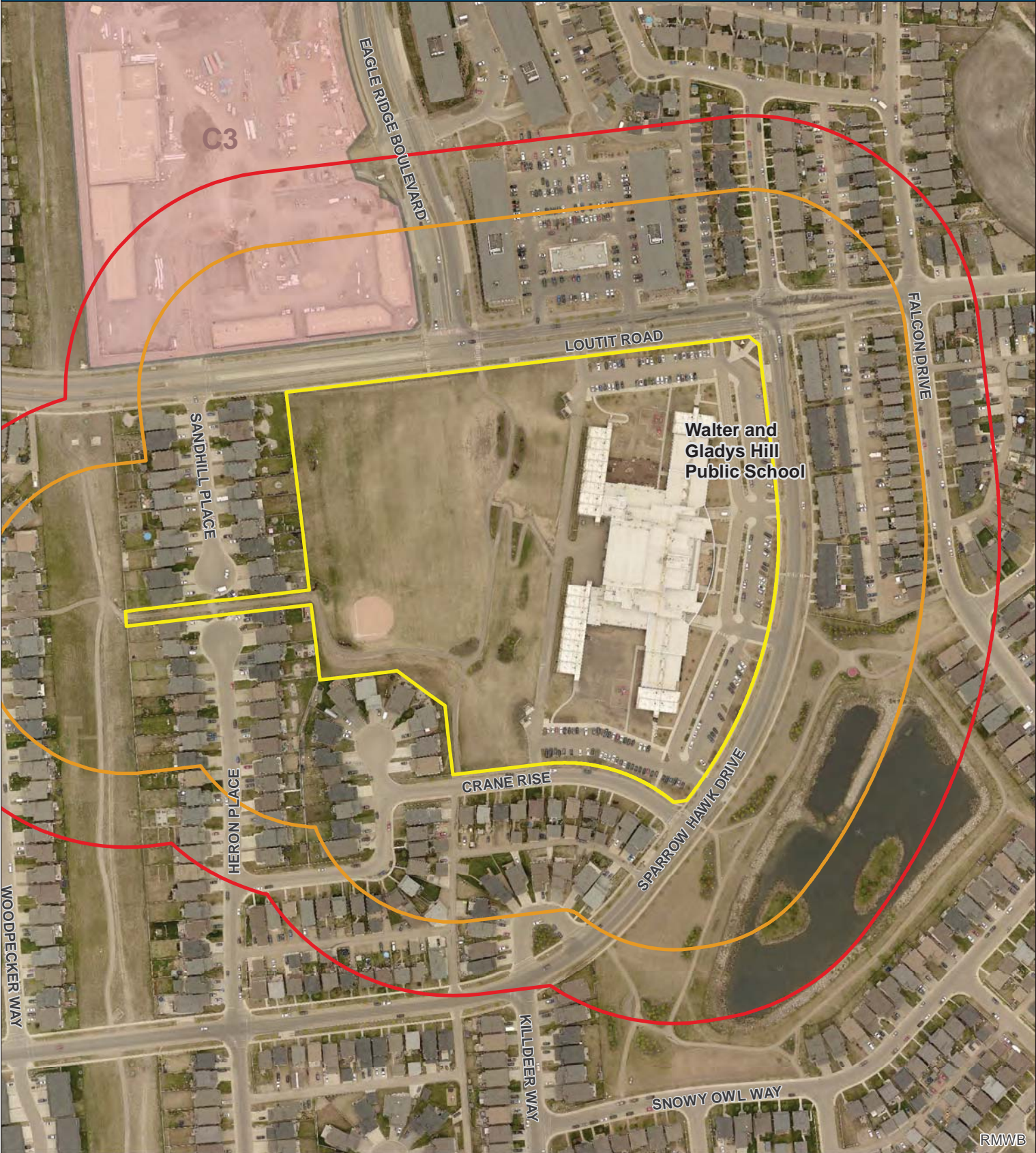


1 cm = 30 meters



REGIONAL MUNICIPALITY
OF WOOD BUFFALO

Map Produced for the Community
Development Planning Branch
TICK18760
14 Feb 2019

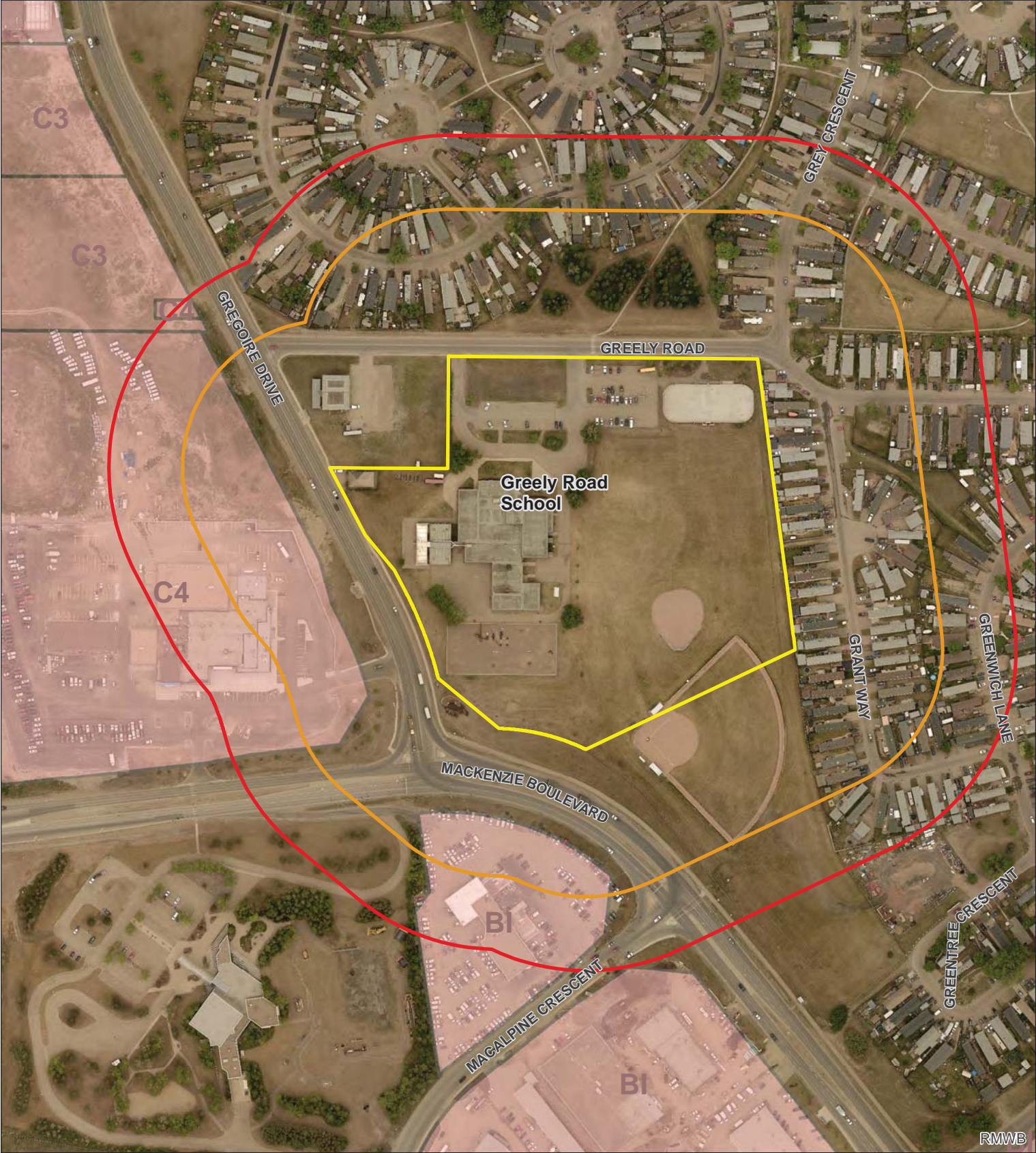


- Subject Area
- Buffer 100m
- Acceptable Commercial Cannabis Landuse Zoning
- Buffer 150m

N

1 cm = 35 meters

SUBJECT AREA MAP
Greely Road School



- Subject Area
- Acceptable Commercial Cannabis Landuse Zoning

- Buffer 100m
- Buffer 150m







1 cm = 35 meters



Map Produced for the Community
Development Planning Branch
TICK18760
14 Feb 2019

SUBJECT AREA MAP
Holy Trinity Catholic Jr/Sr High School



-  Subject Area
-  Buffer 100m
-  Acceptable Commercial Cannabis Landuse Zoning
-  Buffer 150m



1 cm = 31 meters



Map Produced for the Community
Development Planning Branch
TICK18760
14 Feb 2019