

Rural Water & Sewer Servicing

Presenter: Matthew Hough, Director

Department: Engineering

Meeting Date: November 27, 2018

Background

- The first step in the RWSS program is to build the force mains, lift stations, and additional infrastructure needed to provide piped water and sewer systems to the rural communities
- The next step is to connect our infrastructure from lot lines to residential homes (on-site service connections)
- The current budget allocated to the RWSS program has included:
 - Detailed design and construction of Municipal infrastructure
 - Development of standards for on-site service connections

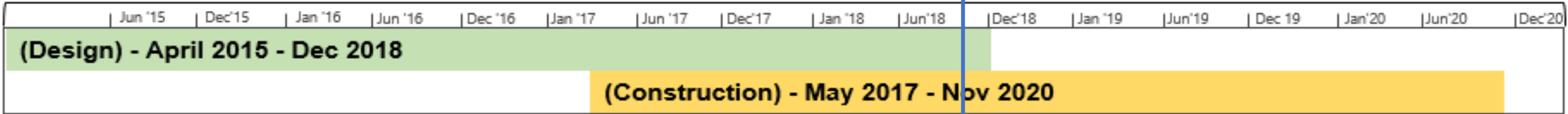
Steps taken by Administration

- Administration presented at Council on June 12, 2018 and received direction to return with improved service connection cost estimates. Since this time Administration has:
 - Engaged local contractors to assist with cost estimates
 - Engaged with all RWSS communities
 - Advanced the construction phase of the program

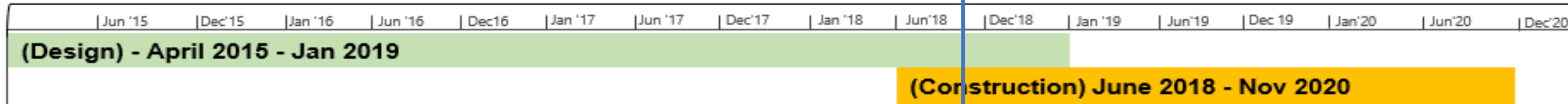
Design and Construction Schedule*

ANZAC, GREGOIRE LAKE ESTATES, SAPRAE CREEK

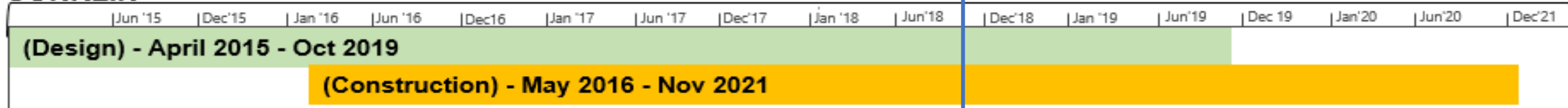
Today Nov 06, 2018



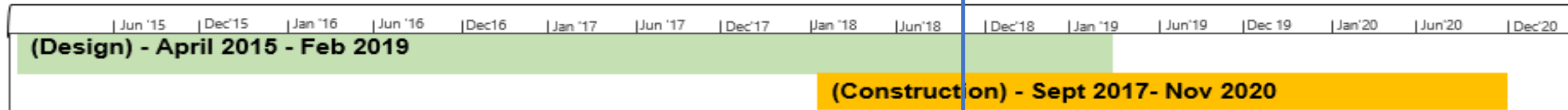
DRAPER



CONKLIN

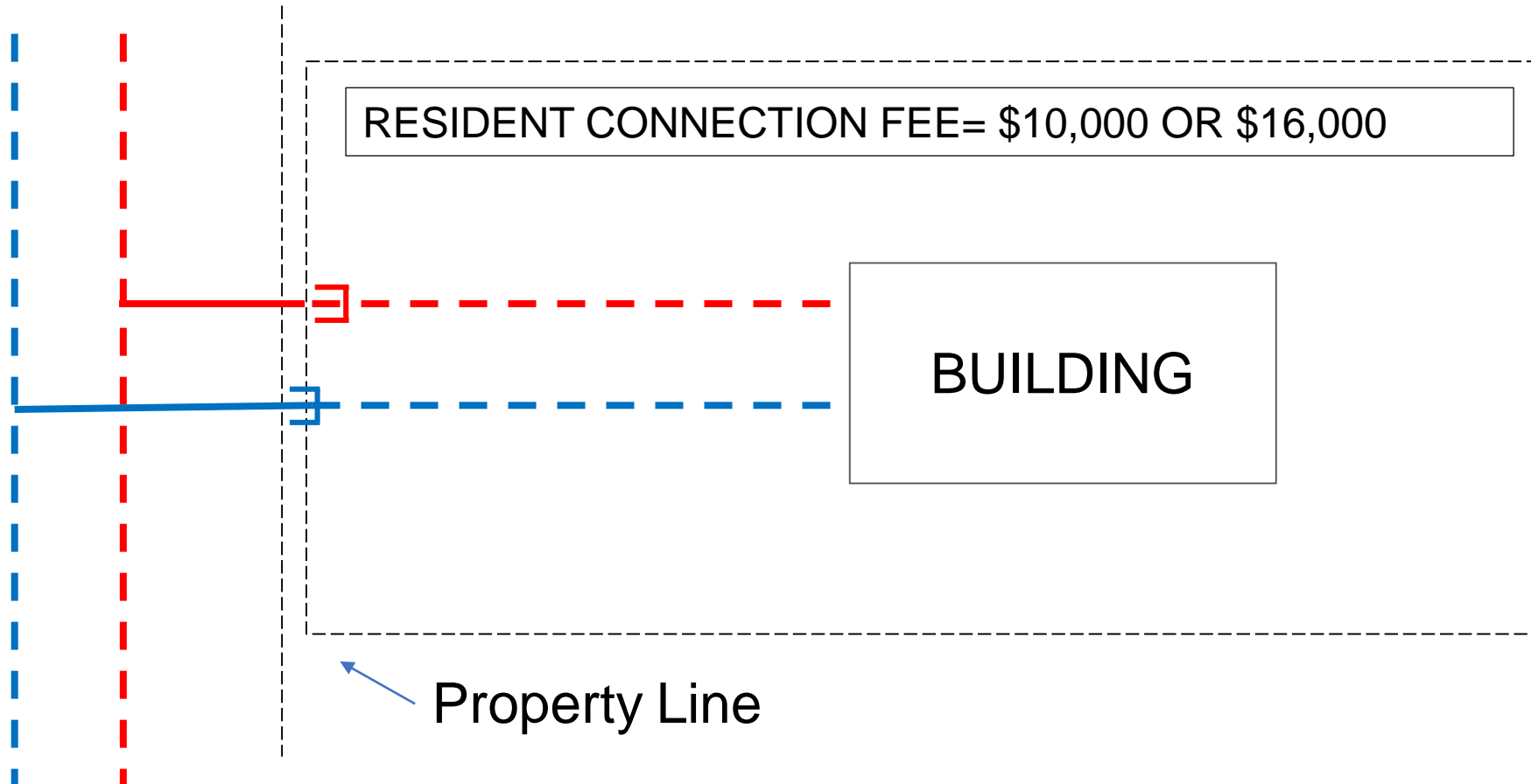


JANVIER



*Schedule only shows mainline design & construction (service connection schedule to follow)

On-Site Service Connection



Lot by lot Assessment

- The on-site service connection estimates from contractors came back higher than anticipated
- Administration would like to undertake a lot by lot assessment in Janvier, Conklin, Saprae Creek Estates, Gregoire Lake Estates and Anzac
- This approach will allow Administration to get detailed information on the scope of work needed by the Municipality per lot
 - Distance of pumps/tanks from the roadway
 - Electrical panel capacity
 - Pump/tank location to the home (inside, outside, front, back)
 - Impact on private properties (driveways, landscaping, secondary buildings)

On-Site Service Connection Plan

The on-site service connection plan will enable Administration to answer of the questions that remain regarding RWSS program:

- What will the resident pay for their on-site service connection?
- How will they pay their service connection fee?
- How long will they be able to participate in the RWSS program?
- How and by whom will the work be completed on their property?

Draper

Slope Instability

- Since our last meeting with the Draper residents we have received additional information regarding instability of the area
- The RWSS Draper design consultant has stated that any excavation into the unstable slope will increase the risk of slope failure
- Removing Draper from the RWSS construction budget will remove approximately \$13,000,000

Key Considerations

- Residents in Conklin can connect to RWSS starting in 2019
- Service connections need to be affordable, and the cost of connecting equitable, for a critical mass of residents to connect to the RWSS system
- Success and cost effectiveness of the system will be measured by how many residents connect
- There is high risk to both the Municipality and Draper residents in proceeding with the current design and timelines

Summary

- To prepare accurate cost estimates, a lot by lot assessment in Janvier, Conklin, Saprae Creek Estates, Gregoire Lake Estates and Anzac is needed
- Administration seeks Council's support to plan and make funding requests for service connections in 2019
- Administration continues to recommend that the resident contribution be \$16,000 (\$10,000 in Saprae Creek)