

Public Art Installation and Realignment of Water Aerodrome Departure Airway

Presenter: Manager, Recreation and Culture Branch

Department: Public Works and Transit Services

Meeting Date: June 12, 2018



Site Selection

- More than 200 residents attended public open houses at MacDonald Island Park in June 2015 to identify a preferred public art location for the first permanent public art installation in our region.
- Based on public feedback, the Public Art Committee selected the causeway at MacDonald Drive as the preferred site for a public art piece.

Site Selection

- Between November and December 2015, 1,100 people responded to a public survey to select artwork for the MacDonald Drive site.

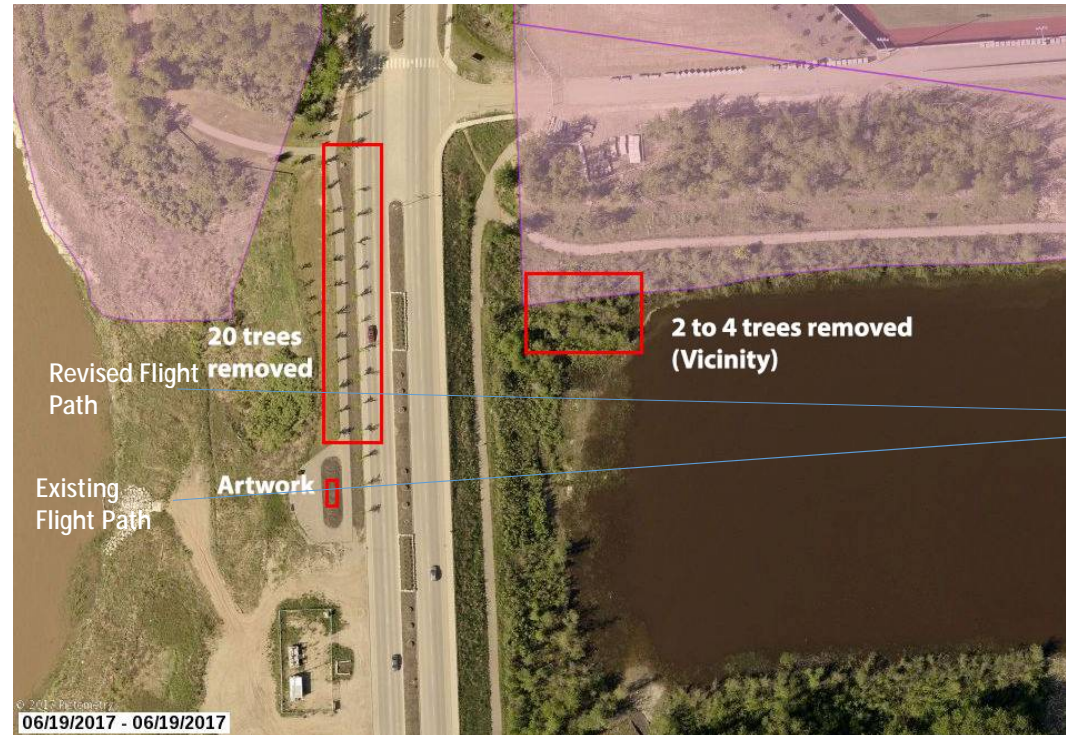


Key Site Considerations

- The site is in close proximity to the Water Aerodrome.
- A Land Use Evaluation has been approved from Navigation Canada.
- An Aeronautical Assessment for Obstruction Evaluation has been approved from Transportation Canada.
- Support from the local Aerodrome Operator (CES7) has been acquired.

Realignment of the Departure Airway

A maximum of 24 trees will be removed or relocated to alleviate safety concerns and provide a clear flight path in the event of an emergency descent.



Expenses to Date

- The total expenses spent to date on the MacDonald Drive site preparation is \$30,686. In addition, a total of \$202,382 has been paid to the artist for engineering and fabrication of the artwork designed for MacDonald Drive.