



## Wood Buffalo Waterfront Advisory Committee

Thursday, September 16, 2021

Conducted Electronically Via MS Teams

10:00 AM

---

### Agenda

#### Public Participation for September 16, 2021 Wood Buffalo Waterfront Advisory Committee

The Wood Buffalo Waterfront Advisory Committee (Committee) will be conducting the September 16, 2021 Meeting through electronic communications in accordance with the Meeting Procedures (COVID-19 Suppression) Regulation, Order in Council 99/2020.

- Anyone wishing to participate in the meeting is encouraged to do so by registering to speak as a delegate by way of teleconference or by submitting their delegation comments by email.
- To participate by teleconference:
  - Anyone wishing to speak by teleconference to an item on the Wood Buffalo Waterfront Advisory Committee Agenda must pre-register by 4:00 p.m. on September 15, 2021.
  - To register to speak via teleconference, please email [boardsandcommittees@rmwb.ca](mailto:boardsandcommittees@rmwb.ca) or call 780-743-7001 with your name, the phone number that you will be dialing in from and an email address that you can be reached at prior to and during the meeting.
  - You must provide the name of the agenda item that you wish to speak to.
  - All registrants will be emailed the details on how to participate prior to the start of the meeting.
  - Each registrant will be given a maximum of **5 minutes** to address the Committee.
- To make written submissions as a delegation before or during the live meeting:
  - Please complete the online form found at [www.rmwb.ca/writtendelegations](http://www.rmwb.ca/writtendelegations) or email [boardsandcommittees@rmwb.ca](mailto:boardsandcommittees@rmwb.ca)
  - Please note that written comments for an agenda item must be received prior to the start of that item during the meeting. Emails that are received after the agenda item has been introduced or are not relevant to an agenda item, will not become part of the record of this meeting.
  - All written submissions are public and will be included in the Committee Meeting Agenda Package as part of public record.

---

The personal information on this form is collected under the authority of Section 33 (a) & (c) of the Alberta Freedom of Information and Protection of Privacy Act. The personal information will be used as contact information. If you have any questions about the collection or use of this information contact the Chief Legislative Officer, Legislative Services, 7<sup>th</sup> Floor Jubilee Building, 9909 Franklin Ave. T9H 2K4, or call (780) 743-7001.

**1. Call to Order**

**2. Adoption of Agenda**

**3. Minutes of Previous Meetings**

3.1. Wood Buffalo Waterfront Advisory Committee Meeting - June 17, 2021

**4. Presentation**

4.1. Josh Bernsen, Owners Representative, Gregg Kahan, Urban Systems, Jennifer Comrie, Urban Systems and Yvonne Bautista, DTAH re: Waterfront Park Project Preferred Concept Priority 2 Area

4.2. Megan Langille, Strategist, Communications and Engagement re: Waterfront Park Project Engagement Update

**5. New and Unfinished Business**

5.1. Flood Mitigation Update

5.2. Grant Funding Application Update

5.3. Wayfinding Plan Development Update

5.4. Roundtable

**Adjournment**

**Minutes of a Meeting of the Wood Buffalo Waterfront Advisory Committee held via Electronic Communications in Fort McMurray, Alberta, on Thursday, June 17, 2021, commencing at 10:00 AM.**

**Present:**

Gaylene Weidlich, Chair, Community Development Sector  
 Erica Brewer, Recreation Representative  
 Andrew Crompton, Oil and Gas Industry  
 Gary Devison, Seniors Representative  
 Cathy Dreier, Public-At-Large  
 Bill Loutitt, Indigenous Representative  
 Keith Plowman, Business Community  
 Sean Robertson, Safety and Security Sector  
 David Stirling, Public-At-Large  
 Liana Wheeldon, Culture (Arts, Culture & Heritage)  
 Krista Balsom, Councillor

**Absent:**

Alan Gammon, Land Development Industry  
 Phil Meagher, Councillor

**Administration:**

Matthew Hough, Deputy Chief Administrative Officer  
 Kelly Hansen, Director, Strategic Planning and Program Management  
 Dennis Warr, Director, Engineering  
 Nina Caines, Senior Manager, Parks, Roads and Rural Operations  
 Amanda Haitas, Senior Manager, Planning and Development  
 Monica Lance, Manager, Special Projects  
 Sonia Soutter, Manager, Senior Legislative Officer  
 Anita Hawkins, Legislative Officer  
 Caitlin Sheaves, Clerk, Legislative Services

**1. Call to Order**

Gaylene Weidlich, Chair, called the meeting to order at 10:03 a.m.

**2. Adoption of Agenda**

**2.1. MOTION:**

That the Agenda be adopted as presented.

**RESULT:** CARRIED [UNANIMOUS]  
**MOVER:** Liana Wheeldon  
**SECONDER:** David Stirling  
**FOR:** Wheeldon, Weidlich, Robertson, Plowman, Devison, Brewer, Stirling  
**ABSENT:** Gammon, Crompton, Loutitt, Dreier

### 3. Minutes of Previous Meetings

#### 3.1. Wood Buffalo Waterfront Advisory Committee Meeting - May 20, 2021

#### 3.2. Special Wood Buffalo Waterfront Advisory Committee Meeting - May 27, 2021

THAT the minutes of the Wood Buffalo Waterfront Advisory Committee meetings held on May 20, 2021 and May 27, 2021 be approved as presented.

**RESULT:** CARRIED [UNANIMOUS]  
**MOVER:** Gary Devison  
**SECONDER:** David Stirling  
**FOR:** Wheeldon, Weidlich, Robertson, Plowman, Devison, Brewer, Stirling  
**ABSENT:** Gammon, Loutitt, Dreier, Crompton

### 4. Presentation

#### 4.1. Kyle Gomez, Seham Ahmed; Mayors Advisory Council on Youth re: Mayors Advisory Council on Youth (MACOY) Needs Assessment Update

Seham Ahmed, member of the Mayor's Advisory Council on Youth, presented an overview of the MACOY Needs Assessment Update results which included the need for additional youth geared spaces, additional volunteer and community engagement opportunities and additional post-secondary opportunities. It was also noted that survey results indicate that youth in the community prefer the downtown area as a focus area for redevelopment.

#### 4.2. Josh Bernsen, Lees and Associates; Gregg Kahan, Urban Systems and James Roche, DTAH, re: Waterfront Park Project Update

Josh Bersen, Lees and Associates introduced the presentation, Yvonne Battista, Greg Kahan and Jennifer Comrie, DTAH, provided an overview of the Waterfront Priority Area 2. Various design concepts and themes were reviewed for multiple areas of the Waterfront. The Committee provided their preferred design concepts and provided feedback on the various sites along the Waterfront.



Entrances and Exit:

Cathy Dreier, Committee Member, joined the meeting at 10:29 a.m.

Bill Loutitt, Committee Member, joined the meeting at 10:37 a.m.

Andrew Crompton, Committee Member, joined the meeting at 10:42 a.m.

Bill Loutitt, Committee Member, disconnected from the meeting at 11:00 a.m.

**5. New and Unfinished Business****5.1. Public Art Plan and Public Art Workplan Updates**

Karen Puga, Lead Coordinator, Community and Protective Services, advised that the Wood Buffalo Public Art Plan was approved by Council at their May 25, 2021 meeting. A brief update was provided on the Indigenous Art Curator, slated projects for Franklin and Main Park and the Moccasin Flats Memorial.

**5.2. Summer Meeting Schedule**Exit and Return:

Liana Wheeldon, Committee Member disconnected and re-connected to the meeting at 11:21 a.m.

**MOTION:**

THAT the regular Wood Buffalo Waterfront Advisory Committee Meetings for the months of July and August 2021 be cancelled.

<b>RESULT:</b>	<b>CARRIED [UNANIMOUS]</b>
<b>MOVER:</b>	Erica Brewer
<b>SECONDER:</b>	Liana Wheeldon
<b>FOR:</b>	Wheeldon, Dreier, Weidlich, Robertson, Plowman, Devison, Crompton, Brewer, Stirling
<b>ABSENT:</b>	Gammon, Loutitt

Gaylene Weidlich, Chair, noted that a Special meeting of the Committee would be scheduled should any emergent issues arise following the cancellation of the July and August meetings.

**5.4. Roundtable**

Keith Plowman, Committee Member, requested a status update on the Snye Point construction currently taking place.

Stephen Fudge, Manager, Public Works, advised that the current construction is to repair some of the flood damages, and improve the space for public use.

## Adjournment

The meeting adjourned at 11:28 a.m.

---

Chair

# FORT McMURRAY WATERFRONT PARK REVITALIZATION PROJECT

**Preferred Concept  
Priority Area 2**





# PROJECT BOUNDARY

## SNYE POINT OUTDOOR EVENT SPACE



## WATERFRONT PARK



Attachment: Fort McMurray Waterfront Park Revitalization Project (Waterfront Park Project Update)



REGIONAL MUNICIPALITY  
OF WOOD BUFFALO

URBAN  
SYSTEMS

dtah



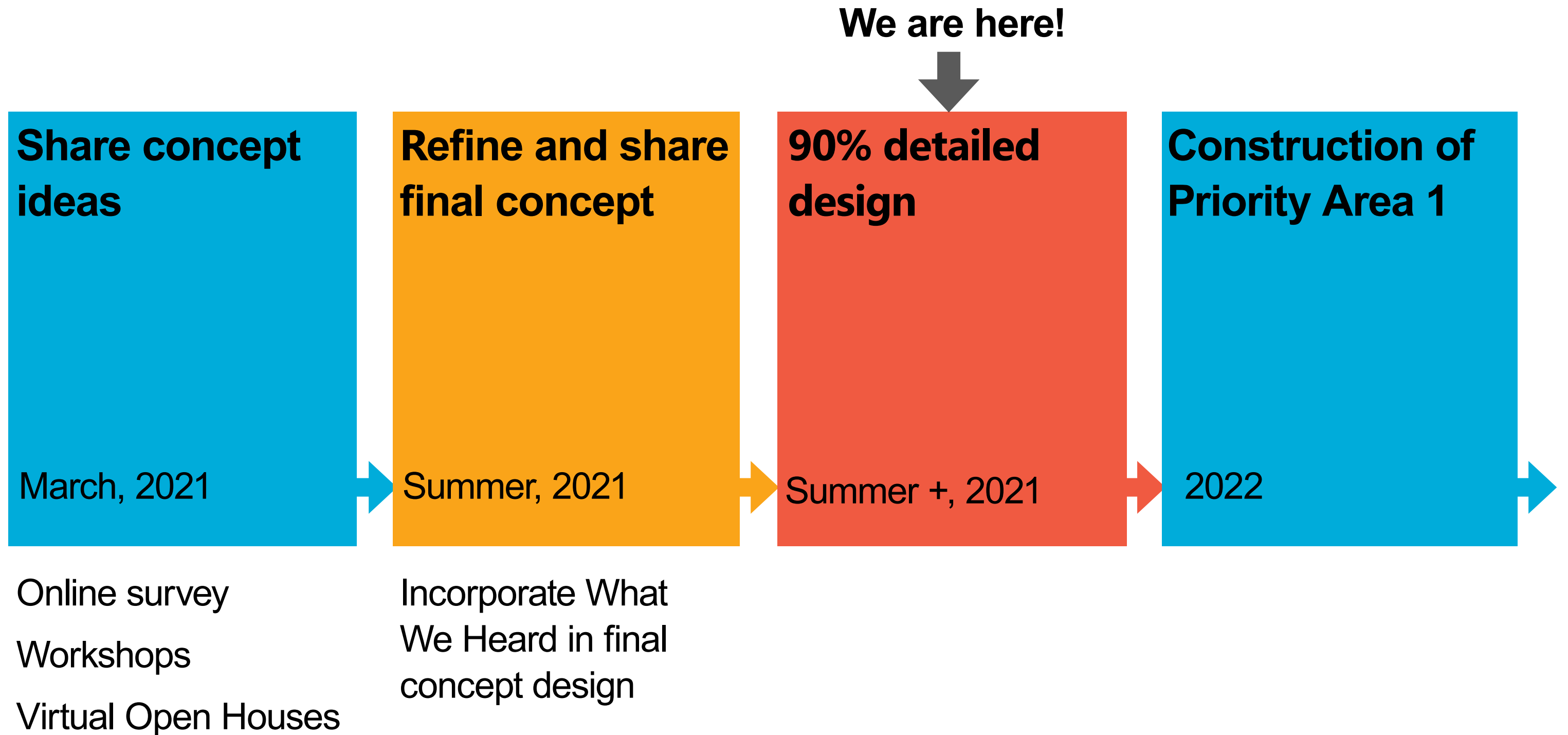
# WATERFRONT PARK PURPOSE



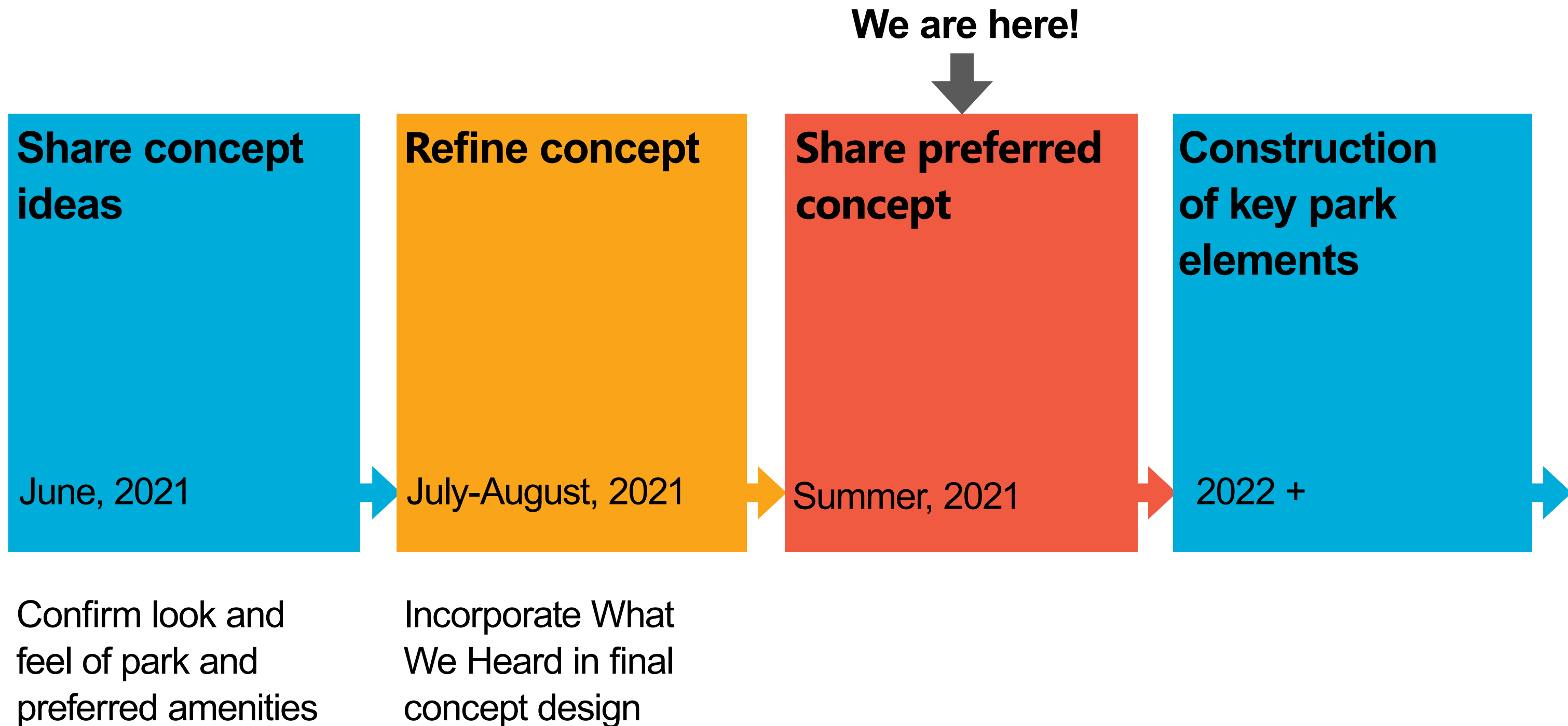
- Provide a public space for all to enjoy for generations to come.
- Opportunity to create a park that connects the downtown to the waters edge.
- Provide connections to the water - both visually and physically.
- Create unique park experiences that include:
  - Naturalized environments
  - Plaza connections to streets to create a physically accessible park space with broader visual connection to the park and water
  - Event spaces (Snye Point Outdoor Event Space and smaller flexible use areas)



# PRIORITY AREA 1 SCHEDULE UPDATE



# PRIORITY AREA 2 SCHEDULE



# AGENDA

1. WATERFRONT PARK - FLOOD MITIGATION
2. CONSISTENT PARK ELEMENTS
3. CHARACTER AREAS AND PREFERRED CONCEPT
4. NEXT STEPS + DISCUSSION

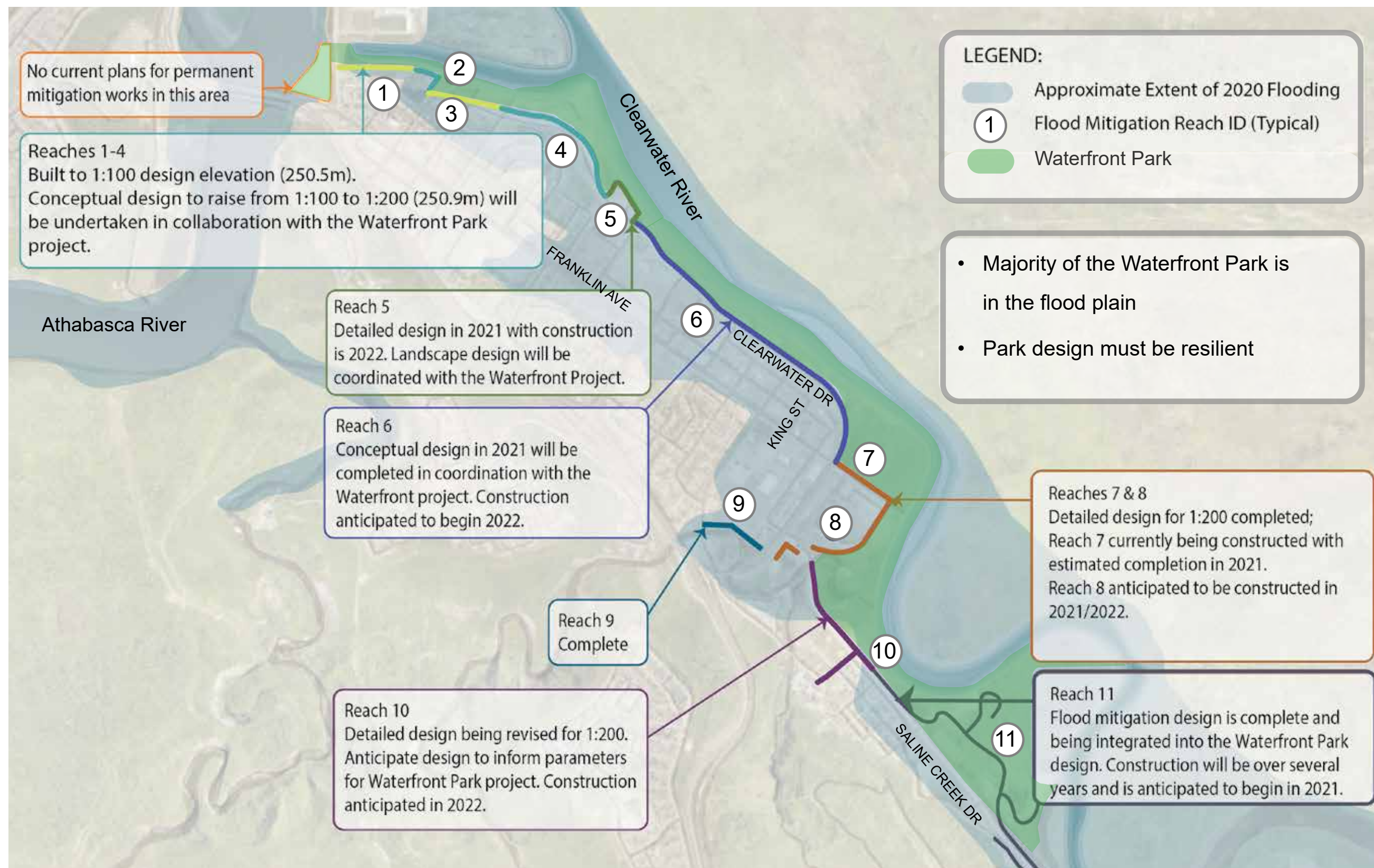




# WATERFRONT PARK: FLOOD MITIGATION



# RMWB FLOOD MITIGATION



# WATERFRONT PARK: CONSISTENT PARK ELEMENTS





# WATERFRONT GUIDING PRINCIPLES

- **Represent the larger diverse community** supporting placemaking and placekeeping **Passive four-season waterfront**
- **Key waterfront destinations**
- **Continuous multi-use path** with **integrated cultural and recreational opportunities**
- **Touch the water**
- **Integrated public art**
- **Strengthen flood mitigation**
- **Incorporate past guiding documents**
- **Respectful collaboration to represent Indigenous communities** and **integrated cultural celebration**
- **Work collaboratively** with public, stakeholders, an Indigenous communities and partners



Attachment: Fort McMurray Waterfront Park Revitalization Project (Waterfront Park Project Update)



# PRIORITY AREA 1 CONTINUITY

1. Indigenous Culture
2. Signage + Wayfinding including English, Cree, Dene and Michif
3. Accessible pathways with seating
4. Play / Activation Opportunities
5. Discovery Moments
6. Pedestrian Connections to Downtown
7. Vehicular Connections
8. Vendor opportunities
9. Support Flood Protection + Resilient Design





# WHAT WE HEARD

**Top 5 "New Activities" respondents want to see in the Waterfront Park:**

- 1. Benches and places to sit (507 responses)**
- 2. Washrooms (482 responses)**
- 3. Lookout points (467 responses)**
- 4. More accessible pathways (455 responses)**
- 5. Gathering spaces/plazas connected to pathways (443 responses)**



Attachment: Fort McMurray Waterfront Park Revitalization Project (Waterfront Park Project Update)

# WHAT WE HEARD

### Favourite part about the waterfront:









# EVENT SPACE HIERARCHY



## 1. The Great Lawn

- Main large event venue
- Formal design / event space
- Event power + reinforced turf

## 2. The Clearing @ Horse Pasture

- Event power
- Secondary large events
- Casual event space
- Iconic shade structure

## 3. Hospital + King + Marshall Plaza

- Smaller events
- Event power + hard surface
- Formal or informal event space
- Limited parking in park

## 4. Flexible Space

- No event infrastructure but supportive of a large and medium events and supports vendors





# CELEBRATE WHAT WE HAVE



- Existing Mature Woodlots
- Reforest Areas
- \* Modified Water's Edge

- Maintain the existing waters edge as much as possible.
- Respectfully alter the waters edge with flooding and ice impacts in mind.
- Maintain existing multi-use paths and park amenities where possible.
- Minimize impacts on existing mature woodlots.
- Reforest areas affected by flood mitigation work and fire.
- Include meadows with pollinator species and habitat opportunities.



# INDIGENOUS CULTURE



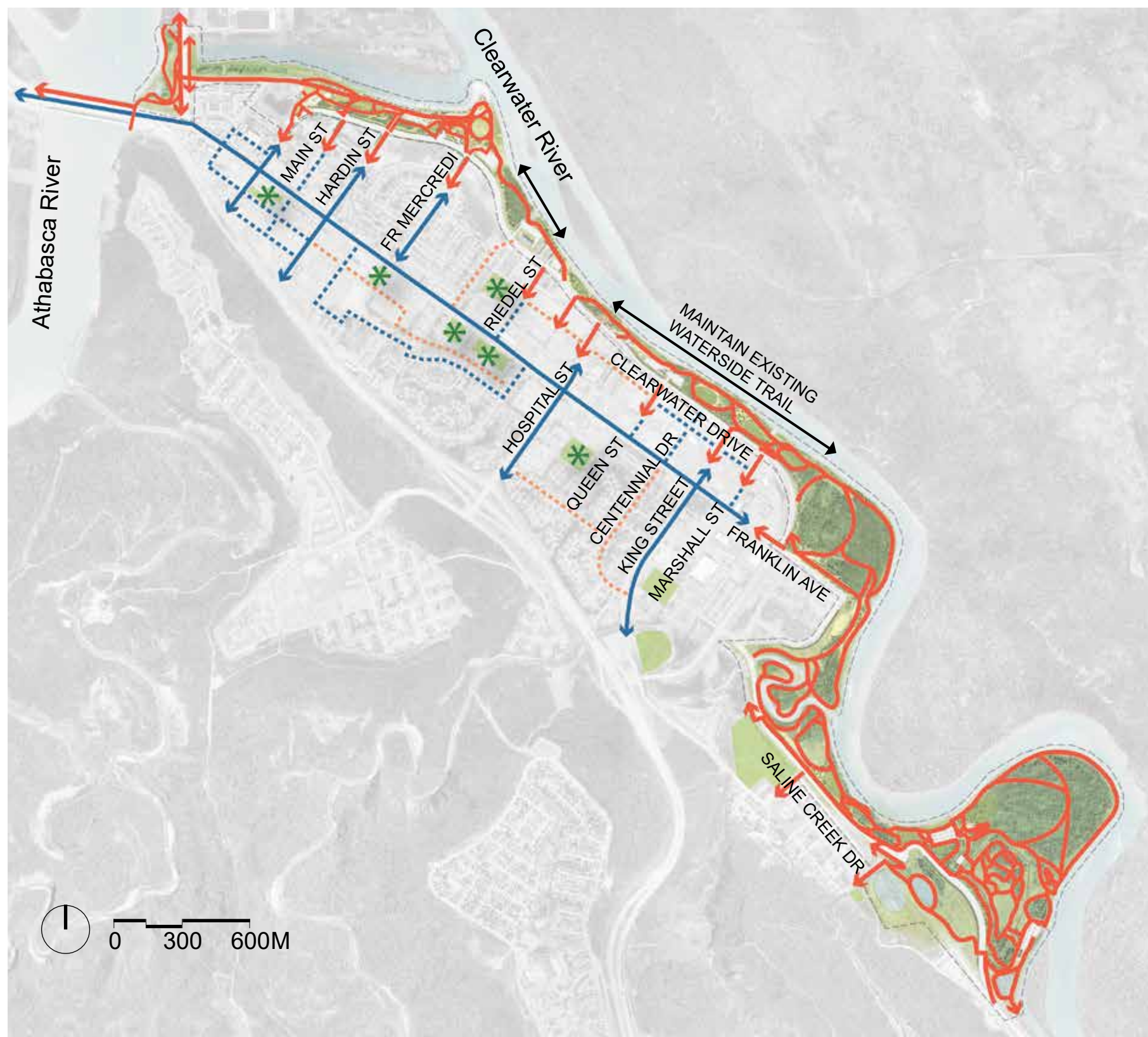
- Marker Poles
- Welcome Circles
- ✱ Major signage and wayfinding

- Marker Poles that include Indigenous culture and history.
- Welcome circles to support events, ceremonies, formal / informal gathering etc.
- Major signage and wayfinding that include history and storytelling in Cree, Dene, Michif and English.
- Minor signage to be incorporated throughout the waterfront with culturally significant plant material, animal tracks and local knowledge.





# PEDESTRIAN CONNECTIONS



- ↔ Proposed Pedestrian Connections
- ⋯ Proposed Pedestrian Improvements
- ↔ Proposed Downtown Streetscape Improvements
- ⋯ Proposed District Streetscape Improvements
- \* Proposed Park Improvements
- Existing Parks

- Continued coordination with the Downtown Area Redevelopment Plan
- Continuous street and waterside pedestrian connections.
- While the Priority 2 concepts differ, they will both provide the same pedestrian connection opportunities.



# SIGNAGE + WAYFINDING

**Miyo nakiskawâw (Michif)** *it is good to be meeting you*

**Tawâw (Cree)** *come in / welcome*

**Ho?ą (Dene)** *welcome*

INCLUDE MICHIF,  
CREE AND DENE  
LANGUAGE.

SIGNAGE DESIGN  
AND CONTENT TO  
BE DEVELOPED.

## Street Marker Poles

Park connection to  
town + water

## Wayfinding

Regional + local maps

## Signage

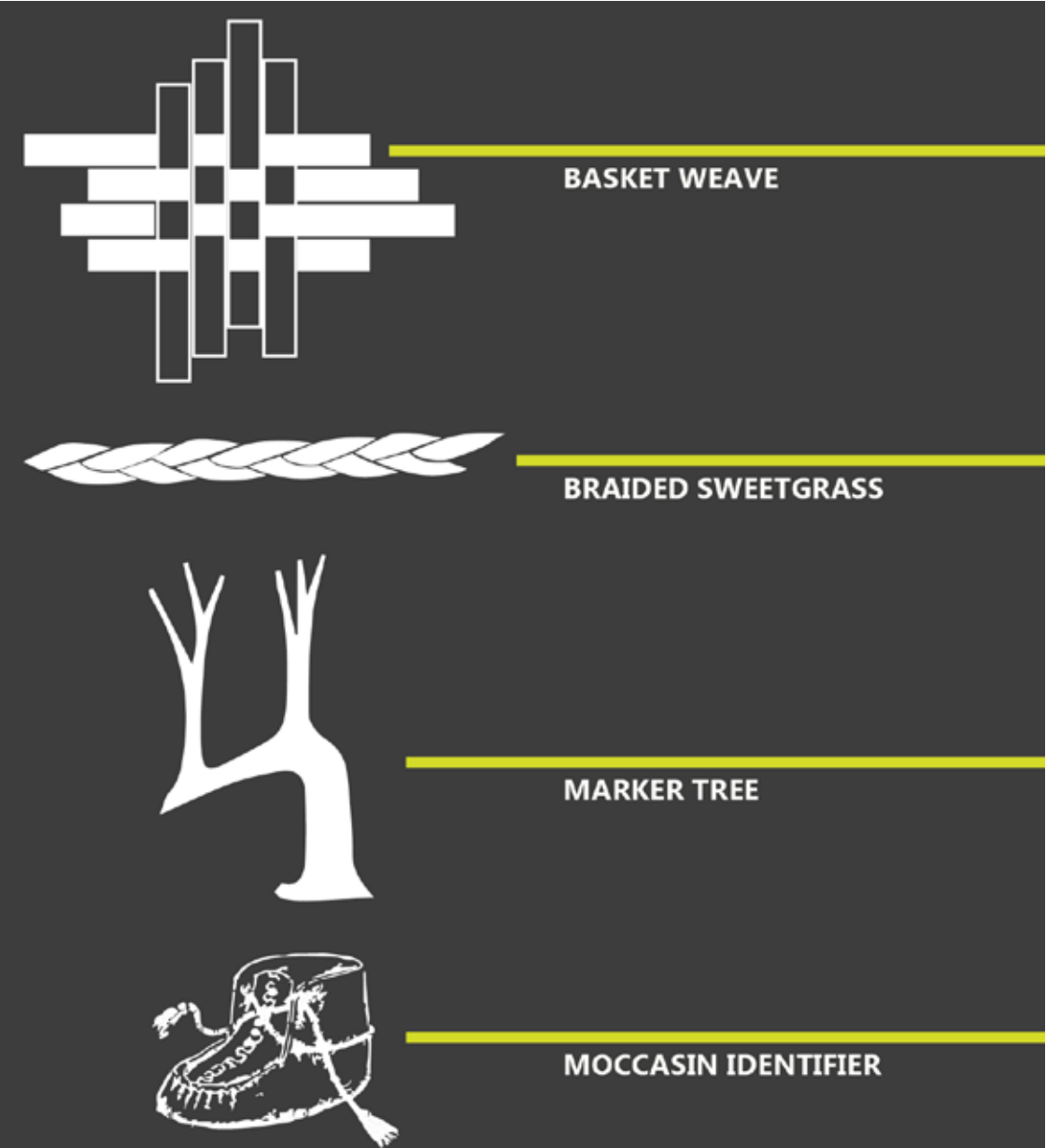
Storytelling, history +  
looking to the future

## Sharing Information

Plants, animals + the  
environment



# PAVEMENT MARKINGS



Example Graphic Pavement Markings



Pavement Markings on Asphalt

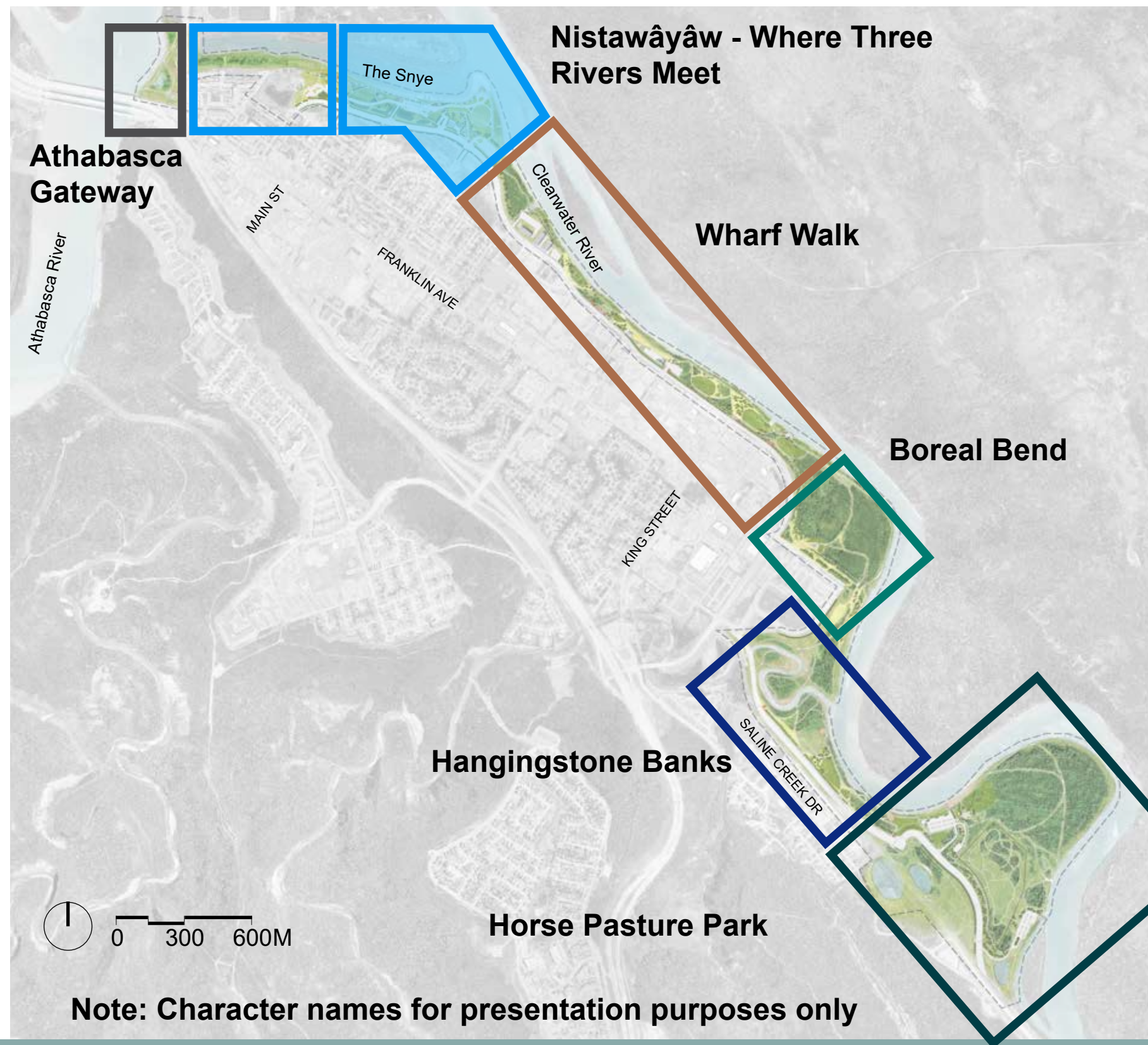
Attachment: Fort McMurray Waterfront Park Revitalization Project (Waterfront Park Project Update)

# CHARACTER AREAS AND CONCEPT DESIGN

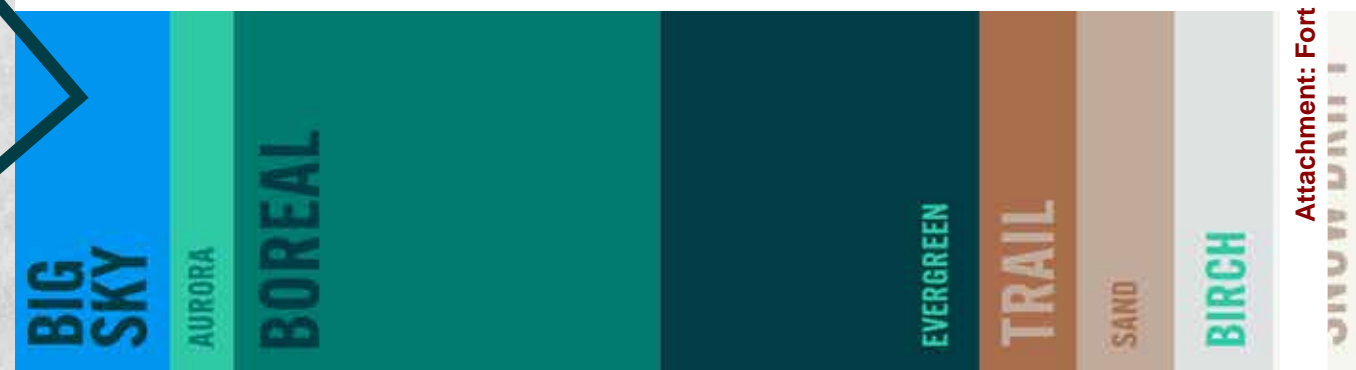




# WATERFRONT CHARACTER AREAS

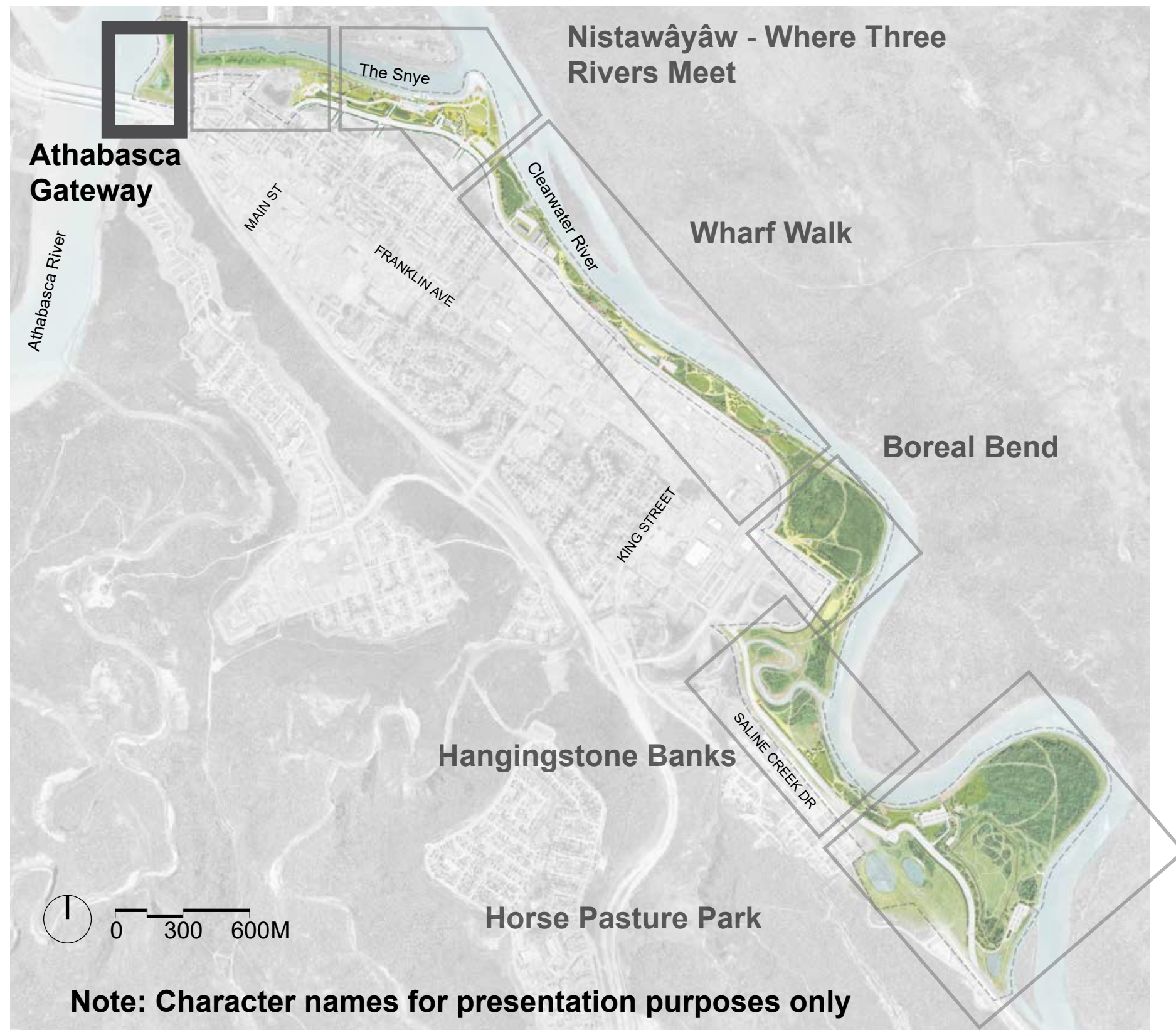


- Indigenous Communities and Cultural Significance
- Athabasca, Clearwater and Snyc Rivers
- Gateway to the North - shipping / river / rail / aviation
- Settlers / Fur Trade / Hudson's Bay Co.
- Industry / Oil Sands / Innovation
- Northern Nature - Northern Lights, Boreal Forest, Lakes, Sand Dunes, Flora, Fauna
- Resilience - flooding, fire, winter climate
- Regional Connections - rural hamlets, IC's, tourism opportunities





# ATHABASCA GATEWAY



- Regional transportation and sustenance - Indigenous river use, winter roads, frozen river, barging to Fort Chipewyan
- Gateway to the North
- Original Fort - settlers / fur trade / Hudson's Bay Company
- Athabasca Valley
- Causeway history
- Connection to the Snye and MacDonald Island
- Breathtaking views
- Connection to Fox Trail / Total Trail and future Métis Cultural Centre





# ATHABASCA GATEWAY



- Provide pedestrian connection from Athabasca Gateway east to the remainder of the waterfront park
- Multi-use trails to connect to existing trails, sidewalks and Fox / Total Trail and future Métis Cultural Centre
- Provide opportunities to enjoy the Athabasca Valley through many different seating opportunities, accessible multi-use trails and existing sculpture
- Provide maintenance and safety access





# ATHABASCA GATEWAY - LOOKING NORTH





# ATHABASCA GATEWAY

accessible multi-use trails  
connecting to Athabasca  
Bridge and pedestrian path

Reflections on the River

marker pole location

stone steps to the water



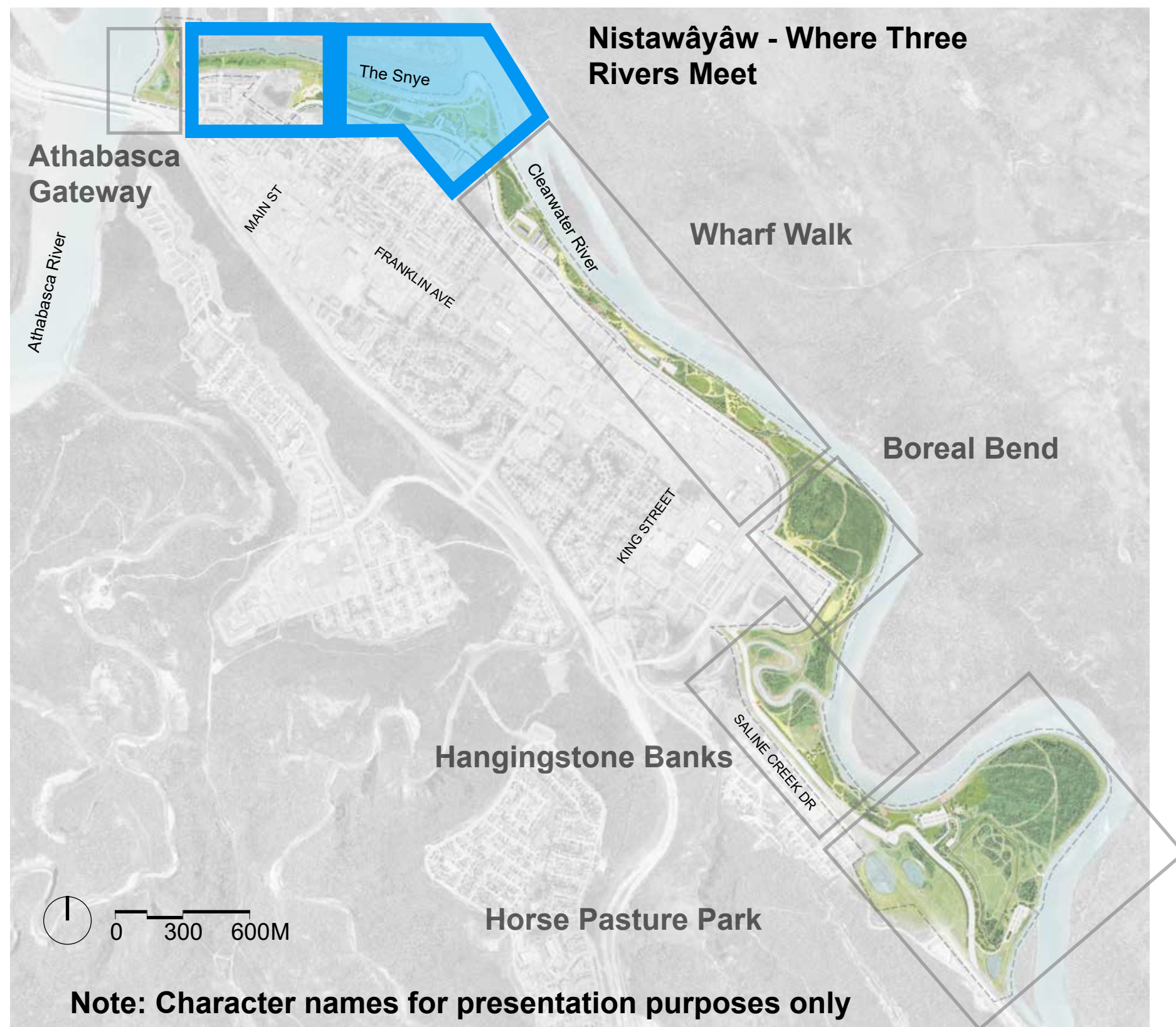
REGIONAL MUNICIPALITY  
OF WOOD BUFFALO

URBAN  
SYSTEMS

dtah



# NISTAWÂYÂW



- Indigenous strength - rich history, Moccasin Flats, signing of adhesion to Treaty 8
- Celebration venue
- Family connections - WinterPLAY
- Regional destination
- Signage and wayfinding incorporate storytelling, history and larger region
- Aviation - bush pilots, Punch Dickins Memorial
- Ice Jam Flooding - flood protection
- Toboggan hill
- Touch the water



# NISTAWÂYÂW: EXISTING MULTI-USE

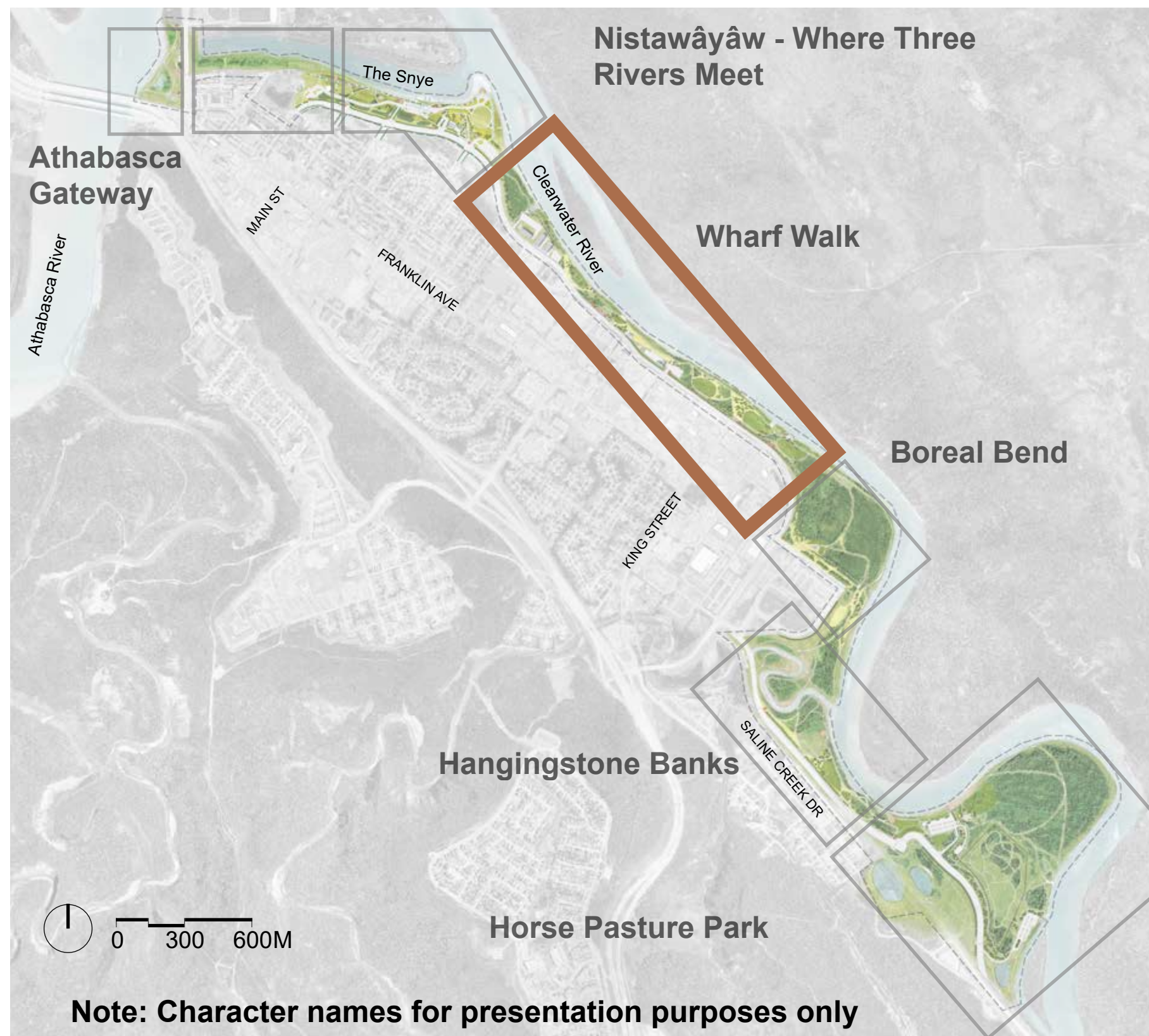


- Coordination with Moccasin Flats Memorial
- Include signage and wayfinding
- Add flood mitigation





# WHARF WALK



- Regional transportation hub - remnant wharfs, paddle wheelers, uranium trade, access to the north
- Marine Park
- Industry, innovation, shipping, minerals
- Oil Sands
- Resilience - flooding and winter climate
- Indigenous communities and culture - trap lines, fishing, sustenance, boat operation
- Connection to other regional tourism - Heritage Park, Oil Sands Discovery Centre, Giants of Mining Exhibit, Syncrude's bison heard
- Support aging-in-place





# WHARF WALK

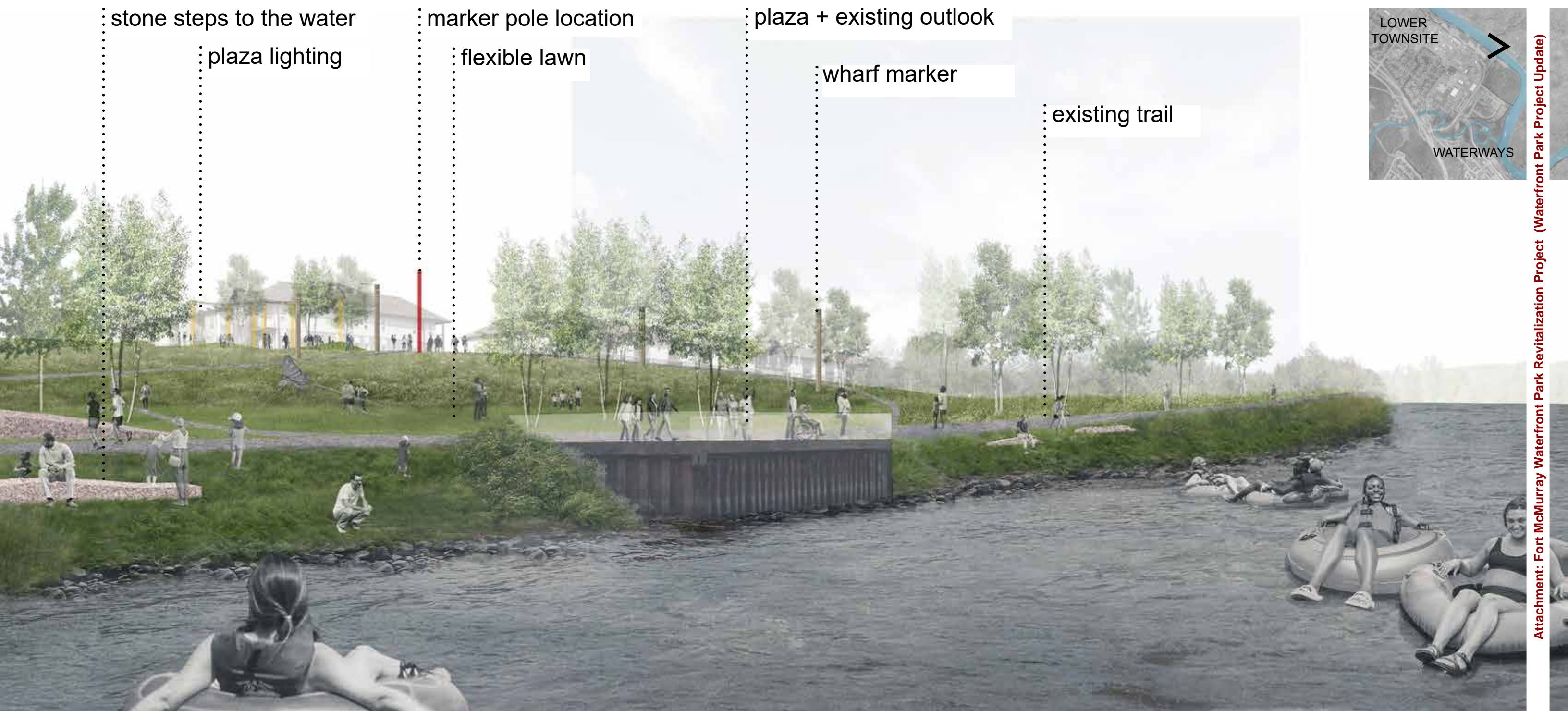


- Park design and flood mitigation work to be coordinated
- Provide barrier free connection from downtown to waters edge
- Series of flexible open spaces, habitat meadows and new reforestation areas
- Small plaza areas along Clearwater Drive provide viewing platforms to the waterfront and a comfortable accessible connection to the park
- Maintain existing multi-use path where possible
- Celebrate wharf structures and waterway history





# PLAZA AT MARSHALL ST



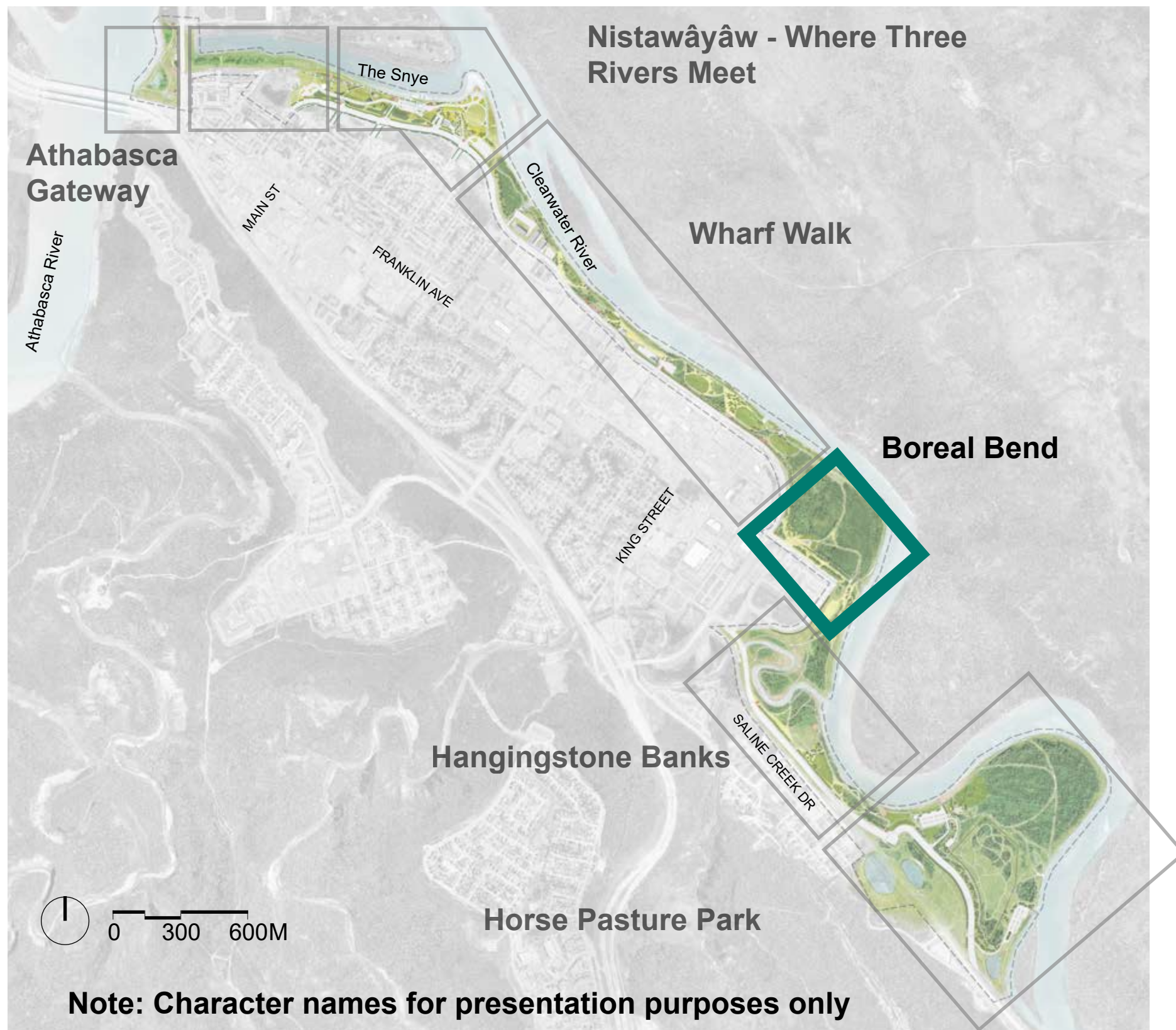


# PLAZA AT MARSHALL ST





# BOREAL BEND



- Northern Nature - Northern Lights viewing opportunity, boreal forest with mature growth, fauna / flora
- Passive scavenger hunt for WB animals along park network
- Indigenous culture - trap lines, fishing, connection to the water
- Flexible space
- Opportunity for play





# BOREAL BEND



- Limit new multi-use pathways through existing mature woodlot
- Clearing to be constructed in existing clearing in woodlot
- Connect woodlot trails to waters edge trails, Clearwater Drive multi-use trail and flood protection trails
- Reforest areas impacted by flood mitigation construction
- Provide visual tree buffering from flood protection trails to residential homes

Attachment: Fort McMurray Waterfront Park Revitalization Project (Waterfront Park Project Update)



REGIONAL MUNICIPALITY  
OF WOOD BUFFALO

URBAN  
SYSTEMS

dtah



# BOREAL BEND LOOKOUT





# BOREAL BEND PARKOUR





# BOREAL BEND IN WINTER



existing mature forest

seating

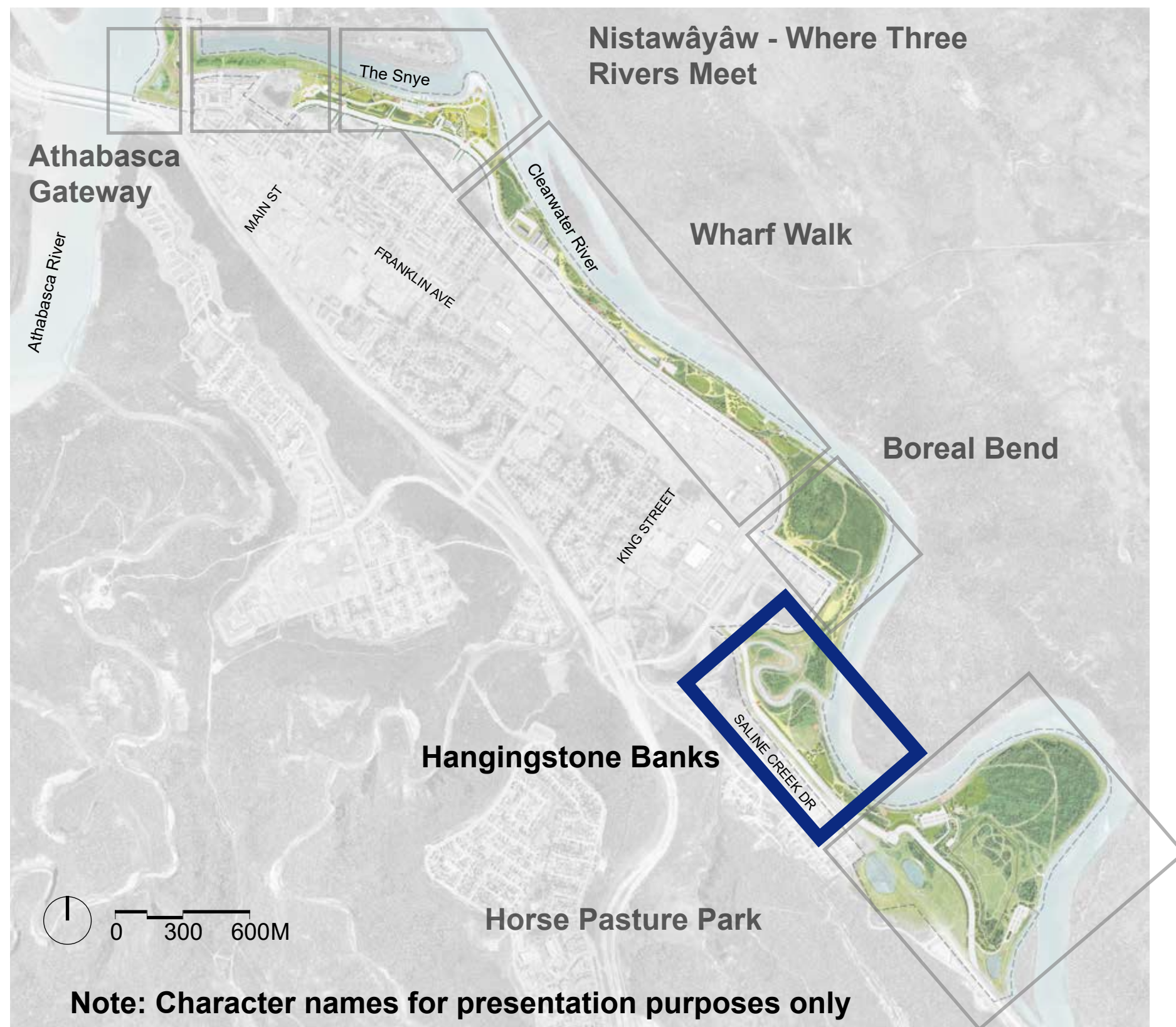
performance platform /  
open seating

accessible  
multi-use path





# HANGINGSTONE BANKS

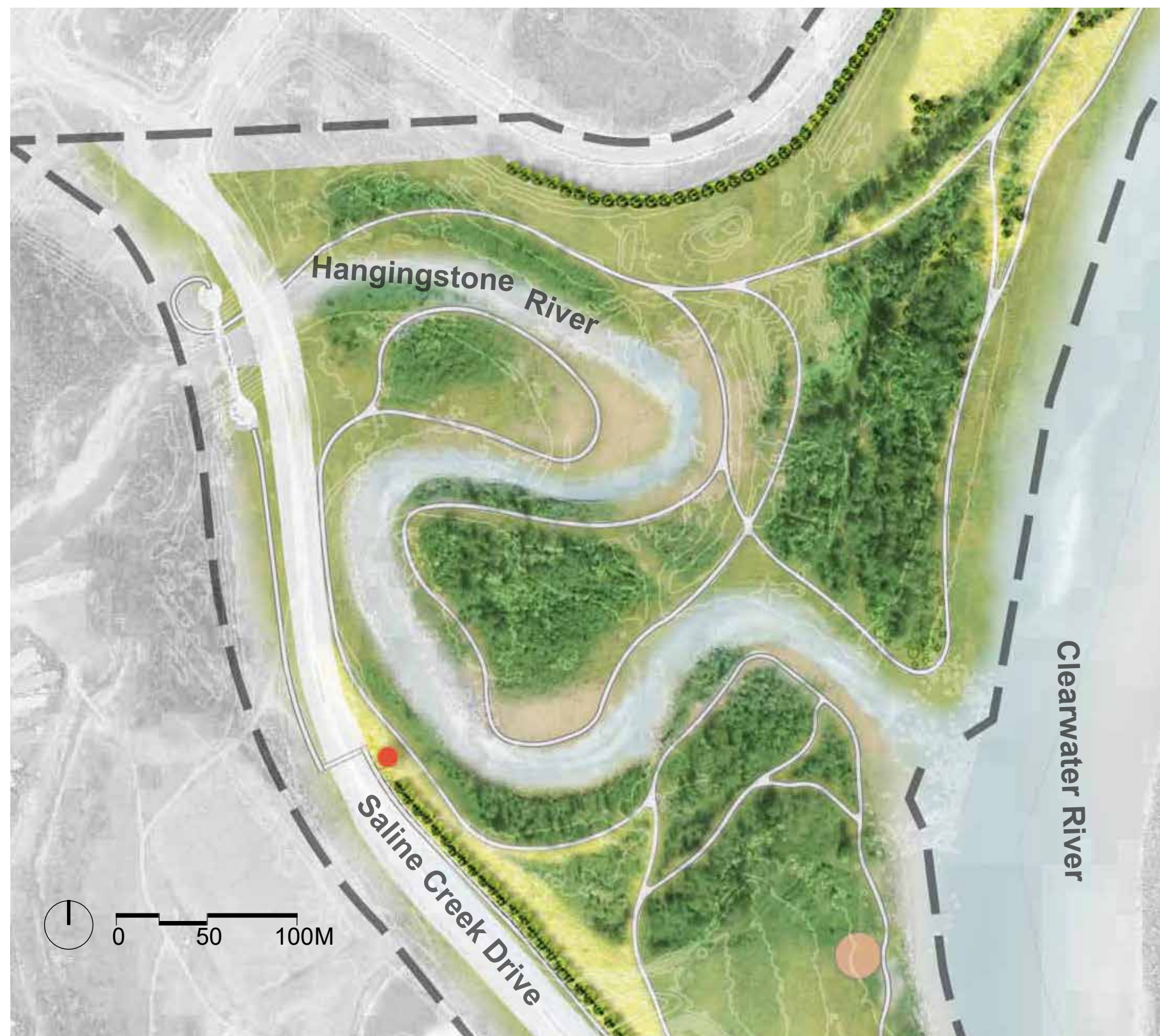


- Naturally intriguing and dynamic Hangingstone River - ecology, sandbars, exploration
- Rail connection to the water - Alberta & Great Waterways Railway (A&GWR)
- Original downtown - historic centre
- Settlers
- Connection to other regional tourism - Heritage Park, Legion Museum
- Fishing





# HANGINGSTONE BANKS



- Multi-use pathways within park connecting to Fontaine Cres and Saline Creek
- Explore opportunities for new connections over Hangingstone River taking into consideration the dynamic nature of the river Celebrate natural beauty of Hangingstone River pathways, educational signage and seating opportunities





# HANGINGSTONE BANKS



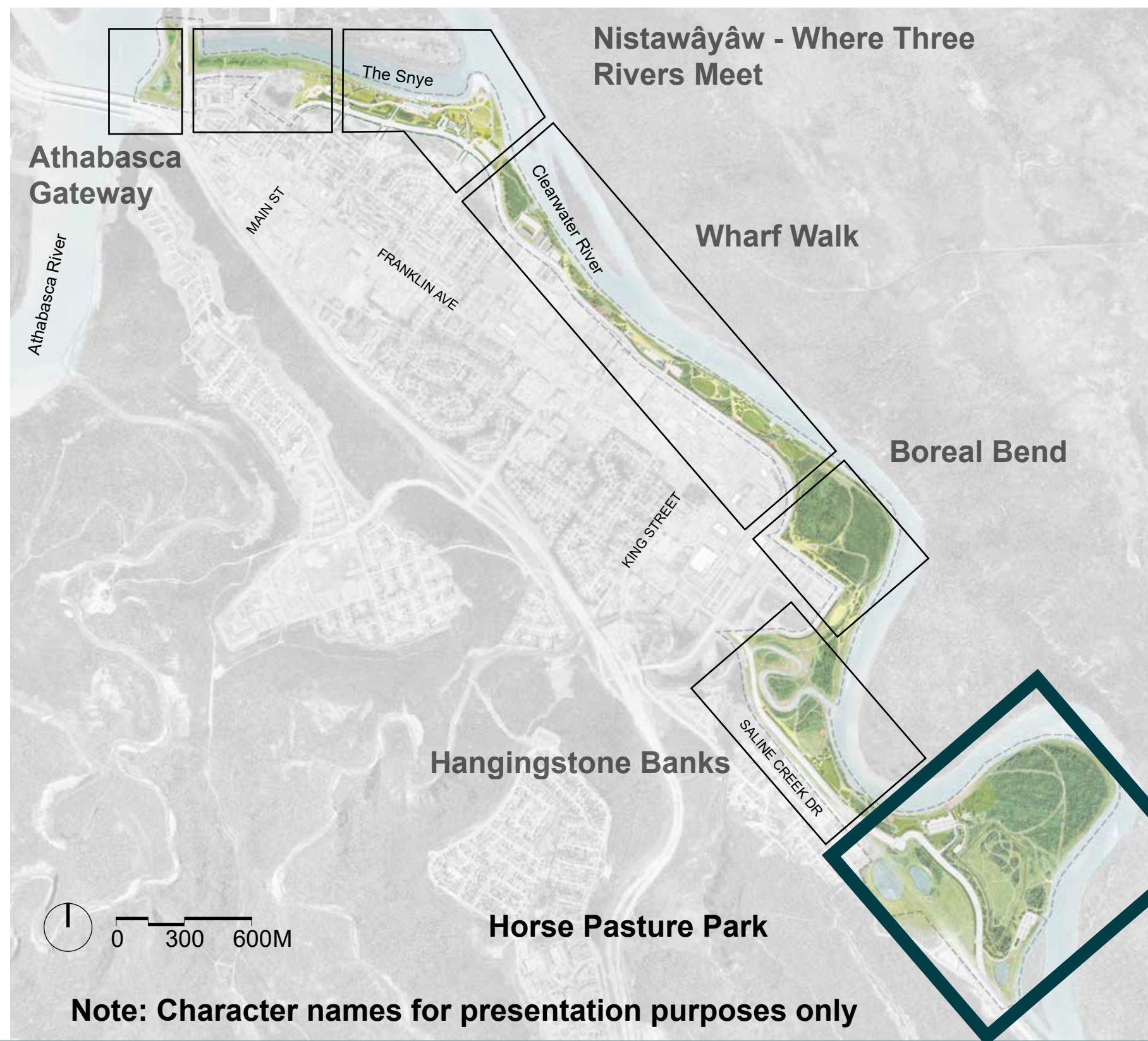
REGIONAL MUNICIPALITY  
OF WOOD BUFFALO

URBAN  
SYSTEMS

dtah



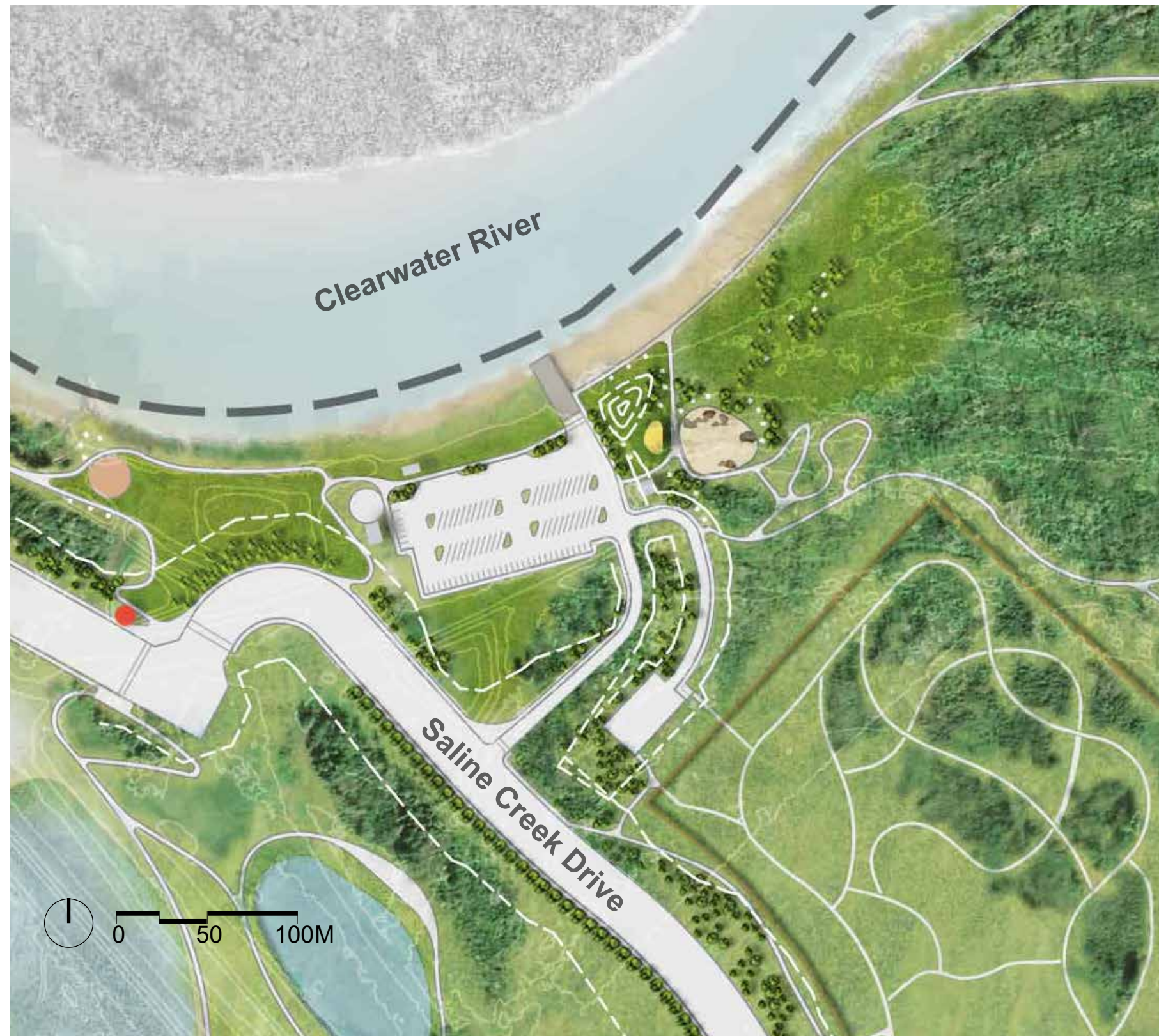
# HORSE PASTURE PARK



- Northern nature - resilience, flooding, fire, winter climate
- Natural wonder - Northern Lights viewing, boreal forest, view corridor along Clearwater Valley
- Get active! - tobogganing, snowshoeing, skiing, walking, biking, bird watching, igloo building, children's play
- Connecting to other regional tourism - Wood Buffalo National Park
- Boat launches
- Fishing
- Off leash dog park
- OHV staging



# HORSE PASTURE PARK

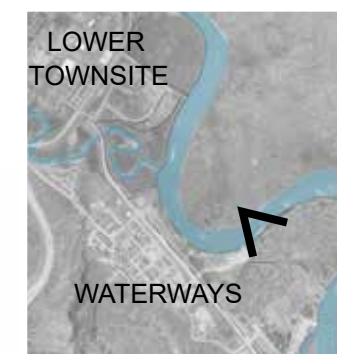


- Flexible use area by Raphael Cree boat launch and parking lot
- Natural beach along Clearwater River
- Opportunity for vendors in parking lot
- Existing restroom, shade structure and fire pit to remain
- New natural play and discovery walk
- New toboggan hill integrated with flood protection landform.
- New iconic open air shelter by flexible use lawn area
- Picnic and seating opportunities
- New multi-use trails around shoreline and minimal paths through Horse Pasture





# HORSE PASTURE - NORTHERN WONDER



vendor opportunities

toboggan hill, Northern  
Lights viewing

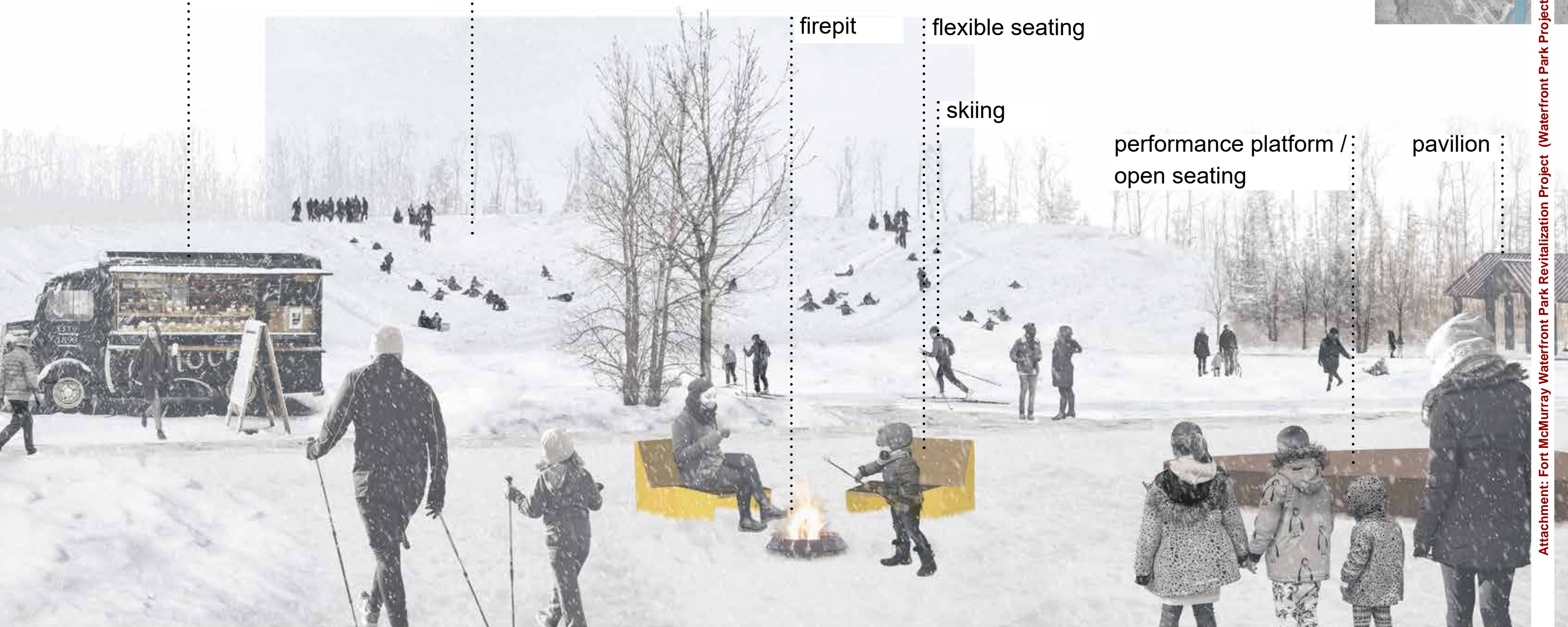
firepit

flexible seating

skiing

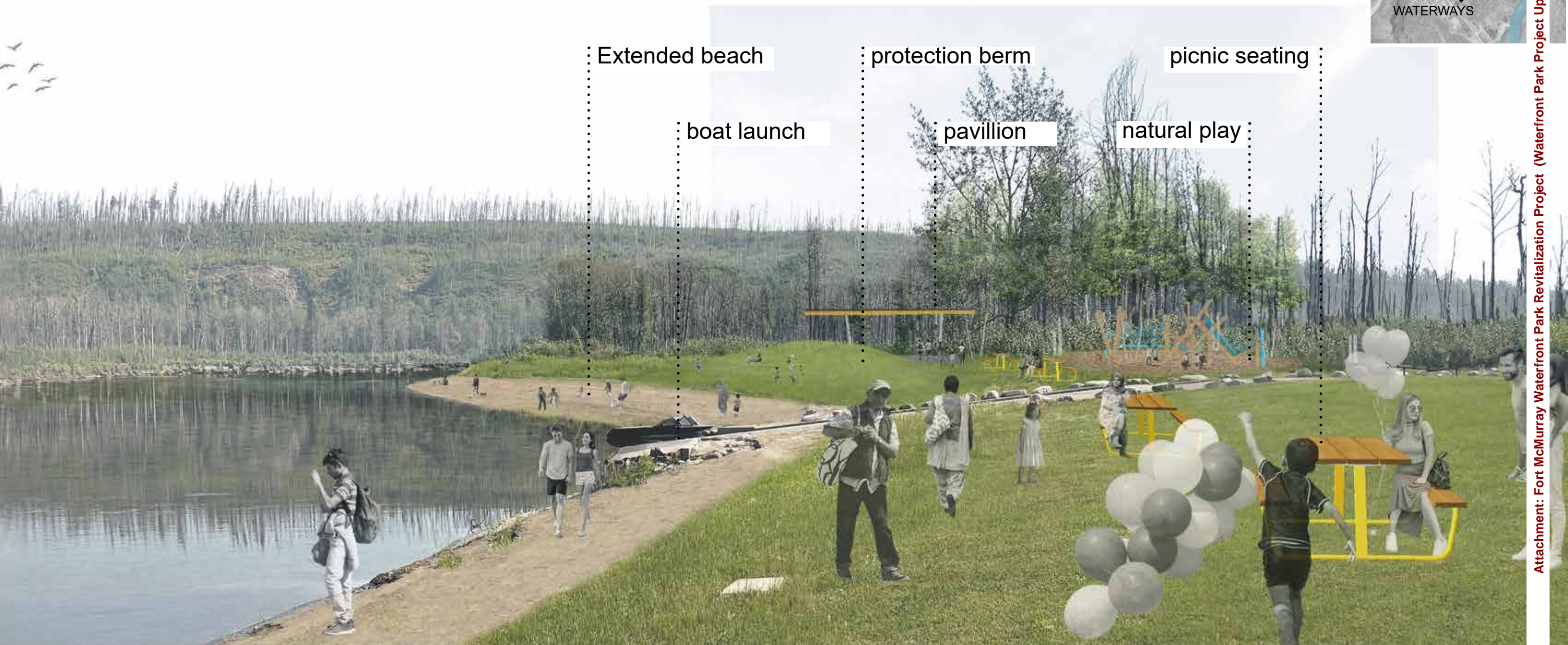
performance platform /  
open seating

pavilion





# HORSE PASTURE - BEACH





# EXCITING CHANGES COMING SOON





# WATERFRONT PARK WILL INCLUDE:

1. Indigenous Culture
2. Signage + Wayfinding including English, Cree, Dene and Michif
3. Accessible pathways with seating
4. Pedestrian crossing from Athabasca Gateway east to remainder of waterfront park
5. Connections to downtown
6. Play / Activation Opportunities
7. Discovery Moments
8. Support Flood Protection + Resilient Design
9. Off leash dog park
10. Reconfigure Tom Weber boat launch





# NEXT STEPS + DISCUSSION