



REGIONAL MUNICIPALITY
OF WOOD BUFFALO

Wood Buffalo Recovery Committee

Jubilee Centre Council Chamber
9909 Franklin Avenue, Fort McMurray

Wednesday, November 23, 2016
6:00 p.m.

Agenda

In Camera (3:00 p.m. – 5:00 p.m.)

– Advice from Officials

(in camera pursuant to Section 24 of the *Freedom of Information and Protection of Privacy Act*)

– Land Matters

(in camera pursuant to Section 24 of the *Freedom of Information and Protection of Privacy Act*)

Call To Order

Adoption of Agenda

Minutes of Previous Meetings

1. Minutes of Wood Buffalo Recovery Committee Meeting - November 9, 2016

Presentations

2. Jenelle Hart, Environmental Supervisor, Recovery Task Force re: Phase III Soil Sampling Program in the RMWB
3. Erin O'Neill, Operations Manager, Recovery Task Force re: Recovery Projects Update

New and Unfinished Business

4. Sub-Committee Reports
5. Wildfire Recovery Team Update

Adjournment

Unapproved Minutes of a Meeting of the Wood Buffalo Recovery Committee held in the Council Chamber at the Municipal Offices in Fort McMurray, Alberta, on Wednesday, November 09, 2016, commencing at 6:00 p.m.

Present: J. Bancarz, Chair
M. Farrington
S. Germain, Councillor
M. Giles
M. Hodson
K. Jenkins
K. McGrath, Councillor

Absent: K. Fleury
A. Vinni, Councillor

Administration: D. Woodworth, Recovery Team Lead
A. Rogers, Senior Legislative Officer
D. Soucy, Legislative Officer

Call To Order

Chair J. Bancarz called the meeting to order at 6:05 p.m. and sent regrets on behalf of K. Fleury and Councillor A. Vinni.

Adoption of Agenda

Moved by M. Farrington that the Agenda be adopted as presented.

CARRIED UNANIMOUSLY

Minutes of Previous Meetings

1. Minutes of Wood Buffalo Recovery Committee Meeting - October 26, 2016

Moved by M. Hodson that the minutes of the Wood Buffalo Recovery Committee meeting held on October 26, 2016 be approved as presented.

CARRIED UNANIMOUSLY

Presentations

2. Sarah Murrant, Stakeholder Engagement Manager, and Russell Baker, Communications Strategist, Recovery Task Force re: Stakeholder Engagement Update

(6:06 p.m. – 6:28 p.m.)

Sarah Murrant, Stakeholder Engagement Manager, and Russell Baker, Communications Strategist, Recovery Task Force, provided an overview and update of the stakeholder engagements held to date, as well as the upcoming engagements scheduled throughout the Municipality.

New and Unfinished Business

3. RMWB 2016 Wildfire Recovery Plan

(6:29 p.m. – 7:08 p.m.)

Jim Julien, Plans Lead, Recovery Task Force, provided a summary of the proposed RMWB 2016 Wildfire Recovery Plan, which is intended to be an operational guide to the recovery of the entire region from a post-disaster state.

Moved by M. Hodson that the RMWB 2016 Wildfire Recovery Plan be recommended to Council for approval for use as a guiding document for future budgets, resource and activity plans associated with the recovery of the entire region from a post-disaster state.

Jim Rogers, resident, spoke in support of the proposed recovery plan.

Merlin Landry, resident, spoke to matters unrelated to the recommendation before the Committee at this time.

CARRIED

For: J. Bancarz, M. Farrington, S. Germain, M. Hodson, K. Jenkins, K. McGrath,

Opposed: M. Giles

4. Sub-Committee Reports

(7:09 p.m. – 7:31 p.m.)

K. Jenkins, Chair of the Rebuild Sub Committee, and E. O'Neill, Operations Manager, Recovery Task Force, provided an update on the initiatives of the sub-committee to date.

M. Giles, Chair of the Mitigation and Economy Sub-Committees, provided an update on the initiatives of both sub-committees to date.

M. Farrington, Chair of the People Sub-Committee, provided an update on the initiatives of the sub-committee to date.

5. Wildfire Recovery Team Update

(7:31 p.m. – 7:34 p.m.)

Dana Woodworth, Recovery Team Leader, spoke to the recovery and reconstruction of the community.

Adjournment

As all scheduled business matters had been concluded, Chair J. Bancarz declared the meeting adjourned at 7:34 p.m.

Chair

Chief Legislative Officer

Phase III Soil Sampling Program in the RMWB

Presentation to the Wood Buffalo Recovery Committee

November 23, 2016

Jenelle Hart, Environment Supervisor



Agenda

- Purpose of this presentation
 - Phase I Sampling Outcomes
 - Phase II Sampling Outcomes
 - Phase III Sampling Plan

Phase I Soil Sampling

Phase I consisted of sampling ash and debris resulting from the fire to assess potential contaminants of concern in burned urban and forested areas.

Phase II Soil Sampling

Phase II consisted of an assessment of unburned soil from urban gardens, and burned soil in residential areas

- Safe to plant a garden and consume food from the garden
- Exceedances were below the human health based guideline

Phase III Soil Sampling Plan

The intent of this testing is to assess the levels of contaminants of potential concern for human and ecological health following remedial activities from the wildfire

- Testing will be completed in close proximity to the areas in phase I
- Understand the extent of soil quality impacts to human and ecological health
- Sampling will support the decisions being made for remediation or redevelopment in areas of Fort McMurray affected by the 2016 wildfire

Thank you



Recovery Projects Update

Presentation to Wood Buffalo Recovery Committee

November 23, 2016

Operations Team: Environment, Rebuild, Mitigate
Wood Buffalo Recovery Task Force



Outline

- Review of the Projects by Pillar
- Updates and Timelines
- Questions

Project Listing - Environment

- Hazardous Tree Removal
- Firebreak Drainage

Project Listing - Rebuild

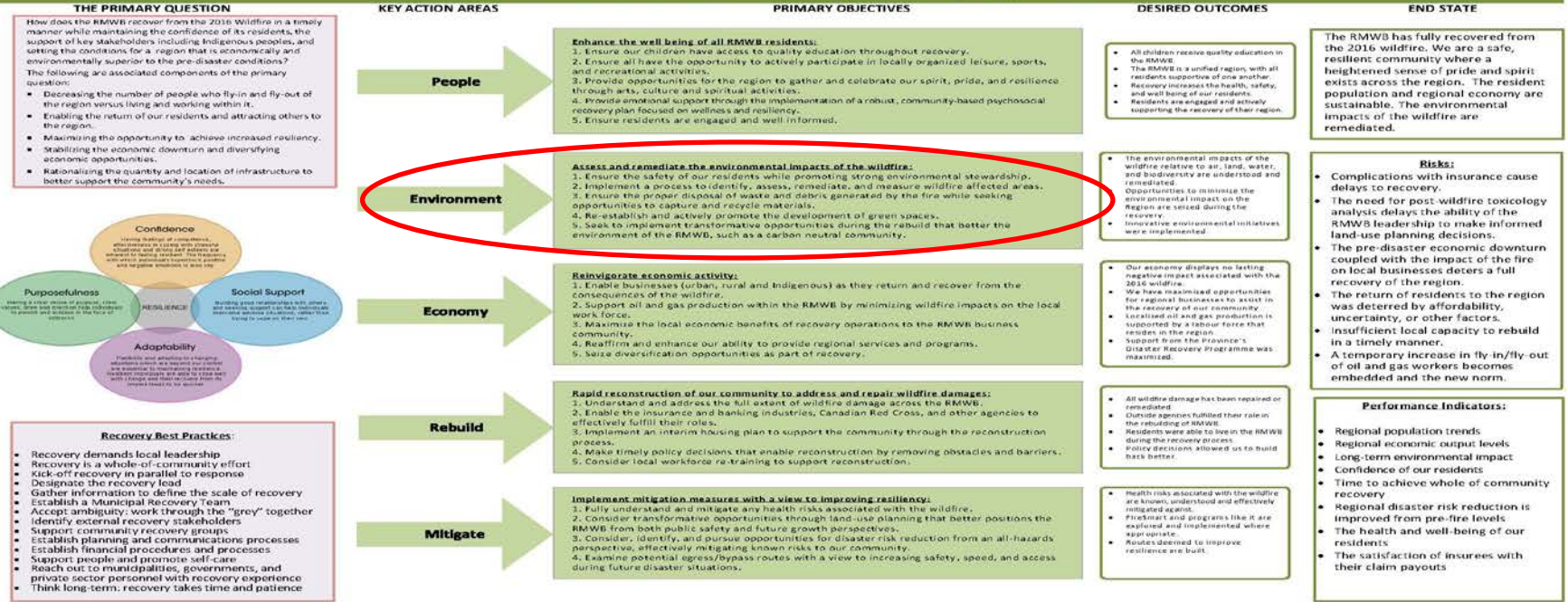
- Slope Stability – Waterways and Other Concern Areas
- Retaining Wall Repair – Cliff Avenue and Abasand Drive
- Grading Plans (Abasand, Beacon Hill, Waterways)
- Survey Pin Replacement
- Construction Access Roads

Project Listing - Mitigate

- FireSmart 2B
- Egress Roads

Recovery Campaign Plan

RMWB 2016 Wildfire Recovery – Campaign Plan



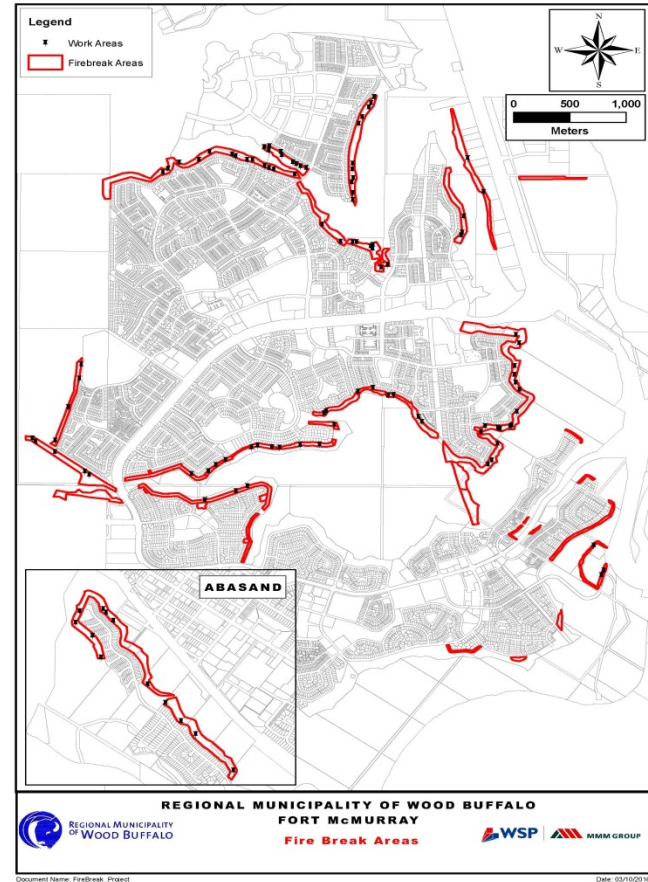
Narrative: The RMWB is recovering from a devastating wildfire that threatened the lives of our people and the very existence of our community. We suffered the loss of two residents while evaluating, thousands of homes were destroyed, as well as some public infrastructure. Many of our residents were evacuated for over one month while first responders bravely fought the fire and set the conditions for their return. We choose to move forwards, not backwards. We will rebuild once areas are safe. We will accommodate all families who want to move home as soon as possible. We will advocate for adequate community egress routes and a bypass to improve the safety and efficiency of our transportation network. Achieving these outcomes requires sound planning and strong governance. We will establish and empower a recovery task force led by Council. We will develop short and long term recovery plans that consider the needs and desires of our regional communities, industry, citizens and Indigenous peoples. We will create a roadmap to guide decision making and provide transparency and shared understanding of who decides what, when. We face a long and difficult road to recovery, but we face it together. We must work collaboratively, supporting one another, and caring for one another's mental and physical health. We see a region that is ready to bloom. We see a vibrant and tightly connected region where people want to stay and live an entire life.

Hazardous Tree Removal

- Abasand, Downtown/Lower Townsite, Beacon Hill completed
- Thickwood Trail to be complete November 20th
- Sapræe Creek

Firebreak Drainage

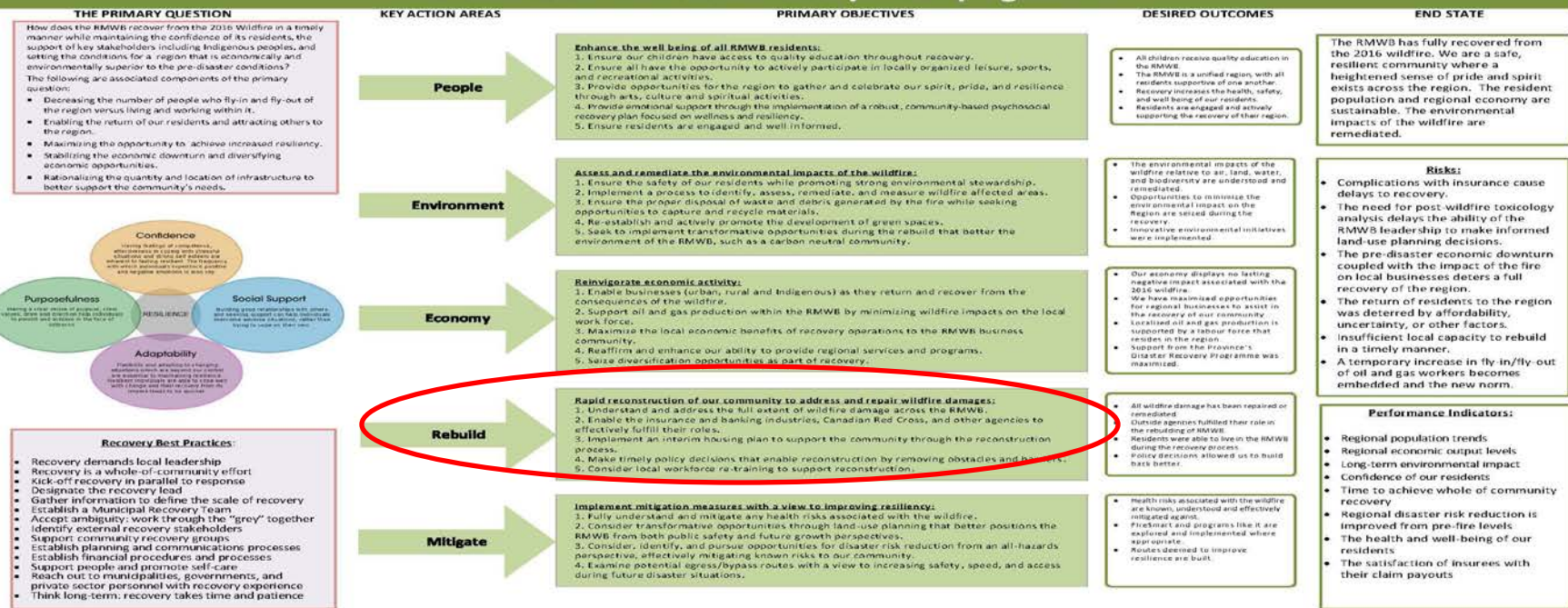
- Most areas in Anzac complete
- Discrepancies in design has slowed progress
- Total of 106 critical ponding locations
- Work to be completed mid-December



Recovery Campaign Plan

RMWB-EX Engineering Recovery Planning Team Version 2.0 September 12th, 2016

RMWB 2016 Wildfire Recovery – Campaign Plan



THE PRIMARY QUESTION

How does the RMWB recover from the 2016 Wildfire in a timely manner while maintaining the confidence of its residents, the support of key stakeholders including Indigenous peoples, and setting the conditions for a region that is economically and environmentally superior to the pre-disaster conditions?

The following are associated components of the primary question:

- Decreasing the number of people who fly-in and fly-out of the region versus living and working within it.
- Enabling the return of our residents and attracting others to the region.
- Maximizing the opportunity to achieve increased resiliency.
- Stabilizing the economic downturn and diversifying economic opportunities.
- Rationalizing the quantity and location of infrastructure to better support the community's needs.



Recovery Best Practices:

- Recovery demands local leadership
- Recovery is a whole-of-community effort
- Kick-off recovery in parallel to response
- Designate the recovery lead
- Gather information to define the scale of recovery
- Establish a Municipal Recovery Team
- Accept ambiguity; work through the "grey" together
- Identify external recovery stakeholders
- Support community recovery groups
- Establish planning and communications processes
- Establish financial procedures and processes
- Support people and promote self-care
- Reach out to municipalities, governments, and private sector personnel with recovery experience
- Think long-term: recovery takes time and patience

Narrative: The RMWB is recovering from a devastating wildfire that threatened the lives of our people and the very existence of our community. We suffered the loss of two residents while evaluating, thousands of homes were destroyed, as well as some public infrastructure. Many of our residents were evacuated for over one month while first responders bravely fought the fire and set the conditions for their return. We choose to move forwards, not backwards. We will rebuild once areas are safe. We will accommodate all families who want to move home as soon as possible. We will advocate for adequate community egress routes and a bypass to improve the safety and efficiency of our transportation network. Achieving these outcomes requires sound planning and strong governance. We will establish and empower a recovery task force led by Council. We will develop short and long term recovery plans that consider the needs and desires of our regional communities, industry, citizens and Indigenous peoples. We will create a roadmap to guide decision making and provide transparency and shared understanding of who decides what, when. We face a long and difficult road to recovery, but we face it together. We must work collaboratively, supporting one another, and caring for one another's mental and physical health. We see a region that is ready to bloom. We see a vibrant and tightly connected region where people want to stay and live an entire life.

Slope Stability

- Waterways
 - Geotechnical work to support development permits
 - Work to begin this week for approximately 6 to 8 weeks
- Other concern areas
 - Preliminary Assessment, Immediate Action and Monitoring

Retaining Wall

- Cliff Avenue, Waterways
 - Concrete poured last week
 - Additional damage noted in Northwest end
- Abasand
 - Majority of work complete. Some earthwork remains

Grading Plans

- Beacon Hill survey completed
- Abasand survey started on November 10th
- Waterways survey started on November 18th
- Project expected to be complete December 15th

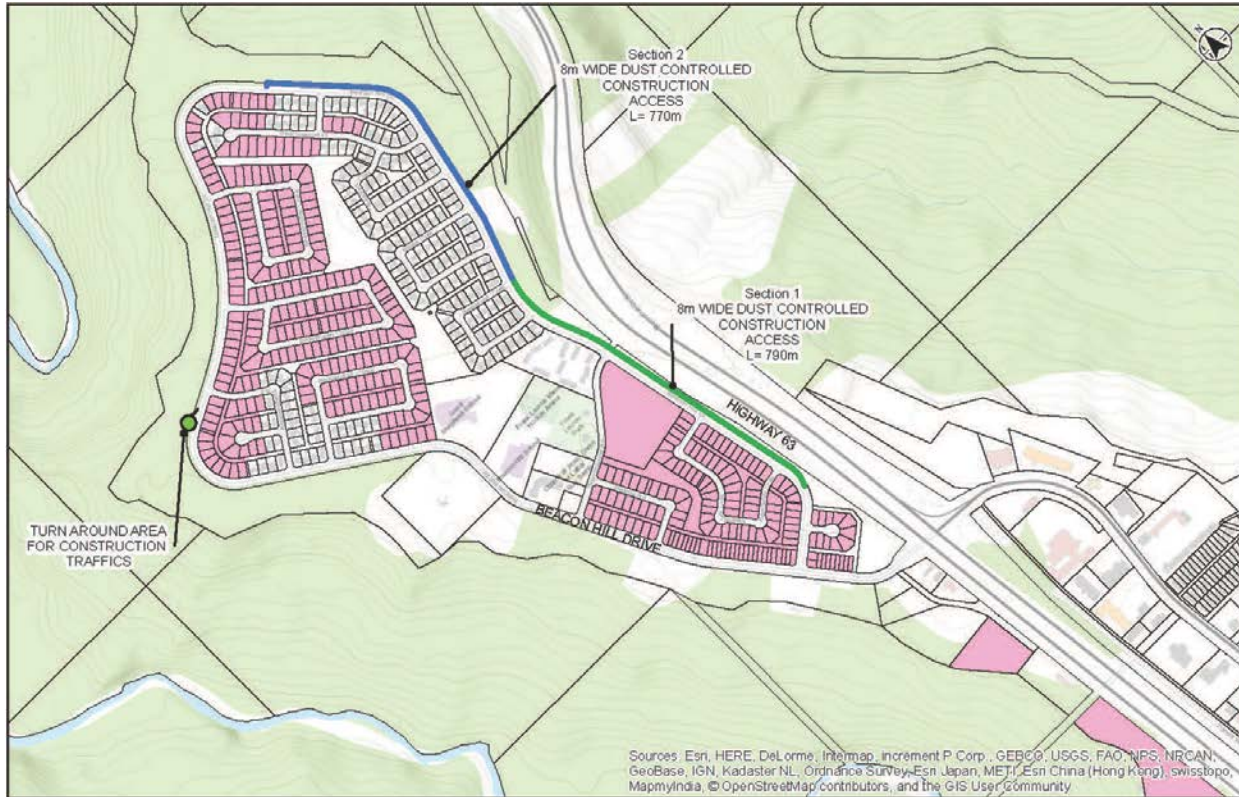
Survey Pin Replacement

- RFP required
- Input from legal being sought
- Slave Lake experience

Construction Access Roads

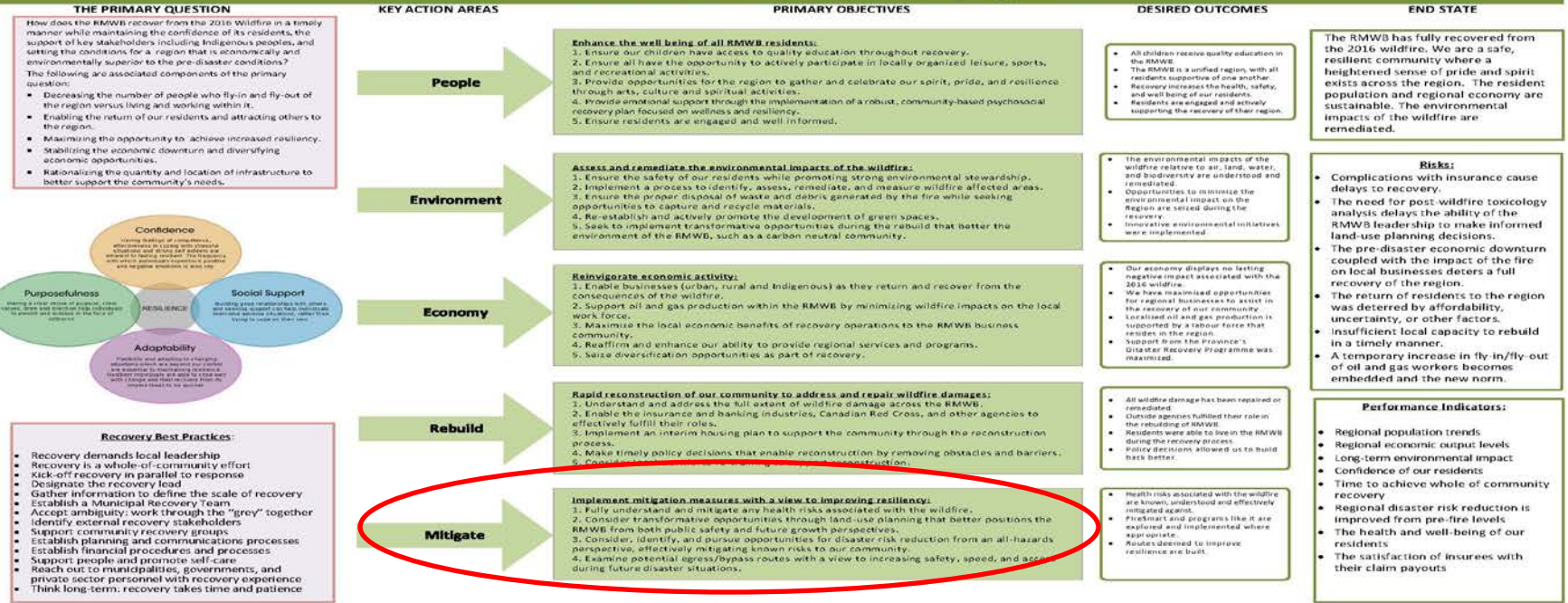


Construction Access Roads



Recovery Campaign Plan

RMWB 2016 Wildfire Recovery – Campaign Plan



Narrative: The RMWB is recovering from a devastating wildfire that threatened the lives of our people and the very existence of our community. We suffered the loss of two residents while evaluating, thousands of homes were destroyed, as well as some public infrastructure. Many of our residents were evacuated for over one month while first responders bravely fought the fire and set the conditions for their return. We choose to move forwards, not backwards. We will rebuild once areas are safe. We will accommodate all families who want to move home as soon as possible. We will advocate for adequate community egress routes and a byways to improve the safety and efficiency of our transportation network. Achieving these outcomes requires sound planning and strong governance. We will establish and empower a recovery task force led by Council. We will develop short and long term recovery plans that consider the needs and desires of our regional communities, industry, citizens and Indigenous peoples. We will create a roadmap to guide decision making and provide transparency and shared understanding of who decides what, when. We face a long and difficult road to recovery, but we face it together. We must work collaboratively, supporting one another, and caring for one another's mental and physical health. We see a region that is ready to bloom. We see a vibrant and tightly connected region where people want to stay and live an entire life.

FireSmart 2B

- Birchwood Trails
- Work was to begin however ground currently too soft to proceed with work
- Work will occur throughout the winter months

Egress Routes

- Predesign approved for 2016
- Design and Construction proposed in 2017 budget

Questions?